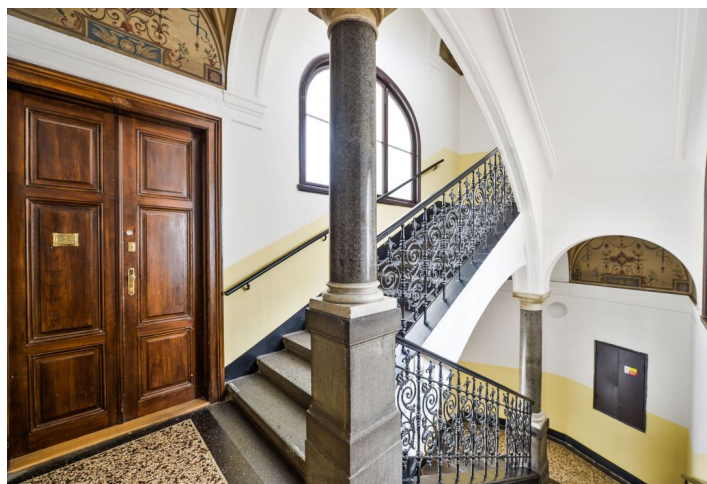




Office space

Prague 1, Nové Město, Vodičkova

Rented



**Office space****Rented**

Prague 1, Nové Město, Vodičkova

Available area	98 m ²
Cellar	-
Parking	-
PENB	G
Reference number	26759

Office space for rent on the 2nd floor of a historic building situated in the center of Prague. The building with Neo-Renaissance architecture from the 19th century was designed by the architect Josef Hlávka.

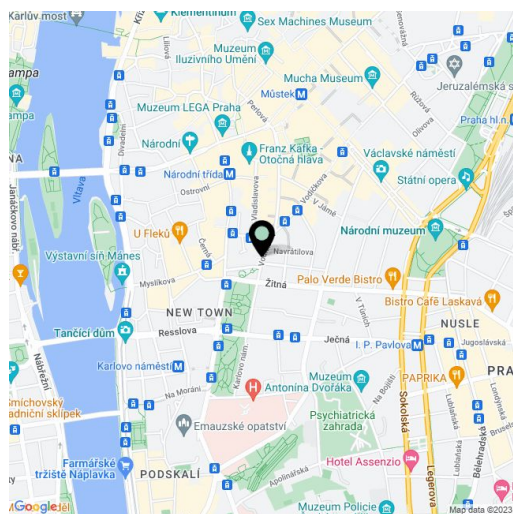
Location:

The building is situated in the business and financial center of town, close to Wenceslas Square and Franciscan Gardens. Very good access to public transportation, metro Můstek – A, B line, Muzem – C line and tram stop.

Features and Services:

- 3 premises
- Kitchen corner
- Bathroom with shower
- Wooden floors
- Openable windows
- Internet

Rental price **CZK 357/m²/month**. Rental and service charges are listed without VAT. Lessee pays no commission.





Office space

Prague 1, Nové Město, Vodičkova

Rented

