



House Four-bedroom (5+kk)

Rented

200 m², Prague 6, Střešovice, Sibeliova





House Four-bedroom (5+kk)

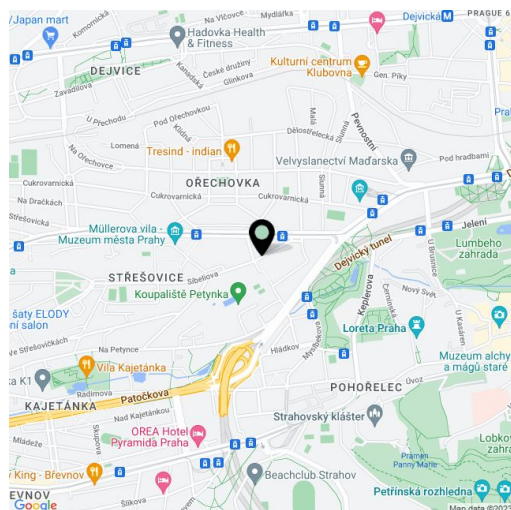
Rented200 m², Prague 6, Střešovice, Sibeliova

Plot	300 m ²
Garden	200 m ²
Parking	Garage.
Garage	Yes
Cellar	Yes
PENB	D
Reference number	26779
Available from	Immediately

Fully renovated 4-bedroom 3-bathroom villa (townhouse) from 1923, with a garden and beautiful views of the Prague Castle and Strahov Monastery. Located in the prestigious Střešovice neighborhood, in a quiet green residential area in close vicinity of the Prague Castle, convenient to the airport, and with easy access to the city center, amenities and international schools ISP, Riverside School and French School, just a few min. walk from Park Lane International School.

Ground floor: living room and a fully fitted eat-in kitchen with access to the terrace and garden, shower bathroom with toilet, entrance hall with built-in storage and original mosaic tile floor. First floor: two bedrooms, bathroom with bathtub and toilet, guest toilet. Second floor: two attic bedrooms, walk-in closet / storage room, shower bathroom with toilet. Basement floor: fitness room / playroom with sink and access to the garden, storage room, utility / laundry room with a separate access.

Preserved original details, solid wood parquet floors, tiles, built-in wardrobes and storage, original outdoor wooden blinds, gas boiler, washing machine, dryer, dishwasher, alarm system. Garage. Utilities CZK 6,000 per month.



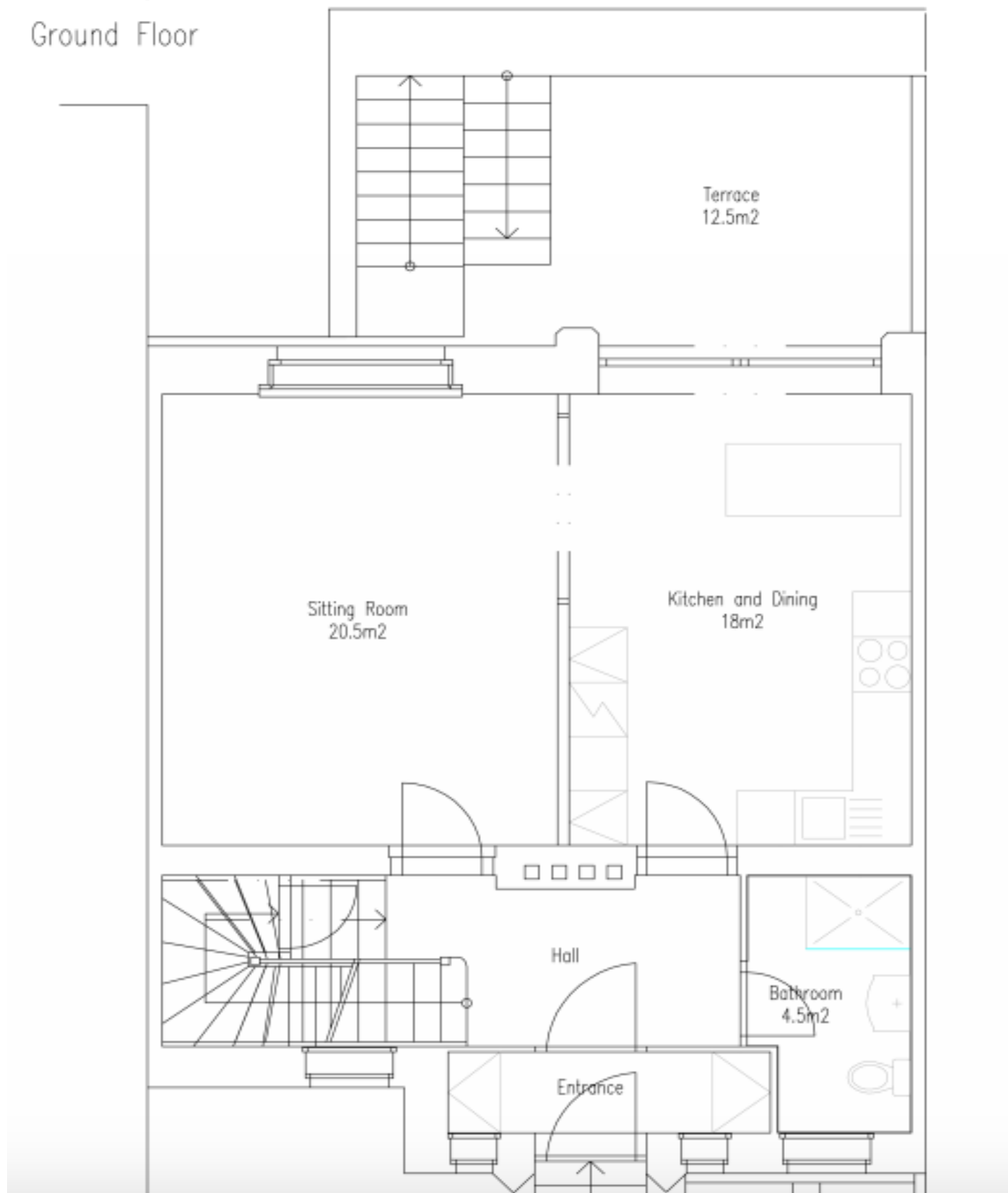


House Four-bedroom (5+kk)

Rented

200 m², Prague 6, Střešovice, Sibeliova

Ground Floor



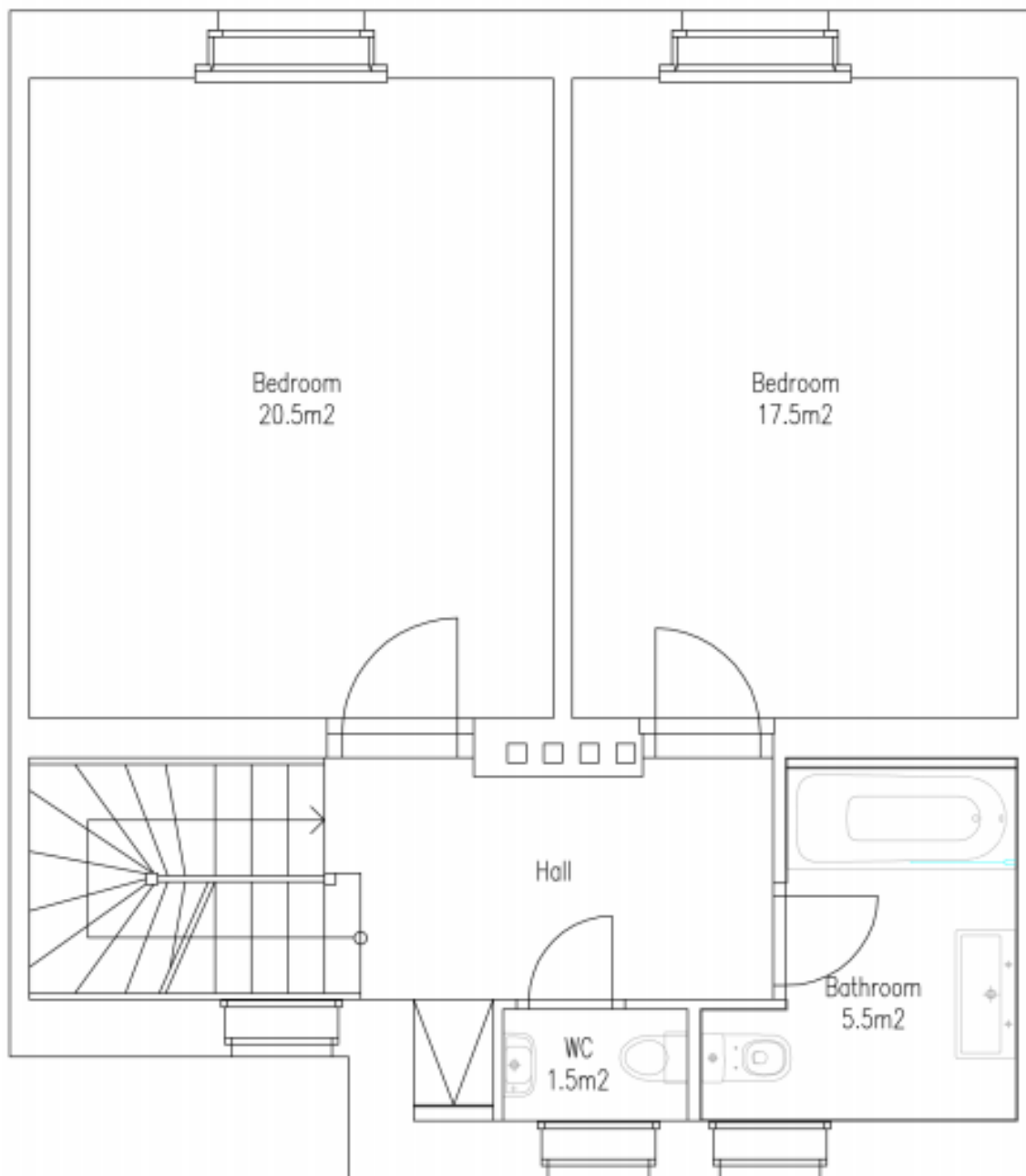


House Four-bedroom (5+kk)

Rented

200 m², Prague 6, Střešovice, Sibeliova

1st Floor



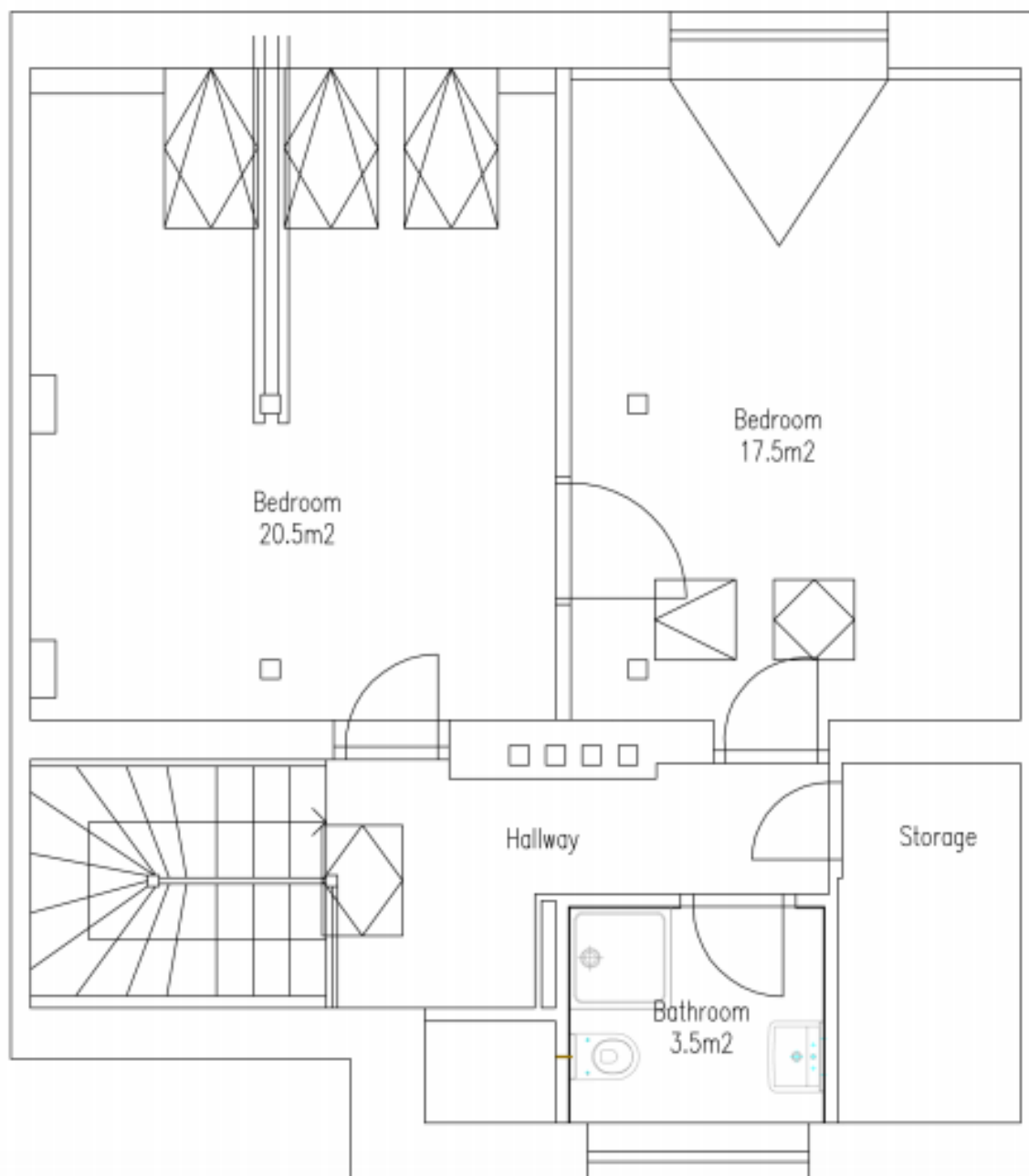


House Four-bedroom (5+kk)

Rented

200 m², Prague 6, Střešovice, Sibeliova

Attic





House Four-bedroom (5+kk)

Rented

200 m², Prague 6, Střešovice, Sibeliova

