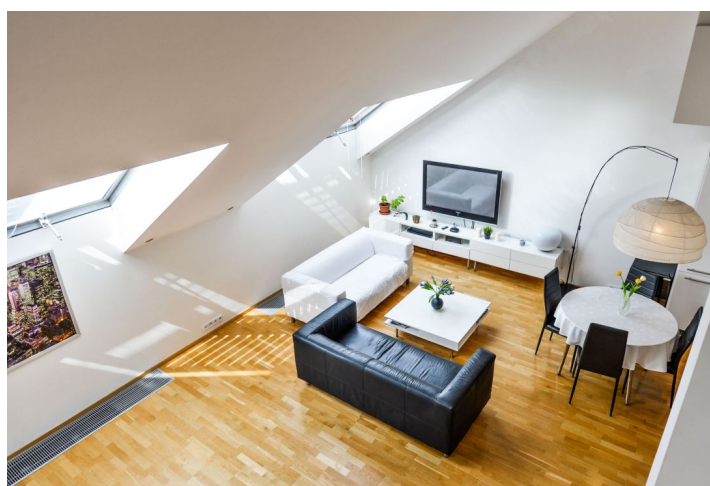




Apartment Two-bedroom (3+kk)

112 m², Prague 10, Vinohrady, Korunní

Sold





Apartment Two-bedroom (3+kk)

Sold112 m², Prague 10, Vinohrady, Korunní

Total area	112 m ²
Parking	Garage parking space for rent
Garage	Yes
Cellar	Yes
Service price	7 200 CZK monthly
PENB	G
Reference number	26815

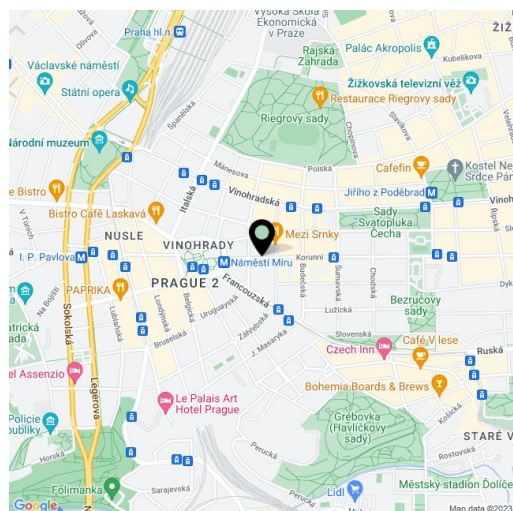
This duplex apartment on the 3rd and 4th floors of the modern residential project Korunní Dvůr by architect David Chisholma from CMC Architects is located in the sought-after district of Prague 2 - Vinohrady with excellent access to the city center.

On the lower floor the bright apartment offers a spacious, interestingly designed **living room with a kitchenette and a dining area**. High ceilings and skylights provide plenty of light and give the room a feeling of greater and more airy space. The hallway has a separate toilet. The staircase from the living room enters the private part of the apartment, consisting of a main **bathroom and two bedrooms**, one with a study area.

The apartment is equipped with **wooden parquets and aluminum windows**, shaded with **interior blinds**. Heating is provided with **floor convectors**. The kitchen is fully equipped. The residence has a **24-hour reception with security**. The apartment has a **cellar**, parking space in garages can be rented.

The residence is situated on the border of **apartment buildings and the villa residential area** with several architecturally important houses. There are many shops, stylish cafes and restaurants, a brewery, playground, pharmacy, **kindergartens and basic schools**. A **tram stop** is right in front of the house, the tram takes three minutes to the **Flora metro station (line A)** or **ten minutes to the center**.

Interior 112 m², cellar 3,33 m².



* Area of the unit according to the Civil Code. The area consists of the sum total area of the entire unit bounded by perimeter walls.