



Apartment Two-bedroom (3+kk)

Rented

83 m², Praha 5, Smíchov, Ke Klimentce





Apartment Two-bedroom (3+kk)

Rented

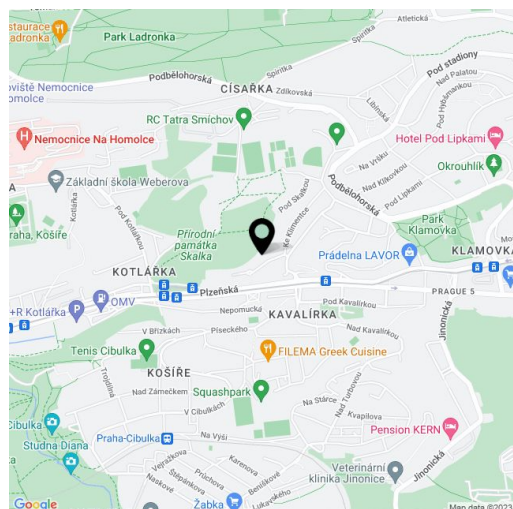
83 m², Praha 5, Smíchov, Ke Klimentce

Total area	90 m ²
Floor area*	83 m ²
Loggia	7 m ²
Parking	Garage parking.
Garage	Yes
Cellar	Yes
PENB	G
Reference number	26865
Available from	Immediately

Benefiting from a 7 m² enclosed balcony and far reaching green views, this is a 2-bedroom flat on the second floor of a modern building with a shared garden, camera system, security and underground parking. Located in a quiet and green Prague 5 residential neighborhood, just a few minute drive to the Anděl commercial and entertainment center and metro station, just a minute walk to trams at Plzeňská street, and convenient to the French School and the popular Ladronka Park.

The interior includes two separate bedrooms, living room with a fully fitted open kitchen, dining area and access to the enclosed balcony, bathroom with bath, a separate toilet, and entrance hall with lots of built-in wardrobes and storage.

Wooden floors, tiles, carpet, security entry door, built-in wardrobes in one bedroom, blinds, washer, dishwasher, microwave oven, TV, video entry phone, cellar. One garage parking space included. Deposit for common building charges, water and heating CZK 3250/month. Electricity is billed separately (current deposit CZK 1050/month). Interior: 83 m². Enclosed balcony: 7 m². Available from October 2017.



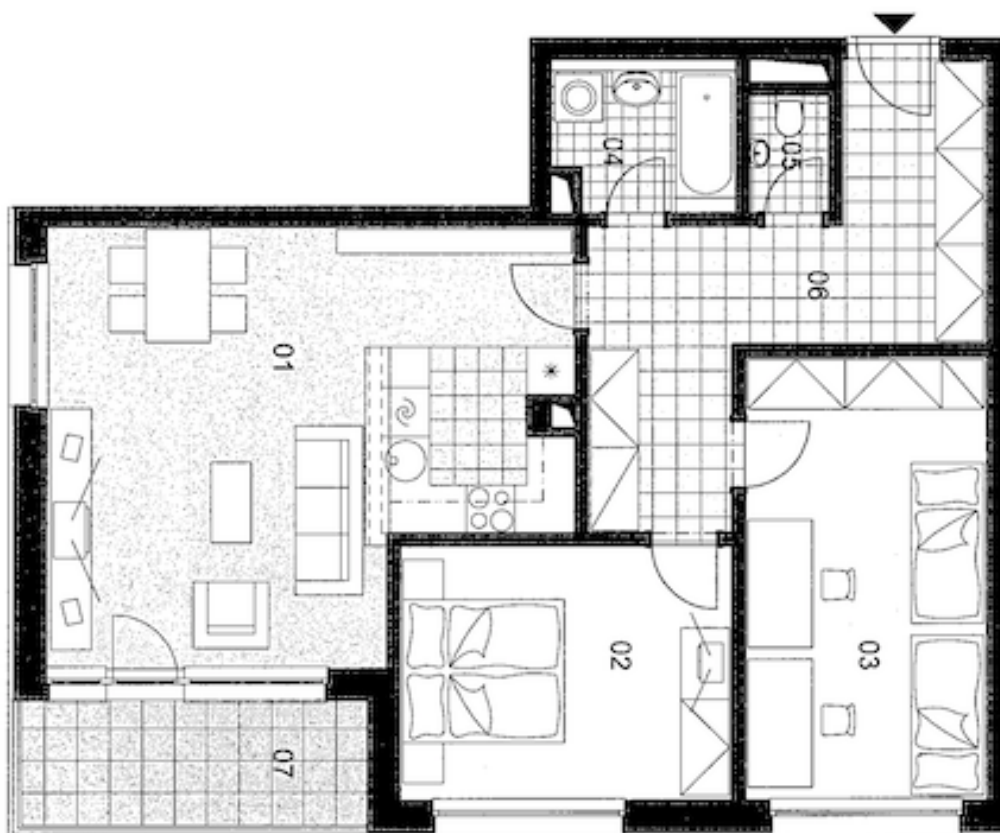
* Area of the unit according to the Civil Code. The area consists of the sum total area of the entire unit bounded by perimeter walls.



Apartment Two-bedroom (3+kk)

83 m², Praha 5, Smíchov, Ke Klimentce

Rented



UŽITNÁ PLOCHA / NET AREA		m ²
01	OBÝVACÍ/POKOUJ LIVING ROOM	31,8
02	LOŽNICE BEDROOM	13,2
03	POKOUJ ROOM	16,6
04	KOUPELNA BATHROOM	4,3
05	WC TOILET	1,5
06	CHODBA CORRIDOR	16,1
VNITŘNÍ PLOCHA / INT. TOTAL AREA		83,5
07	LODŽIE INT. BALCONY	6,7
PLOCHA CELKEM / TOTAL AREA		90,2

