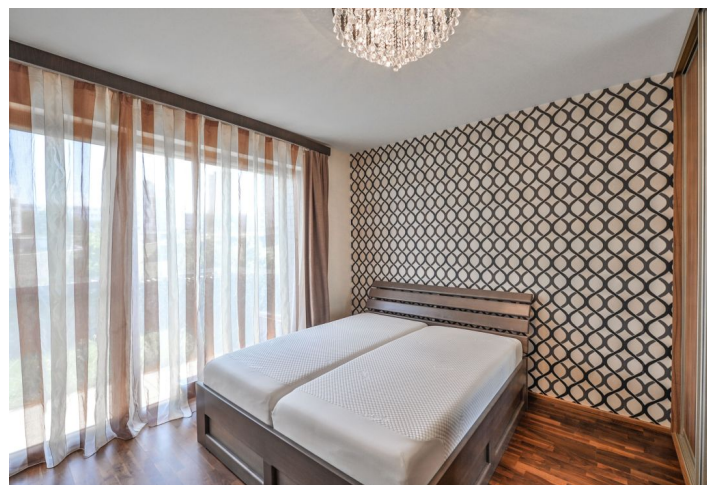
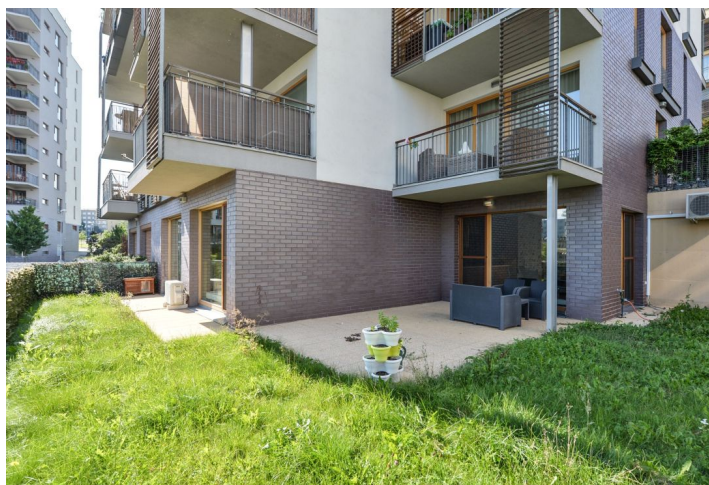




## Apartment Two-bedroom (3+kk)

Rented

97 m<sup>2</sup>, Prague 9, Hrdlořezy, V Třešňovce





## Apartment Two-bedroom (3+kk)

**Rented**97 m<sup>2</sup>, Prague 9, Hrdlořezy, V Třešňovce

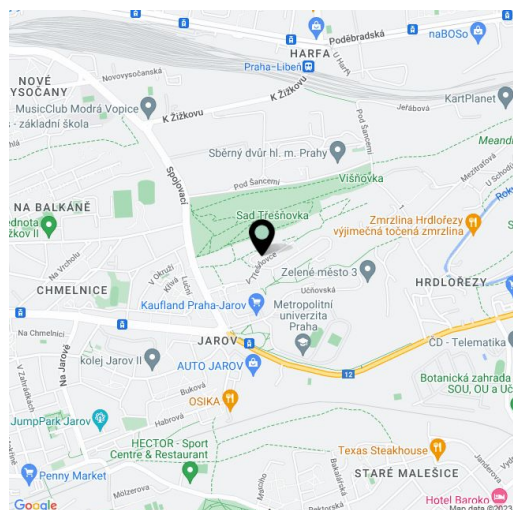
Total area	97 m <sup>2</sup>
Garden	150 m <sup>2</sup>
Parking	Two garage parking spaces.
Garage	Yes
Cellar	Yes
PENB	G
Reference number	26866
Available from	Immediately

Boasting a 120 m<sup>2</sup> garden, this furnished fully air-conditioned 2-bedroom flat is situated on the first floor of the Zelené město residential project, with camera system, underground parking and children's playgrounds. Green location on the border of Hrdlořezy, Prague 9 and Žižkov, Prague 3, with tram and bus connections to the city center or metro - nearest metro station Palmovka. Very good amenities in close vicinity.

The interior includes two separate bedrooms with built-in wardrobes, living room with a fully fitted open kitchen and dining area, bathroom with bath and toilet, utility room, guest toilet, and entrance hall with built-in wardrobes. The garden is accessible from all main rooms.

Wooden floors, tiles, security entry door, French windows, roller blinds, projector and screen, washer, dryer, Miele kitchen appliances, induction cooktop, dishwasher, microwave oven, alarm, garden furniture, children's climbing frame and slide in the garden, 4 m<sup>2</sup> cellar, pram and bike storage, lift. Two garage parking spaces included. Common building charges CZK 6236 per month. Deposit for electricity CZK 1000/month.

Interior 97 m<sup>2</sup>, garden 150 m<sup>2</sup>. Ideal for families with children, barrier free access.



\* Area of the unit according to the Civil Code. The area consists of the sum total area of the entire unit bounded by perimeter walls.