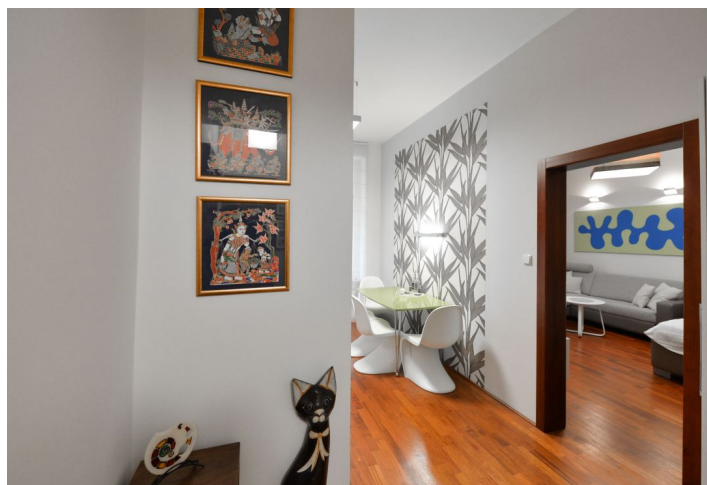




## Apartment Studio (1+1)

41 m<sup>2</sup>, Prague 10, Vršovice, Kodaňská

Rented





## Apartment Studio (1+1)

41 m<sup>2</sup>, Prague 10, Vršovice, Kodaňská

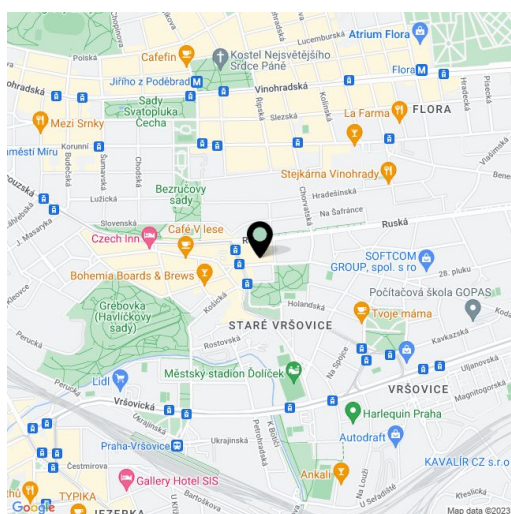
Rented

Total area	41 m <sup>2</sup>
Parking	-
Cellar	-
PENB	F
Reference number	26881
Available from	Immediately

Fully furnished and refurbished studio apartment situated on the first floor of a traditional residential building that went through complete renovation using the finest materials and finishes. Location with full amenities within easy reach, quick access to the city center and a bus stop across the street, a five min. ride to Náměstí Míru metro station.

The interior features a fully fitted eat-in kitchen, living room / bedroom, shower bathroom with toilet and bidet shower, and an open entry hall.

High ceilings, large windows, solid wood parquet floors, heated tiles in the bathroom, security entry door, gas heating, TV, WiFi, video entry phone, fold out sofa, washing machine, dishwasher, fan and microwave ovens, kitchenware. Mid term rental possible (min. six months). Deposit for common building charges and water CZK 420 per month for one person. Heating and electricity are billed separately.



\* Area of the unit according to the Civil Code. The area consists of the sum total area of the entire unit bounded by perimeter walls.