



House Four-bedroom (5+kk)

Rented

113 m², Prague 5, Radotín, Otěšinská





House Four-bedroom (5+kk)

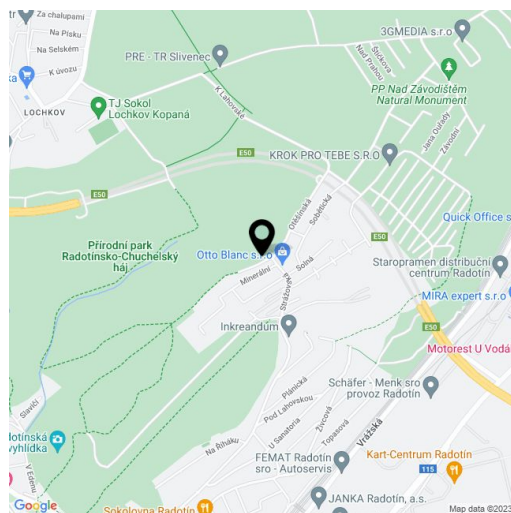
Rented113 m², Prague 5, Radotín, Otěšinská

Plot	279 m ²
Foot print	76 m ²
Garden	203 m ²
Parking	Two parking spaces available.
Cellar	-
PENB	B
Reference number	26910
Available from	Immediately

Semidetached house with lovely views of the green surroundings located on a quiet street in a peaceful residential area in Radotín, on the edge of Slavičí Valley natural park, 15 minutes from Smíchovské nádraží train station. Radotín has complete amenities including a nursery and primary school, supermarket, restaurants and cinema. Easy access to a golf course, equestrian club and river spa. Bus stop in front of the building.

The ground floor features living room with a fully fitted open kitchen and access to the terrace and garden, guest bedroom / office, guest toilet, laundry / boiler room, pantry, and entrance hall with built-in wardrobes. The first floor offers three bedrooms with built-in wardrobes, en-suite bathroom (walk-in shower, toilet), and family bathroom (bath, toilet).

Laminated and tile floors, security entry door, gas boiler, built-in wardrobes, blinds, washer, dryer, dishwasher, microwave oven, alarm, garden shed. Two parking spaces in front of the house available. Deposit for utilities CZK 4000 per month.

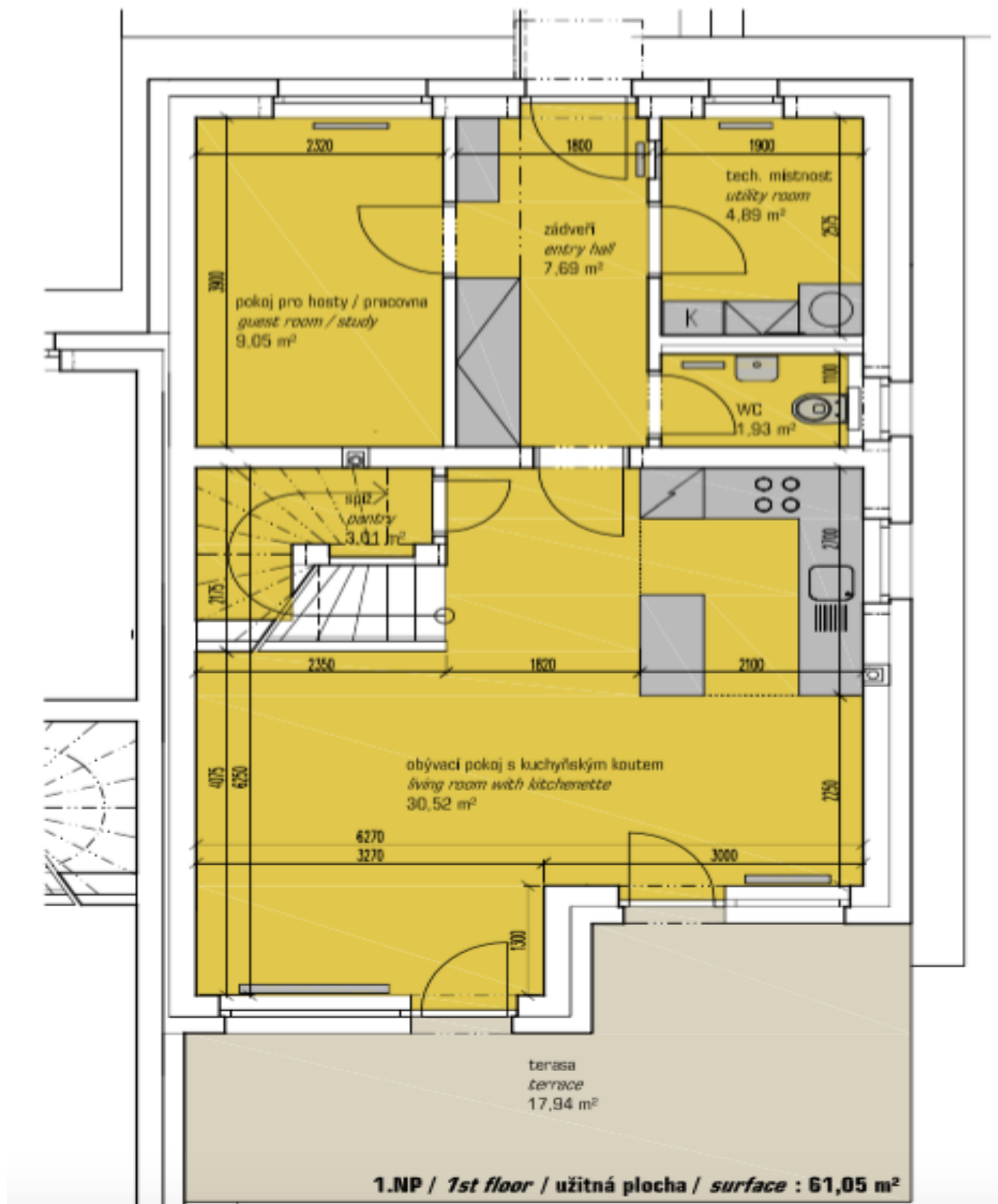


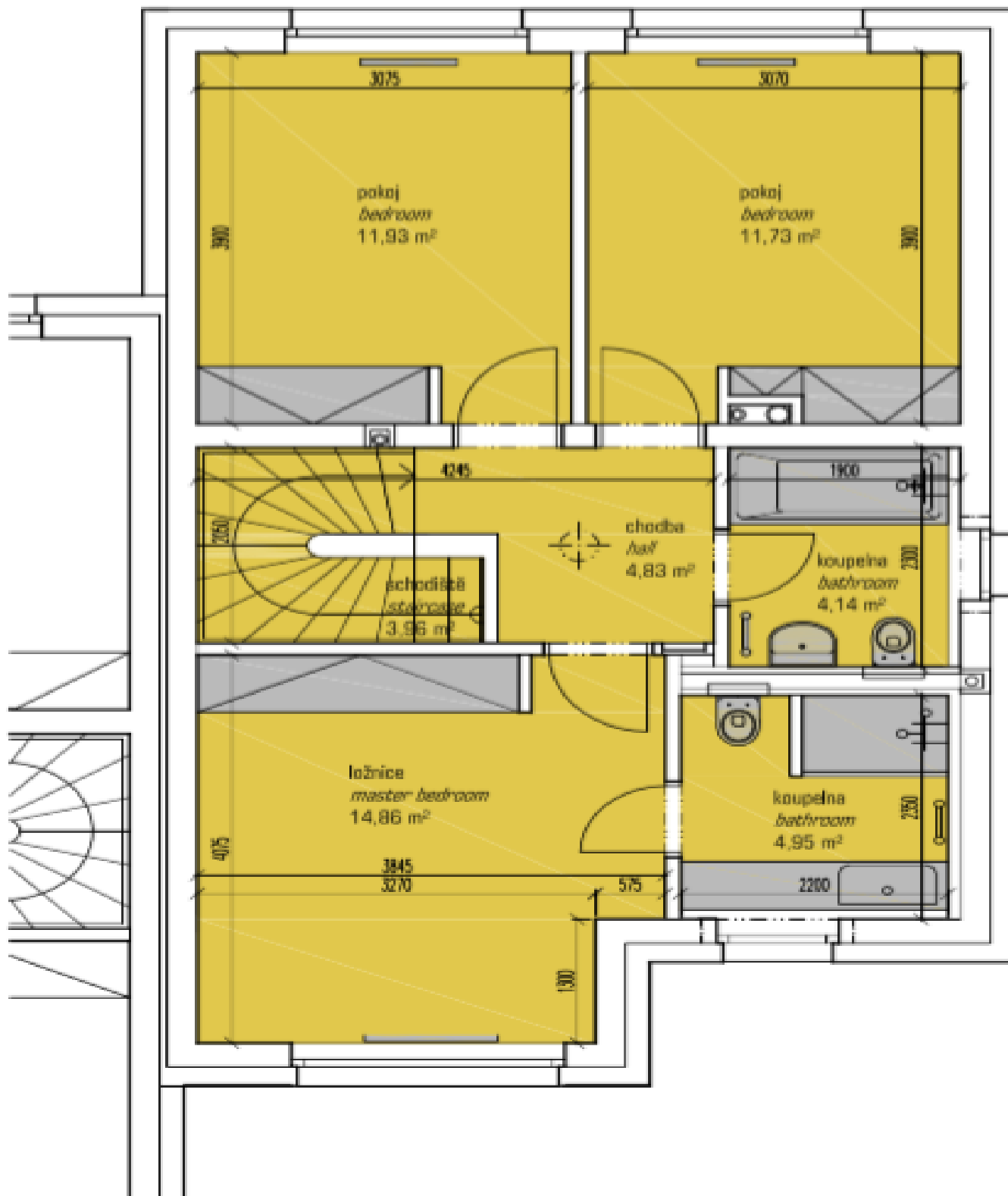


House Four-bedroom (5+kk)

Rented

113 m², Prague 5, Radotín, Otěšinská



**House Four-bedroom (5+kk)****Rented**113 m², Prague 5, Radotín, Otěšinská

DŮM B / HOUSE B / celková užitná plocha / total surface : 113,49 m²
2.NP / 2nd floor / užitná plocha / surface : 52,44 m²