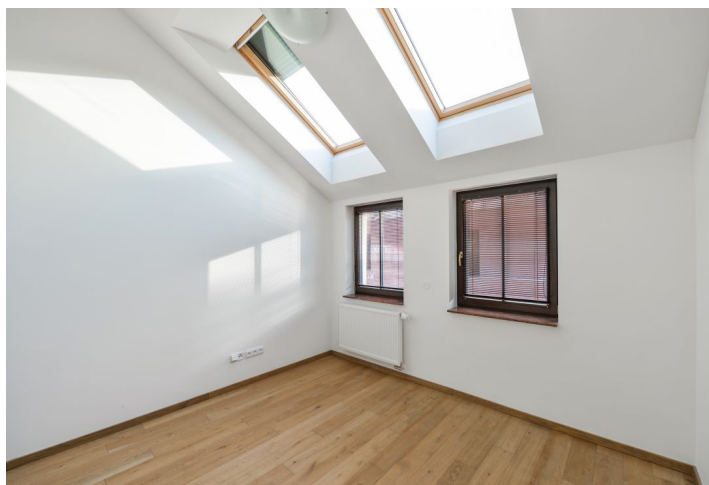
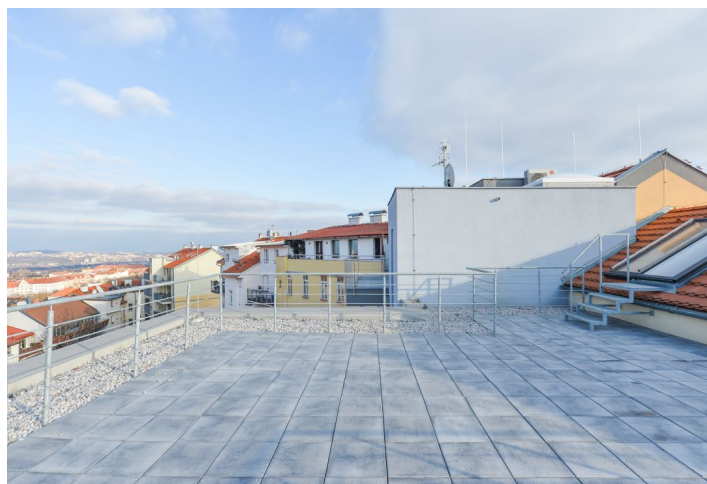




Apartment Two-bedroom (3+kk)

Rented

103 m², Prague 6, Břevnov, Za Strahovem





Apartment Two-bedroom (3+kk)

Rented

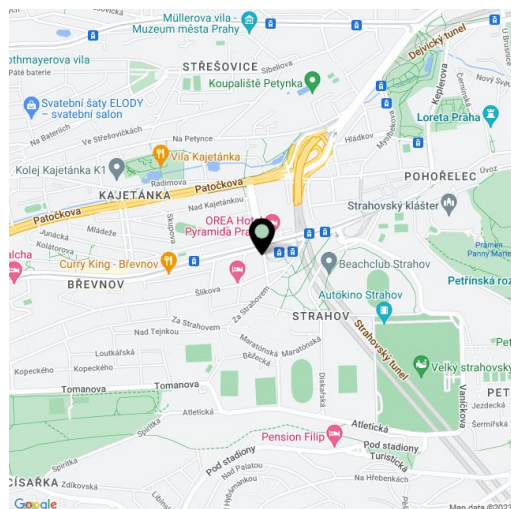
103 m², Prague 6, Břevnov, Za Strahovem

Total area	189 m ²
Floor area*	103 m ²
Terrace	86 m ²
Parking	Two garage parking spaces.
Garage	Yes
Cellar	Yes
PENB	B
Reference number	26919
Available from	Immediately

Brand new contemporary apartment in the Břevnov Residence offering a terrace and beautiful views of Prague. This air-conditioned 2-bedroom 2-bathroom split-level attic apartment is on the third floor of a recently constructed residential building with a shared courtyard garden, a lift and underground parking. Located in a quiet street in an attractive Břevnov area next to a park, in close vicinity of the Prague Castle, within easy reach of the Strahov stadium, the Petřín Hill and the popular Ladronka Park. Full amenities are available in close vicinity, plus quick access to the city center - bus and tram connections to metro, line A.

The lower floor features a living room with a fully fitted open plan kitchen and a dining area, a bedroom with built-in wardrobes, a **walk-in closet**, a bathroom (bathtub with a shower screen, toilet), a utility room, and an entrance hall with built-in wardrobes. The upper level offers a **gallery** with **terrace** access, a second bedroom, and a bathroom (walk-in shower, toilet).

Air-conditioning, hardwood floors, large format tiles, French windows, security entry door, blinds, optic cable, dishwasher, induction cooktop, microwave oven, **basement storage unit**, automatic garage door. **Two garage parking spaces are included in the rent.** Common building charges, water and deposit for energy approx. CZK 5,800/month.



* Area of the unit according to the Civil Code. The area consists of the sum total area of the entire unit bounded by perimeter walls.