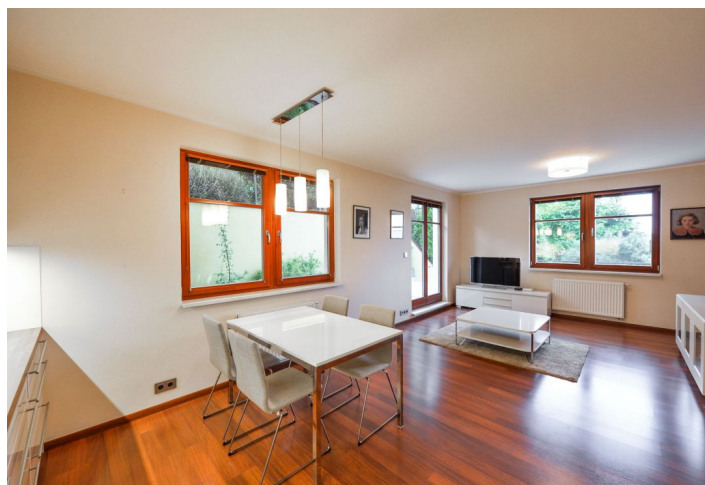




Apartment Two-bedroom (3+kk)

Rented

71 m², Prague 6, Vokovice, Na Krutci





Apartment Two-bedroom (3+kk)

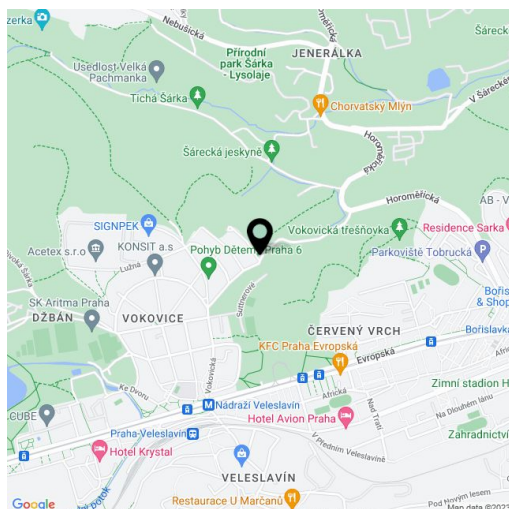
Rented71 m², Prague 6, Vokovice, Na Krutci

Total area	126 m ²
Floor area*	71 m ²
Terrace	55 m ²
Parking	Garage parking.
Garage	Yes
Cellar	-
PENB	G
Reference number	26925
Available from	Immediately

Highly benefiting from a 55 m² terrace and beautiful views of the adjacent Divoká Šárka protected natural preserve, this is a partly furnished 2-bedroom flat on the first floor of a residential building with underground parking. Convenient to the airport and international schools in Prague 6, with quick connections to the city center. Full amenities in the area, five min. to Nádraží Vevešlavín tram stops and metro station.

The flat includes living room with a fully fitted open kitchen and terrace access, master bedroom, second bedroom / study, bathroom with bathtub, a separate toilet, and entrance hall with built-in wardrobes.

Wooden floors, carpet, tiles, security entry door, gas boiler, blinds, induction cooktop, dishwasher, fan and microwave ovens, TV, alarm, video entry phone, garden furniture. One underground garage parking space included. Common building charges and utilities around CZK 4500 per month. Interior 71 m², terrace 55 m².



* Area of the unit according to the Civil Code. The area consists of the sum total area of the entire unit bounded by perimeter walls.