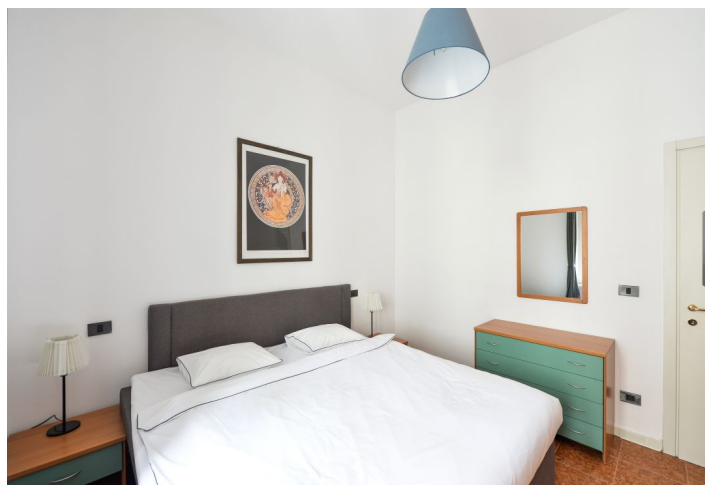




## Apartment One-bedroom (2+kk)

Rented

38 m<sup>2</sup>, Prague 1, Nové Město, Olivova





## Apartment One-bedroom (2+kk)

Rented

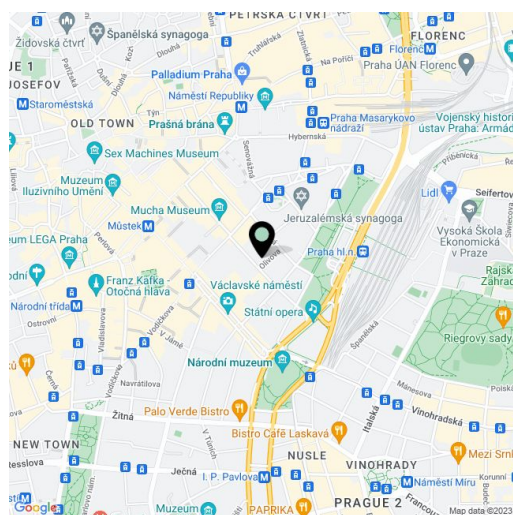
38 m<sup>2</sup>, Prague 1, Nové Město, Olivova

Total area	38 m <sup>2</sup>
Parking	Garage parking can be arranged.
Garage	Yes
Cellar	-
PENB	G
Reference number	26961
Available from	Immediately

Fully furnished 1-bedroom apartment on the second floor of a well kept renovated apartment building with a lift. Situated on a quiet street just a few steps from the Main Train Station and a few blocks from Wenceslas Square with all three Prague metro lines. Great central location for people who enjoy city life and the convenience of being able to walk to just about everywhere.

The interior includes a living room with a fully fitted open plan kitchen, one bedroom, a corridor with a large wardrobe, and a bathroom with a walk-in shower, a bidet and a toilet.

Tiles, high ceilings, large windows, security entry door, washing machine, microwave oven, basic kitchenware, Nespresso coffee maker, TV, satellite connection, WiFi. Parking can be arranged in a nearby underground garage at an additional fee. Monthly deposit for service charges and utilities: CZK 3100.



\* Area of the unit according to the Civil Code. The area consists of the sum total area of the entire unit bounded by perimeter walls.