



House Four-bedroom (5+kk)

Rented

190 m², Prague 6, Dejvice, V Šáreckém údolí





House Four-bedroom (5+kk)

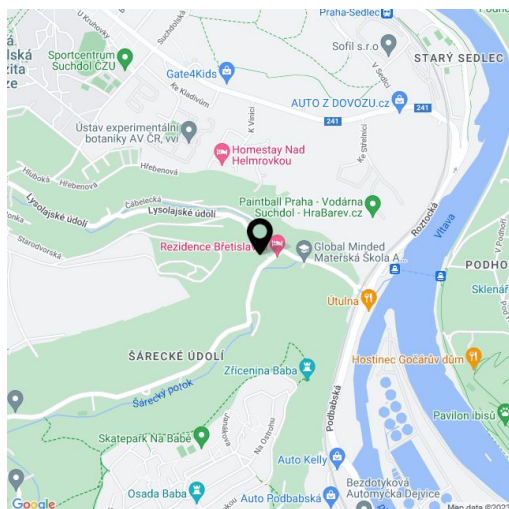
Rented190 m², Prague 6, Dejvice, V Šáreckém údolí

Plot	186 m ²
Foot print	83 m ²
Garden	103 m ²
Parking	Double garage.
Garage	Yes
Cellar	Yes
PENB	A
Reference number	27000
Available from	Immediately

High standard partly furnished 4-bedroom 3-bathroom low energy townhouse with a sauna - part of the TOP RESIDENCE project with interiors designed by the Olgoj Chorchoj studio, situated in the charming Šárecké Valley surrounded by green hills and peaceful countryside. Good connection to the city center, the airport and international schools in Prague 6, convenient to Dejvická metro station with full amenities in the area. Steps to Global Concept Montessori School, five min. to the ISP School.

The ground floor features living room with a fireplace, dining area, a fully fitted open kitchen and access to the terrace and garden, guest bedroom, guest bathroom (walk-in shower, toilet), and entry hall with built-in wardrobes. The first floor offers three bedrooms - master bedroom with a large walk-in closet and en-suite bathroom (bath, bidet, toilet), family bathroom (walk-in shower, toilet), and a balcony accessible from two bedrooms. The basement floor includes a wellness room with a **sauna** and garden access, laundry room, utility room, and garage access.

Green views, high standard materials and finishes, wooden floors, tiles, large format French windows, outdoor blinds, recuperation, De Dietrich kitchen appliances, TV, video entry phone, alarm, central vacuum cleaner. Can be fully furnished at a higher rent. Double garage, automatic garage gate, **24-hour security, social club and a children's playground**. There is a number of cycling and jogging paths in the area. Utilities CZK 13,000 per month. Available from July 2021.





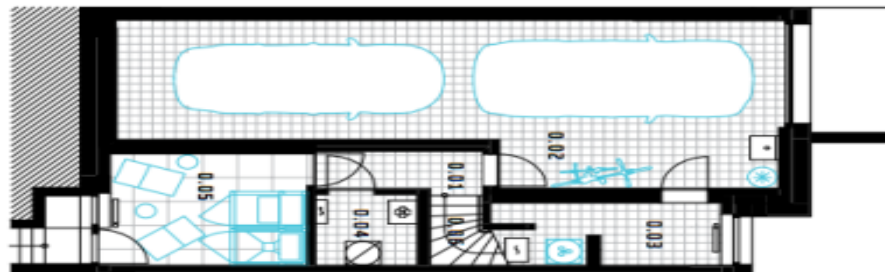
House Four-bedroom (5+kk)

Rented

190 m², Prague 6, Dejvice, V Šáreckém údolí

SUTERĚN | UNDERGROUND

m²



1. PATRO | 1ST FLOOR

m²



2. PATRO | 2ND FLOOR

m²

