



Office space

Sold

Prague 6, Bubeneč, Jaselská





Office space

Prague 6, Bubeneč, Jaselská

Sold

Available area	1 450 m ²
Min. area	1 450 m ²
Tenant consumption	—
Parking	Parkování na pozemku
Parking service charges	—
Parking ratio	—
Certification	—
PENB	G
Reference number	27006

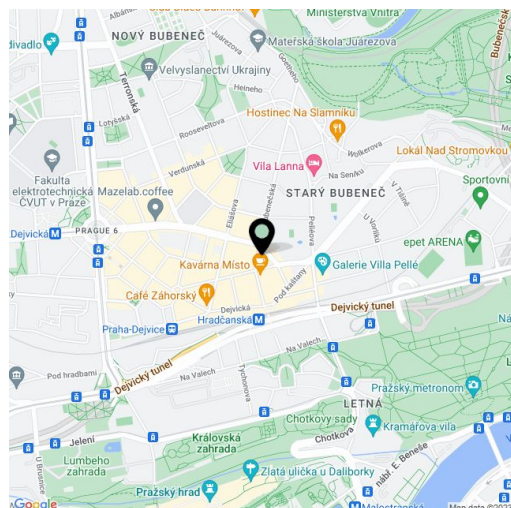
Administrative villa, boasting among other things a garden and parking, has undergone a sensitive reconstruction. Set in the prestigious residential and diplomatic district of Bubeneč, the grand villa dominates the street it is set on. It is suitable for use as a corporate seat or for renting for commercial or residential purposes.

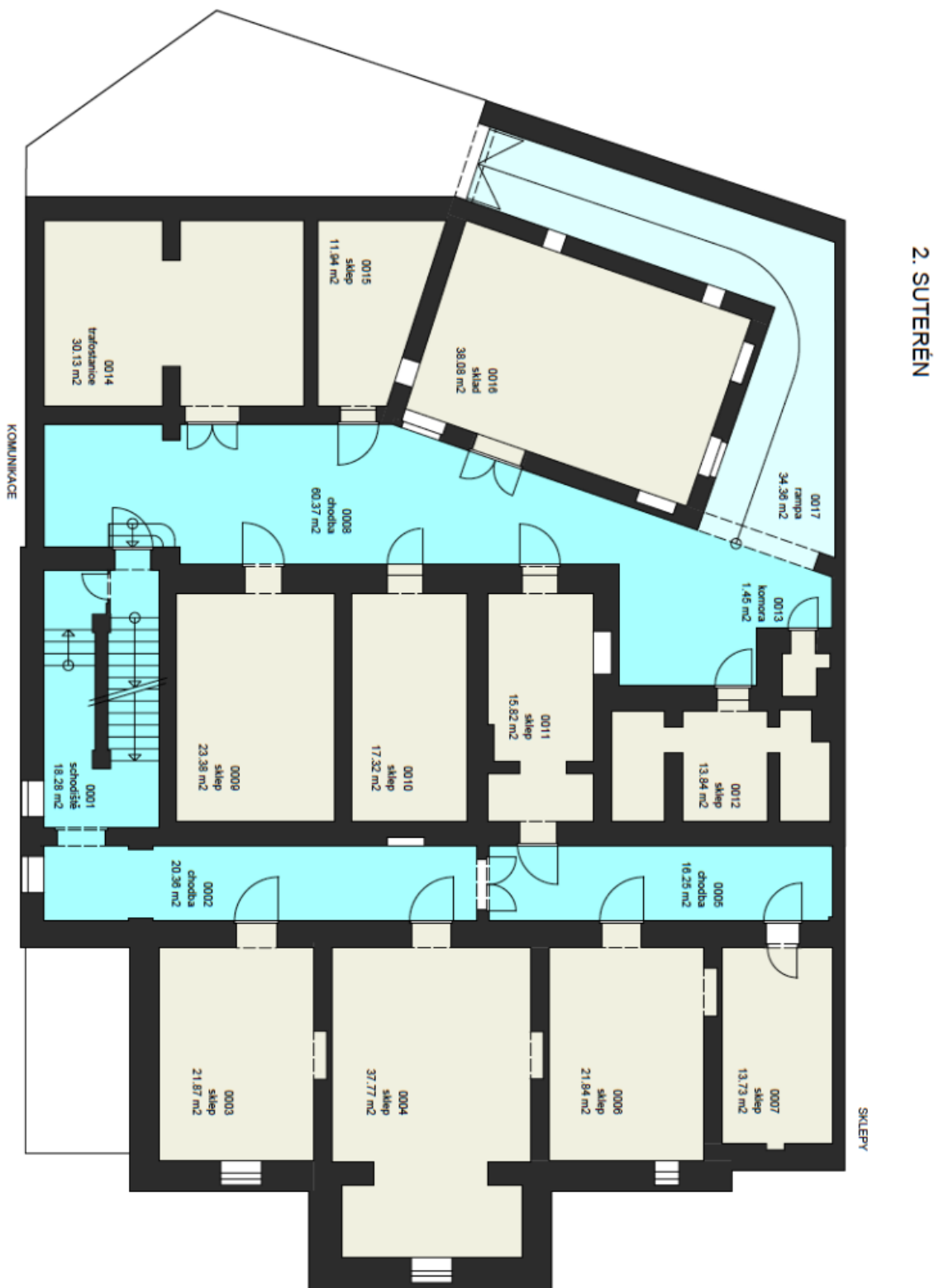
The majority of the villa is currently used as **office space** with all facilities and amenities including air conditioning. The villa features **wooden and ceramic tile flooring and original wooden windows & doors (all repaired)**. **Furthermore, there is a garden-facing terrace.**

The villa's spacious attic is suitable for conversion into another office space. There is cellar space under the entire villa; the **cellars have high ceilings** and can be used for operating needs after a reconstruction. **9 parking spaces** are available on the property's paved courtyard, while other parking spaces can be created as well. The villa has a restored decorative facade and a **magnificent garden** with tall trees, which optically and acoustically separate the villa from the bustling street. The garden also features a **pergola, complete with seating.**

The villa is highly visible due to its impressive appearance and location. It has **excellent accessibility via public transport or by car** - the Blanka tunnel is within easy reach. Within a comfortable walking distance (150 meters) one can find the **Hradčanská metro, tram and bus stop**. **The surrounding area has many restaurants serving a variety of world cuisines (Italian, Japanese, Mediterranean,, etc.), several stylish bistros, and classy cafes.** ATMs, shops, drug stores - all within walking distance. The location is also popular due to its close proximity to **Stromovka and Letenské sady – Prague's most popular parks, perfect for sports and leisure.**

Total area 1450 m², built-up area 573 m², plot 986 m², garden 388 m².





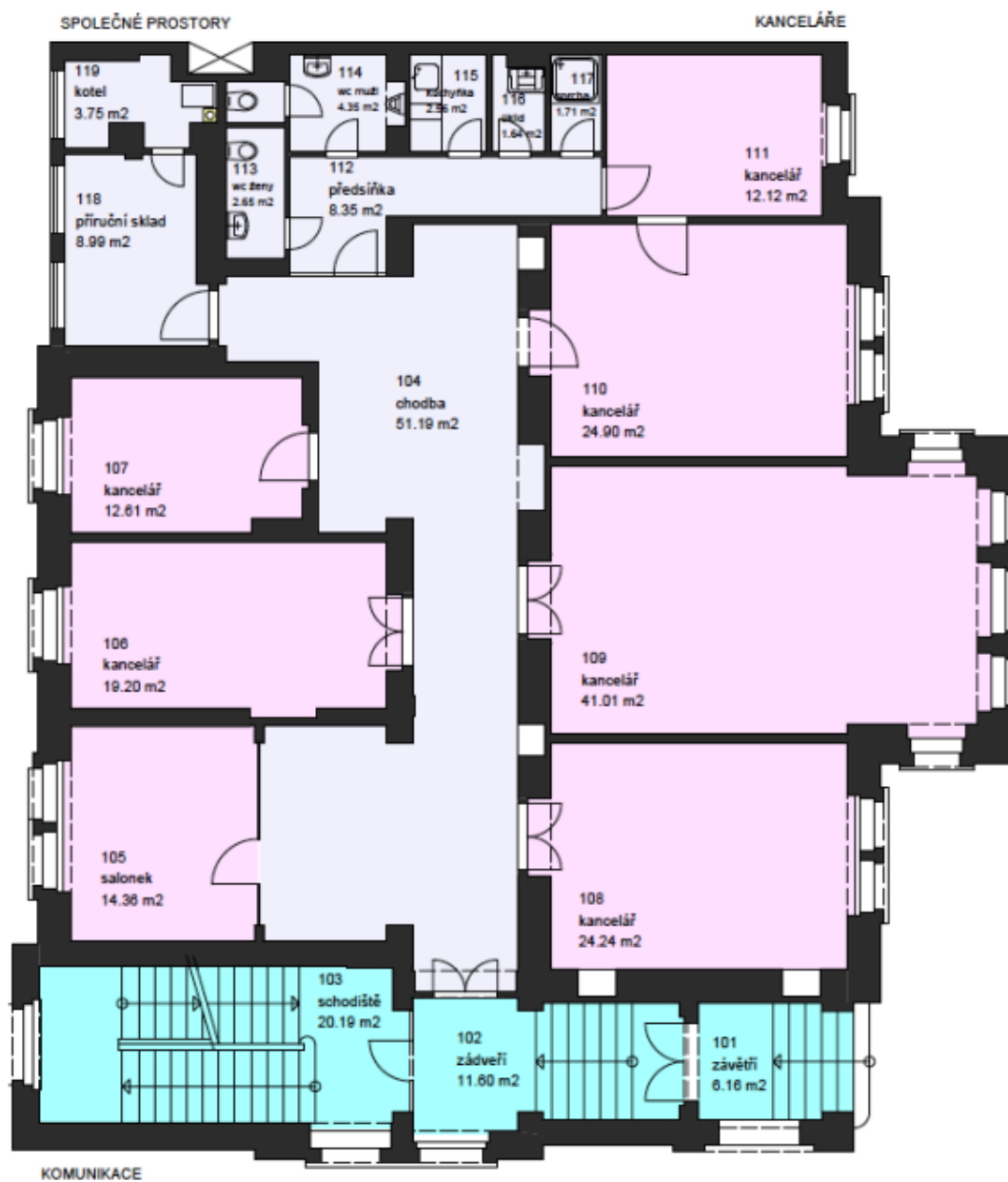


1. SUTERÉN





PŘÍZEMÍ (1. NP)





**Office space**

Prague 6, Bubeneč, Jaselská

Sold