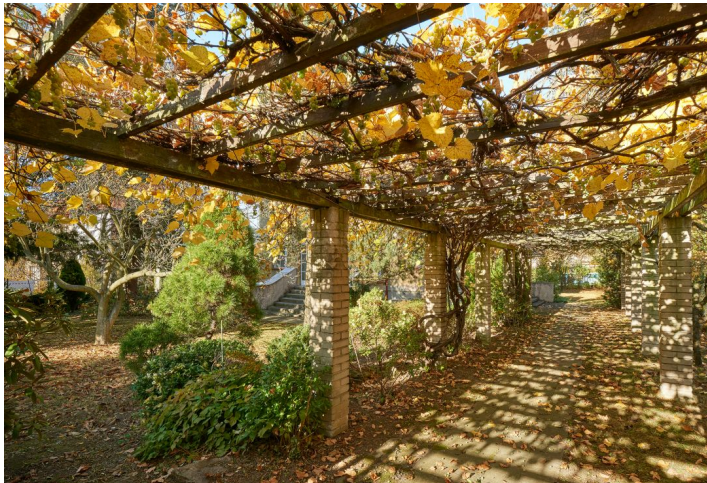




House Six-bedroom (7+kk)

Sold

332 m², Prague 6, Břevnov, Zeyerova alej





House Six-bedroom (7+kk)

Sold332 m², Prague 6, Břevnov, Zeyerova alej

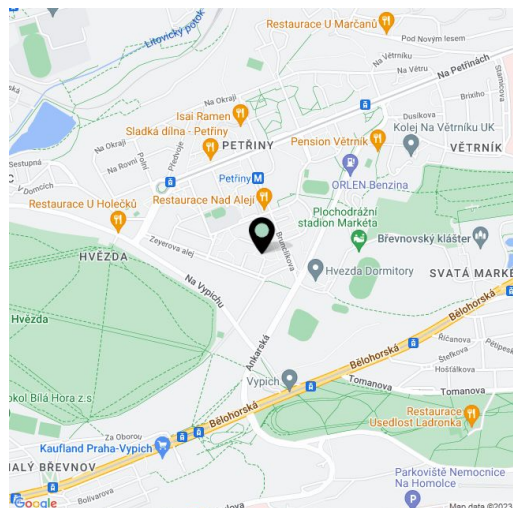
Plot	1 092 m ²
Foot print	186 m ²
Garden	906 m ²
Parking	Yes
Garage	Yes
Cellar	-
PENB	G
Reference number	27031

This detached villa from the 1930s is complete with a building reconstruction project plan and a valid building permit for a representative family residence with a beautiful garden with mature trees, situated close to Hvězda and Ladronka, on the border between Břevnov and Petřín.

The **four-story** villa projects counts for - on the ground floor - a boiler room, laundry room, wellness area, utility room and bathrooms. On the upper floor there is a main living space that offers a kitchen with a dining area, a southwest-facing living room, a **winter garden** with direct access to the garden, a separate toilet and a walk-in wardrobe. The second floor counts with a quiet zone with 3 bedrooms and 2 bathrooms, and another 2 bedrooms and 2 bathrooms are planned on the last third floor. A **lift** is also planned for. Access to the plot is from the northeast (Zeyerova Street) and also from the southwest from Na Vypichu Street.

The villa district is adjacent to the large **Hvězda** forest park. A lot of shops and full amenities can be found in nearby Petřín. Fast connection to the city center.

Interior 332 m², built-up area 186 m², garden 906 m², plot 1092 m².

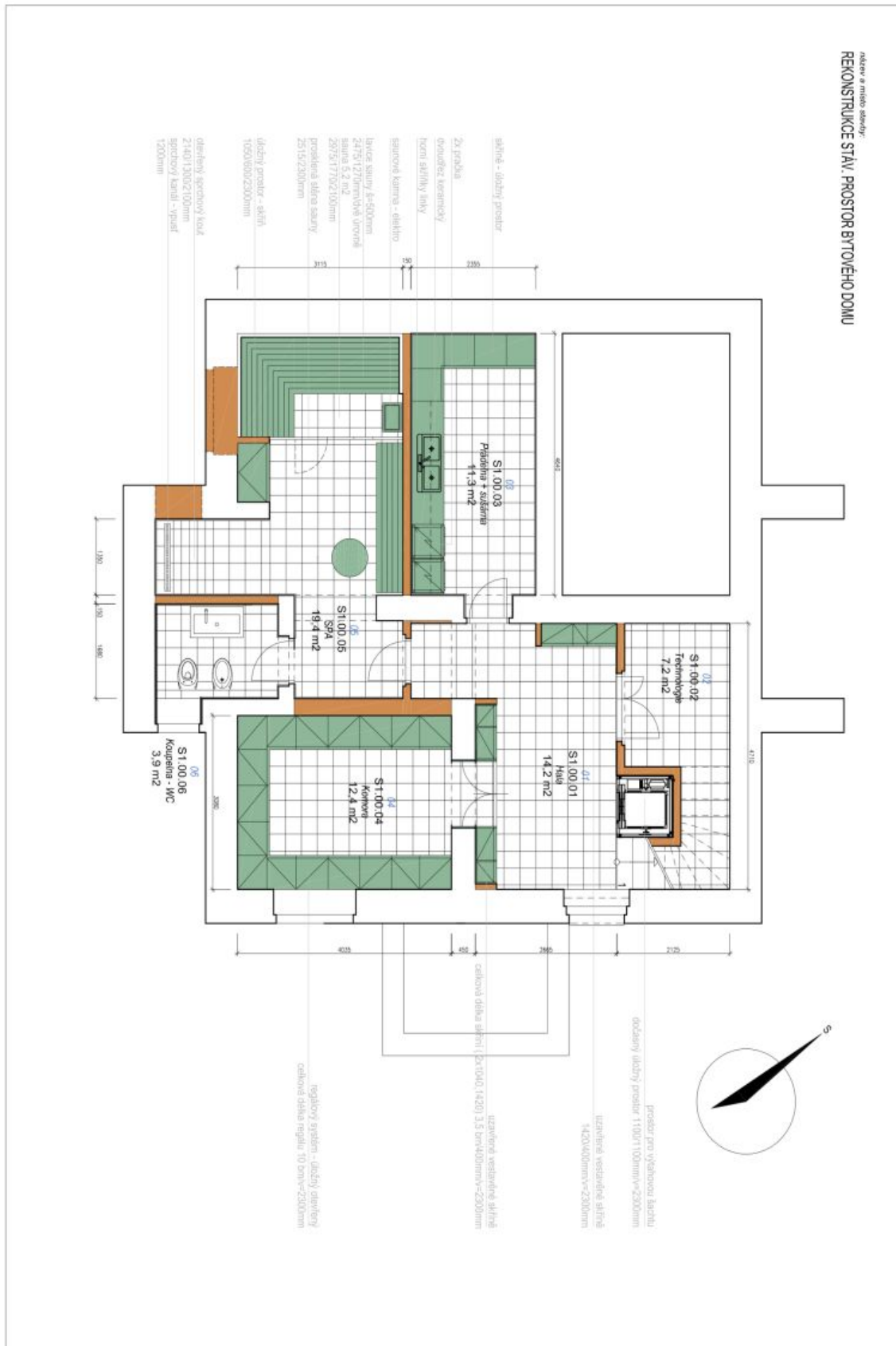




House Six-bedroom (7+kk)

332 m², Prague 6, Břevnov, Zeyerova alej

Sold

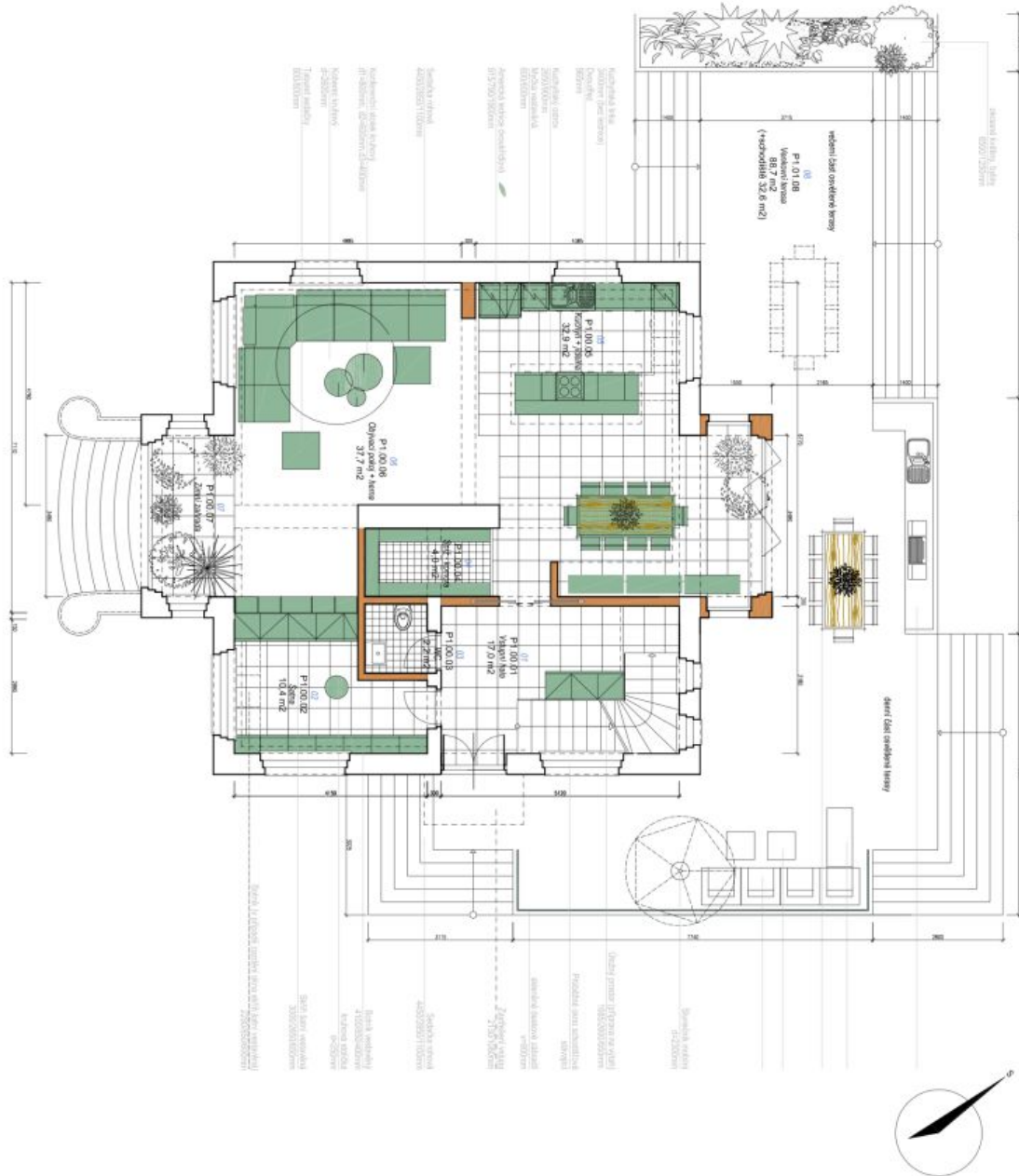




House Six-bedroom (7+kk)

332 m², Prague 6, Břevnov, Zeyerova alej

Sold

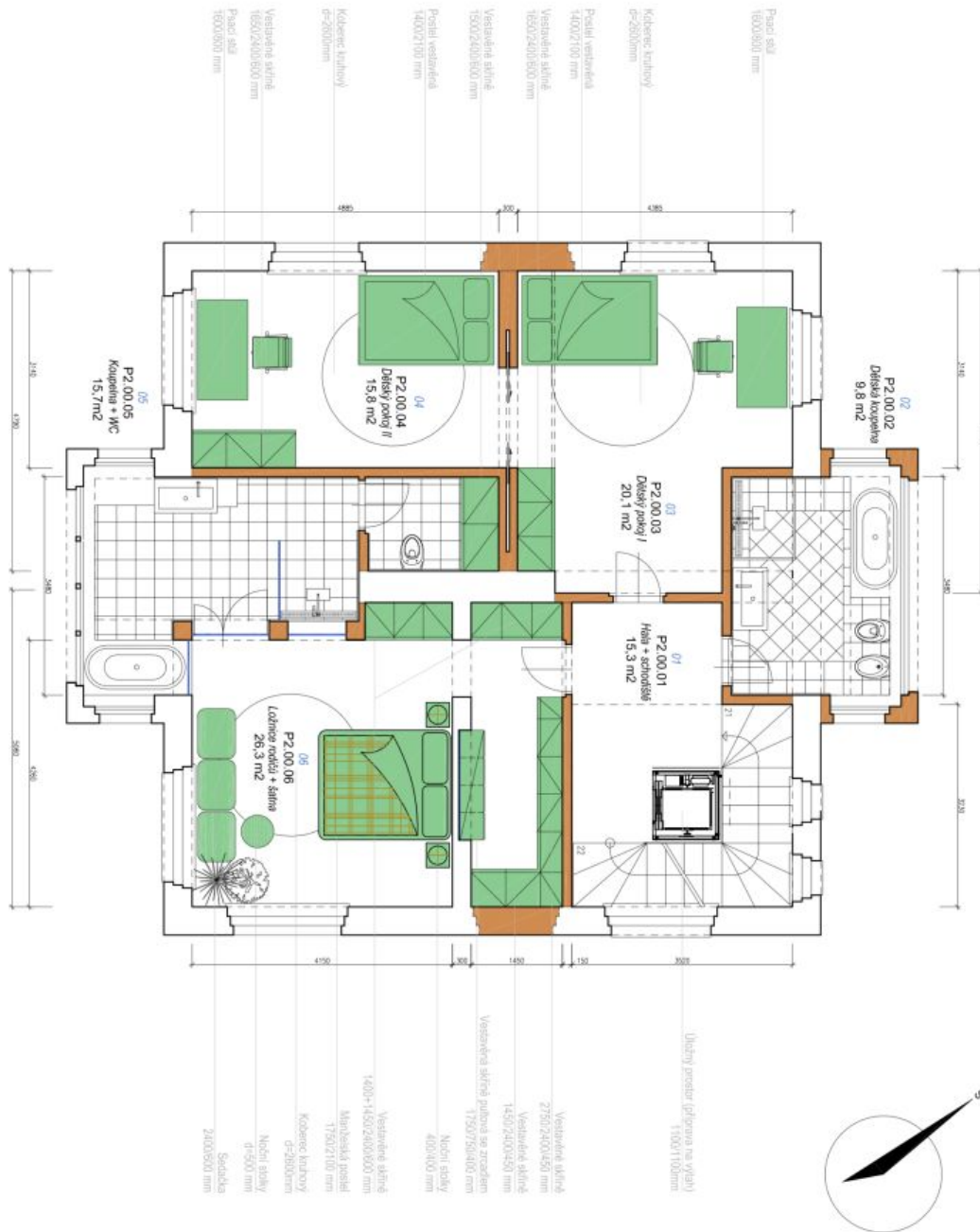




House Six-bedroom (7+kk)

332 m², Prague 6, Břevnov, Zeyerova alej

Sold





House Six-bedroom (7+kk)

332 m², Prague 6, Břevnov, Zeyerova alej

Sold

