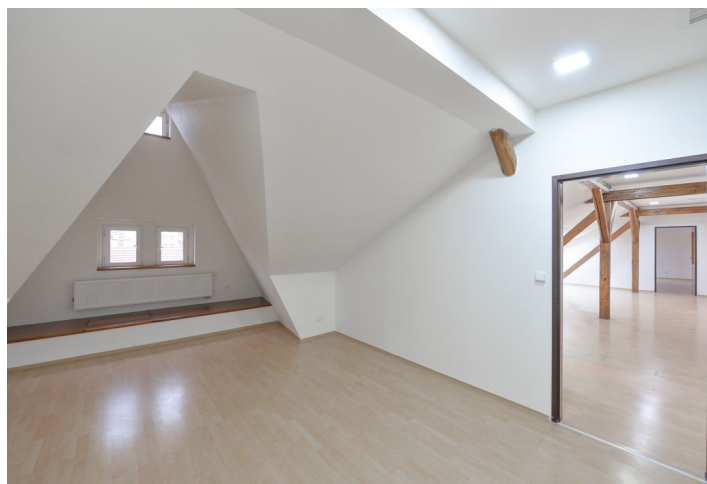




## Apartment Three-bedroom (4+kk)

Rented

162 m<sup>2</sup>, Prague 1, Nové Město, Vodičkova





## Apartment Three-bedroom (4+kk)

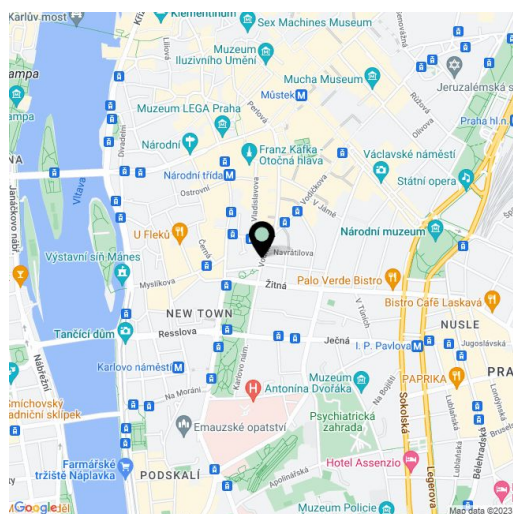
**Rented**162 m<sup>2</sup>, Prague 1, Nové Město, Vodičkova

Total area	162 m <sup>2</sup>
Parking	-
Cellar	-
PENB	G
Reference number	27116
Available from	Immediately

Attic apartment in a unique Neo-Renaissance building, part of the so called "Hlávka buildings" from 1887-98, built by a renown Czech architect Josef Fanta for a prominent Czech philanthropist Josef Hlávka. This reconstructed 3-bedroom attic flat with preserved original details is situated on the fifth floor of a renovated historic palace with gables, rich sgraffito decorations and grand interior. Located in a prime central area with full amenities and instant access to metro and multiple tram links.

The interior includes a large **air-conditioned** living room with a fully fitted open kitchen (total of 60 m<sup>2</sup>), three separate bedrooms (one is air-conditioned), bathroom with a corner bath and toilet, utility room, a guest toilet, and an open entrance hall.

Laminated floors, tiles, wooden beams, storage, electric heating, washing machine, dishwasher, lift. Common building charges and water CZK 700/person/month. Utilities are billed separately.



\* Area of the unit according to the Civil Code. The area consists of the sum total area of the entire unit bounded by perimeter walls.

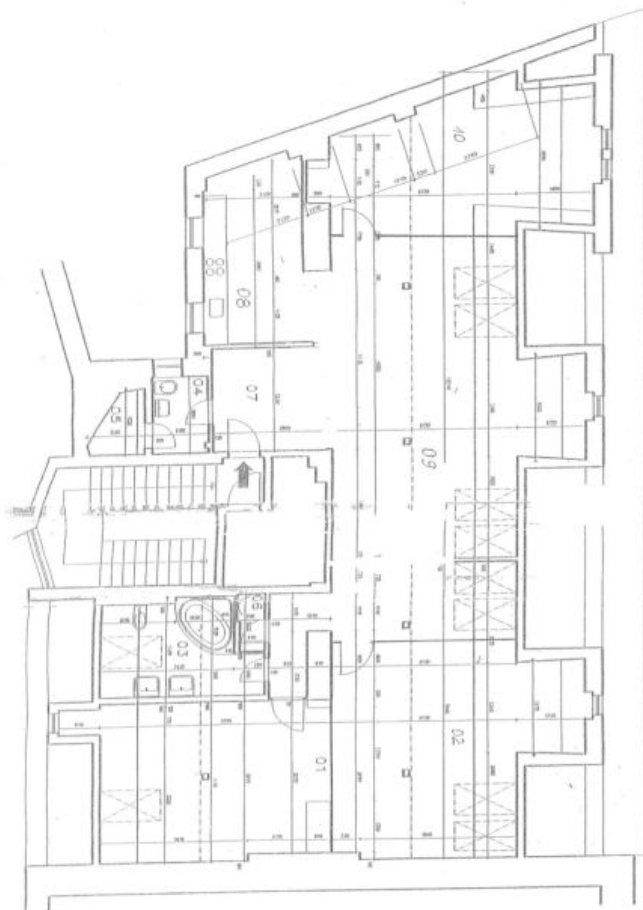


# Apartment Three-bedroom (4+kk)

162 m<sup>2</sup>, Prague 1, Nové Město, Vodičkova

Rented

Vodičkova 736/17, Praha 1  
Schodiště 3  
5.N.P. půdní vestavba byt C



### Legenda místnosti:

01	pokoj	24,90 m <sup>2</sup>
02	pokoj	25,84
03	koupelna	9,47
04	WC	2,75
05	komora	1,80
06	tech.kom.	0,99
07	předstíň	7,31
08	kuch.kout	12,75
09	pokoj	47,94
10	pokoj	27,93
Celkem:		161,68 m <sup>2</sup>