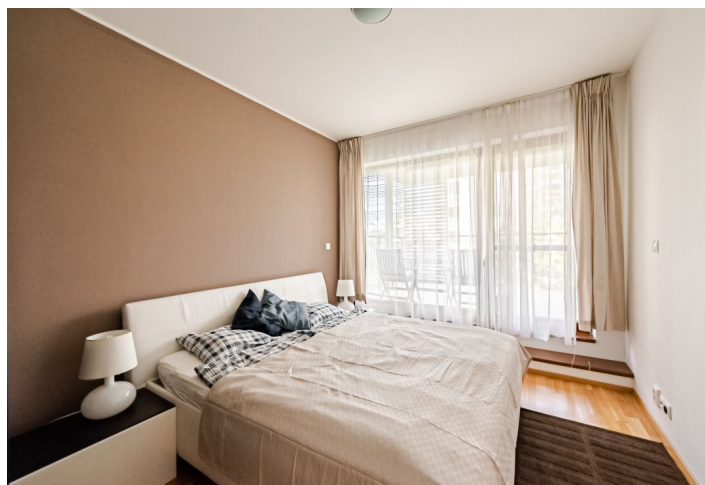
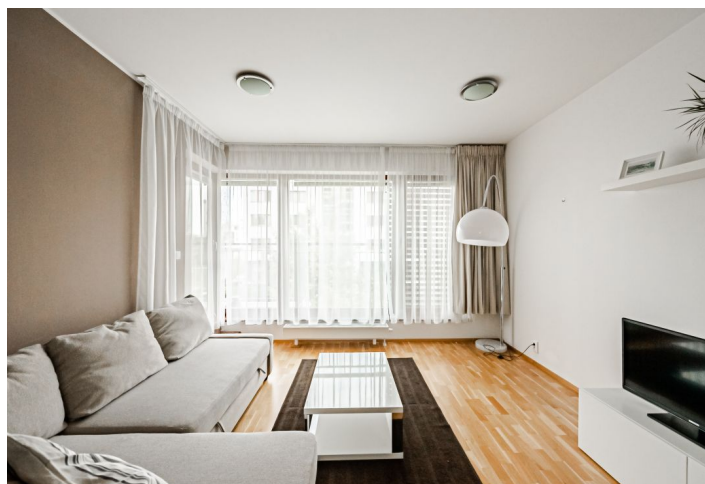
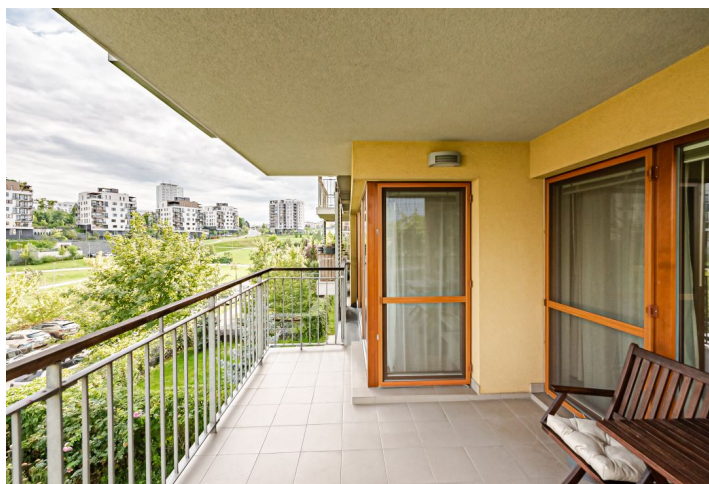




Apartment One-bedroom (2+kk)

Rented

53 m², Prague 9, Hrdlořezy, Nad Smetankou





Apartment One-bedroom (2+kk)

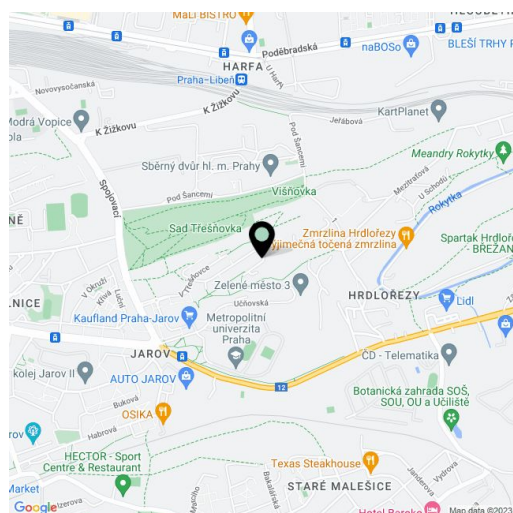
Rented53 m², Prague 9, Hrdlořezy, Nad Smetankou

Total area	64 m ²
Floor area*	53 m ²
Terrace	11 m ²
Parking	Garage parking included.
Garage	Yes
Cellar	Yes
Service price	Common building charges incl. TV, Internet, and deposit for utilities CZK 5,000/month.
PENB	G
Reference number	2712
Available from	01.06.2025

This bright, fully furnished apartment with a 10 m² terrace is situated on the ground/first floor of the Zelené město development, with underground parking and a children's playground. Located on the border of Hrdlořezy, Prague 9, and Žižkov, Prague 3, with good amenities and tram and bus connections to the city center or metro (the nearest metro station is Palmovka).

The interior includes one bedroom, a living room with a fully fitted open plan kitchen, a bathroom with a bathtub and double sink, a toilet, a laundry room, and an entry hall with built-in wardrobes. The comfortable terrace is accessible from both main rooms.

Green views, wooden parquet and tile floors, security entry door, blinds, washing machine, dryer, dishwasher, microwave oven, TV, cellar, elevator. Garage parking space included.



* Size of the unit according to the Housing Act.
The area consists of the sum total of the internal area of every room.