



Office space

Prague 7, Holešovice, Jankovcova

€ 16.50 / m² | CZK 414 / m²





Office space

Prague 7, Holešovice, Jankovcova

€ 16.50 / m² | CZK 414 / m²

Service price	140 CZK monthly per m ²
Available area	522 m ²
Cellar	-
Terrace	118 m ²
Parking	EUR 120 / ps / month
PENB	G
Reference number	27149

Office space for lease on the 6th floor with terrace in a unique urban project that combines modern office architecture with renovated historic buildings. The seven-storey building with a total of 6,500 sq. m of lettable space offers more than 90 parking spaces in underground garages. The final phase of the project was completed in 2016.

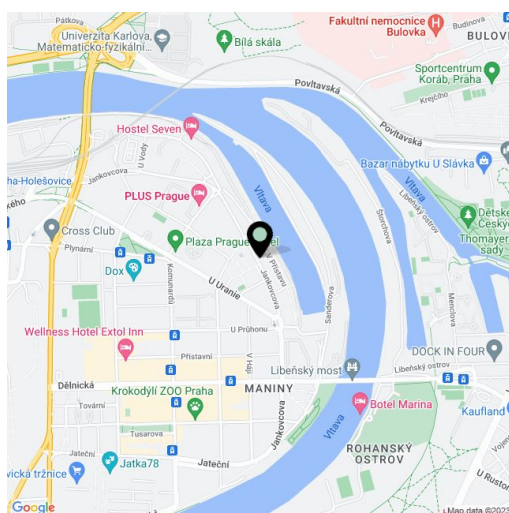
Location:

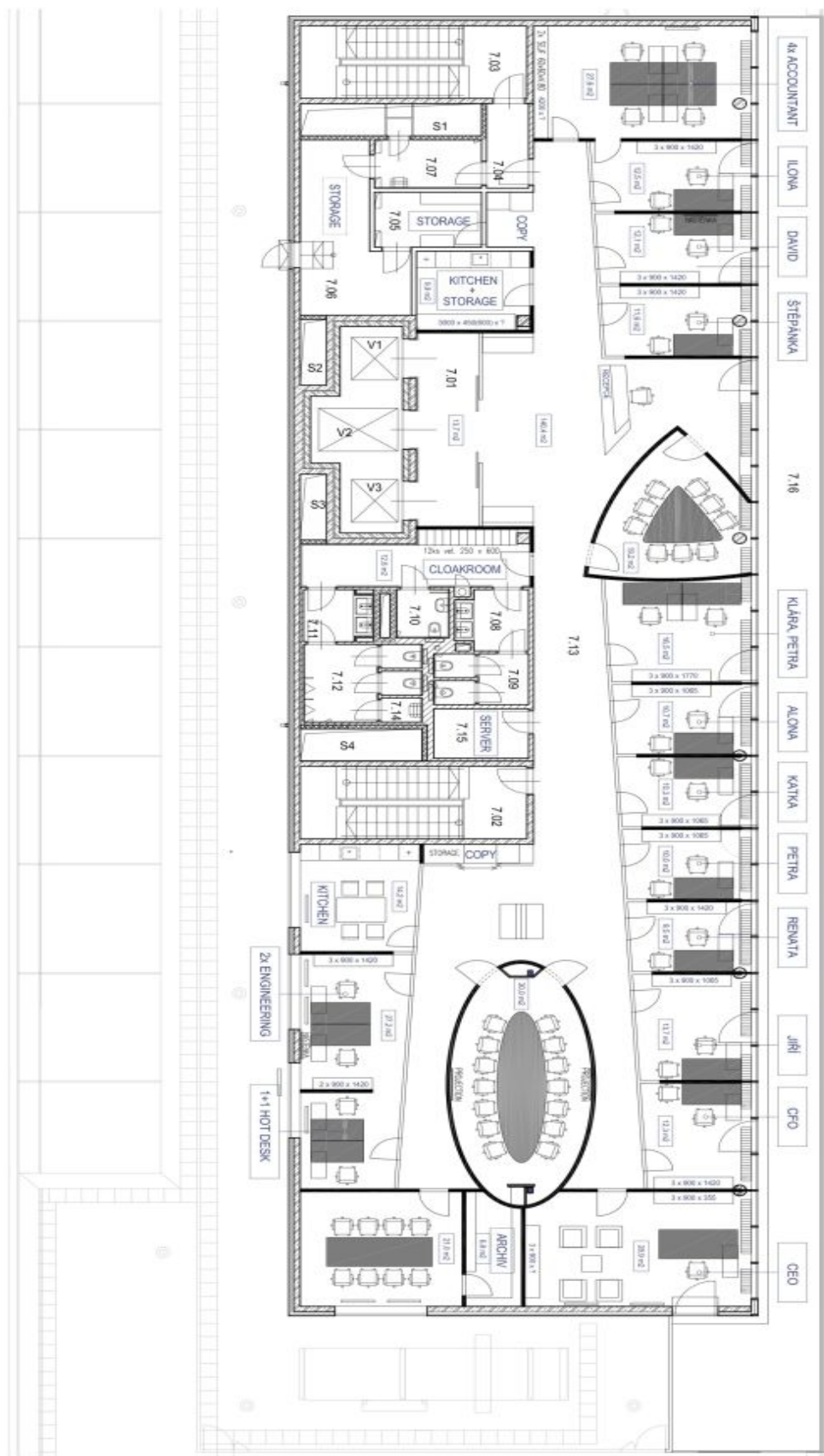
Project is located in Prague 7, close to the tram stops Ortenovo náměstí, U Průhonu and Dělnická. Number of primary transportation routes, including access to the D1 and D8 (Berlin) highways.

Features and Services:

- Raised floors with carpet
- Interior window blinds
- Air conditioning
- CCTV system for garages and outdoor areas
- Fire protection systems - alarms, sprinklers
- Smart card access

Rental and service charges are listed without VAT. Lessee pays no commission.





TEBLA MÍSTNOSTI

Č. MÍSTNOSTI	VR	7.12	WC MŮŽI	
7.01 SÍŤ-LOBBY	13,7	7.13	KANCELAR	9,2
7.02 SCHOOKST	17,9	7.14	OKLID	49,0
7.03 SCHOOKST	17,9	7.15	KUCHYN (SERVER)	1,1
7.04 CHOTBA	4,0	7.16	TERASA	5,3
7.05 ELEKTRICKÝ ROZVADĚČ	6,7	V1	VÝMĚ	117,5
7.06 TECHNICKÁ MÍSTNOST	16,8	V2	VÝMĚ	4,9
7.07 OKLID	5,9	V3	VÝMĚ	7,0
7.08 WC ŽENY PŘEDSÍN	4,7	S1	INSTALACNÍ SKŘÍŤKA	4,9
7.09 WC ŽENY	5,3	S2	INSTALACNÍ SKŘÍŤKA	6,6
7.10 WC MUŽŮ	2,9	S3	INSTALACNÍ SKŘÍŤKA	2,0
7.11 WC MUŽŮ PŘEDSÍN	4,1	S4	INSTALACNÍ SKŘÍŤKA	2,0
				4,3