



## Apartment Three-bedroom (4+kk)

Sold

113 m<sup>2</sup>, Prague 5, Košíře





## Apartment Three-bedroom (4+kk)

**Sold**113 m<sup>2</sup>, Prague 5, Košíře

Total area	131 m <sup>2</sup>
Floor area*	113 m <sup>2</sup>
Terrace	18 m <sup>2</sup>
Parking	500 000
Garage	Yes
Cellar	Yes
PENB	G
Reference number	27190

\* Area of the unit according to the Civil Code. The area consists of the sum total area of the entire unit bounded by perimeter walls.

**Newly-built apartment with a terrace to be situated on the first floor of a timeless project by a prestigious architectural firm. The residence, sensitively set into a quiet part of Košíře near the Cibulka forest park, will provide beautiful views of the Prague panorama. Completion scheduled for Q1 2019.**

This apartment offers a living room connected to a kitchen and with access to the terrace, 3 bedrooms (master bedroom with en-suite bathroom), second bathroom, guest toilet and a utility room. High standard features will include **solid wood floors, floor heating, frameless doors**, brand sanitary and tiles, **large-size sliding windows** with triple glazing, automatic garden irrigation and a **security entrance door**. For residents there will be a **reception and a private park**. Parking space and cellar at extra cost.

Full public amenities, including opportunities for sports and **excellent transport accessibility**: bus in front of the house with a 4 min. connection to a tram stop and metro station, there is a train station 300 meters away. Convenient location - easy drive to the airport or the D5 motorway.

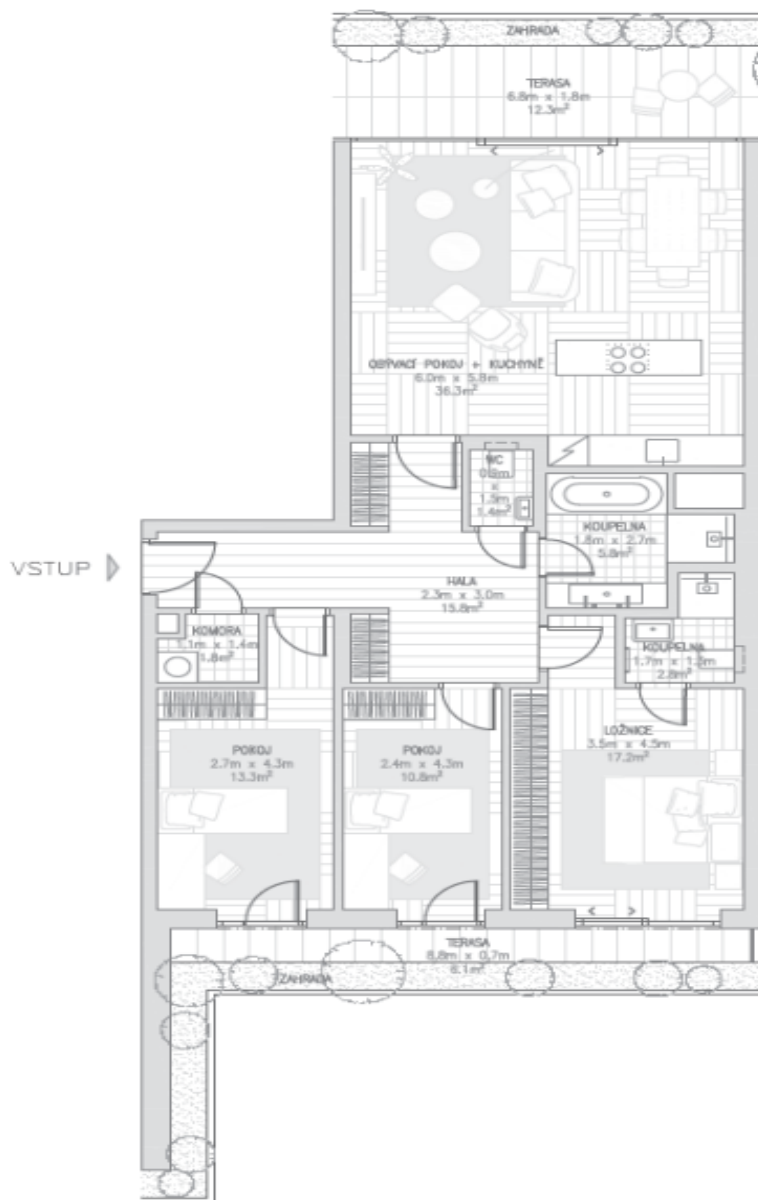
Interior 113 m<sup>2</sup>, terraces 18.4 m<sup>2</sup>.



# Apartment Three-bedroom (4+kk)

Sold

113 m<sup>2</sup>, Prague 5, Košíře



**Apartment Three-bedroom (4+kk)**113 m<sup>2</sup>, Prague 5, Košíře**Sold****LEGENDA MÍSTNOSTÍ**

OBÝVACÍ POKOJ + KUCHYŇÉ.....	36,3 m <sup>2</sup>
KOUPELNA .....	5,8 m <sup>2</sup>
KOUPELNA .....	2,8 m <sup>2</sup>
HALA.....	15,8 m <sup>2</sup>
KOMORA .....	1,8 m <sup>2</sup>
WC.....	1,4 m <sup>2</sup>
POKOJ.....	13,3 m <sup>2</sup>
POKOJ.....	10,8 m <sup>2</sup>
LOŽNICE .....	17,2 m <sup>2</sup>

ČISTÁ PODLAHOVÁ PLOCHA..... 105,2 m<sup>2</sup>**VENKOVNÍ PLOCHA**

TERASA.....	12,3 m <sup>2</sup>
TERASA.....	6,1 m <sup>2</sup>
ZAHRADA.....	11,6 m <sup>2</sup>

**CELKOVÁ PLOCHA K ZASTAVĚNÍ 113,0 m<sup>2</sup>**



# Apartment Three-bedroom (4+kk)

Sold

113 m<sup>2</sup>, Prague 5, Košíře

