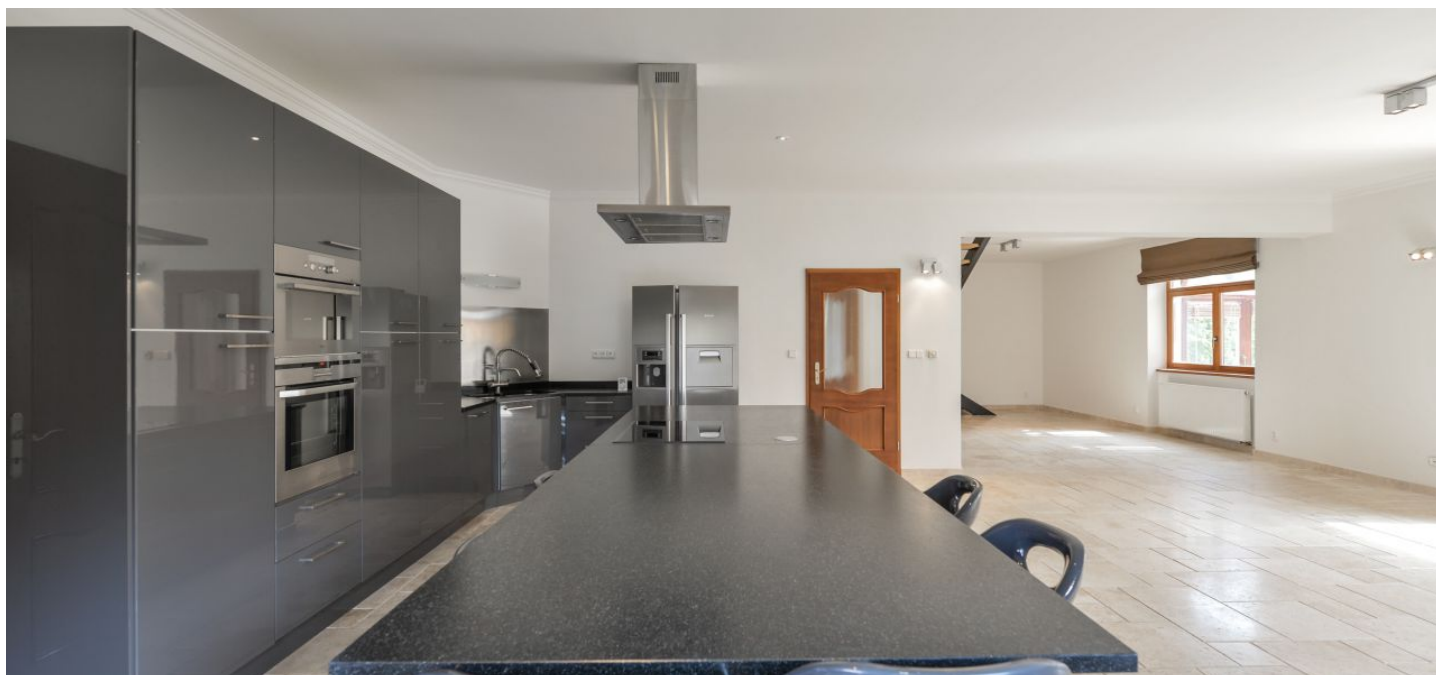




House Five-bedroom (6+kk)

Sold

380 m², Praha-západ, Tuchoměřice, Ke Stanicím





House Five-bedroom (6+kk)

Sold380 m², Praha-západ, Tučoměřice, Ke Statenicím

Plot	1 209 m ²
Foot print	260 m ²
Garden	949 m ²
Parking	Garage for 2 cars, parking on the plot
Garage	Yes
Cellar	Yes
PENB	C
Reference number	27200

This family house with a cellar and a south-facing garden, a winter garden, and a swimming pool is situated near a forest in a residential area of a quiet village with perfect access to Prague and the airport.

The ground floor consists of a spacious living room with a kitchen, a staircase, and an adjoining **winter garden**, a guest room, a study, a large entry hall with a high glass ceiling and access to the garage, a bathroom (corner bath, toilet, bidet), a guest toilet, a laundry room, a pantry, and a dressing room. The quiet zone on the first floor consists of a master bedroom with a bathroom (shower, 2 sinks, and a WC), another 3 bedrooms (including 1 with a balcony), a bathroom (bath, toilet), dressing rooms, and closets.

Facilities include **wooden floors** (on the 1st floor), floating floors and **heated tiles** (on the ground floor and bathrooms), wooden insulated double-glazed windows, Velux wooden skylights, a kitchen with AEG and Electrolux appliances, a gas boiler, and **Jablotron** security and alarm system (with sensors on all windows and doors). Parking is in a **double garage** (with a storage system) and on a paved area on the plot. **The driveway is heated.** The landscaped garden has **mature trees and ornamental shrubs**; there is a grill, a smokehouse, and a swimming pool with a sliding cover.

The village has a kindergarten and an elementary school, a post office, a grocery store, restaurants, and a large outlet shopping center. The house is in a quiet location close to the forest. A bike trail that leads to the popular **Okoř castle ruins** tourist destination is in front of the house. The local suburban bus goes to the **Bořislavka** metro station. The ride to the airport takes less than 10 minutes by car.

Interior 380 m², built-up area 260 m², garden 949 m², plot 1,209 m².

