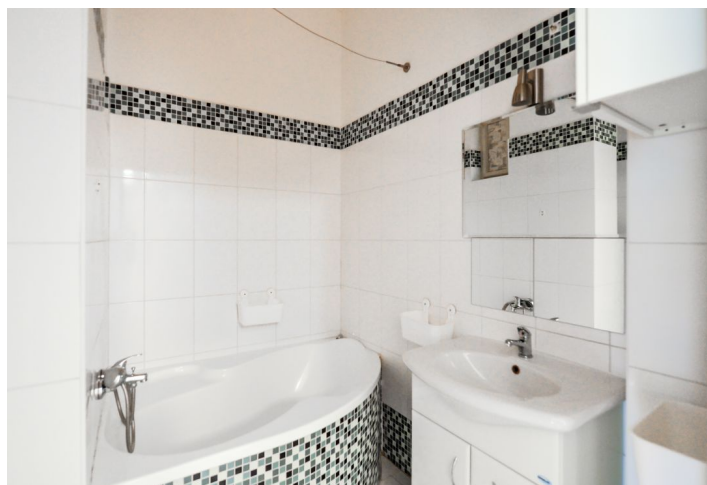




## Apartment Two-bedroom (3+1)

Rented

100 m<sup>2</sup>, Prague 2, Vinohrady, Na Švihance





## Apartment Two-bedroom (3+1)

Rented

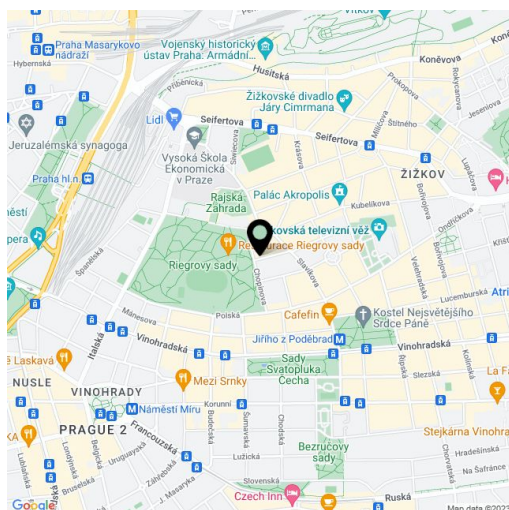
100 m<sup>2</sup>, Prague 2, Vinohrady, Na Švihance

Total area	101 m <sup>2</sup>
Floor area*	100 m <sup>2</sup>
Balcony	1 m <sup>2</sup>
Parking	-
Cellar	-
PENB	G
Reference number	27277
Available from	Immediately

Boasting a wonderful location right next to the Riegrovy sady park, this is a renovated 2-bedroom flat with a balcony on the first floor of a reconstructed residential building with lift. Located in a highly sought after residential neighborhood just a short walk from Jiřího z Poděbrad Square with metro station, rich amenities and a popular regular produce market.

The interior includes living room, a fully fitted eat-in kitchen with a balcony facing the street, two separate bedrooms facing a beautifully landscaped courtyard garden, bathroom with bath and toilet, a guest toilet, walk-in closet / storage room in one of the bedrooms, and a large central entry hall.

Preserved original details, high ceilings, **solid wood parquet** and laminated **floors**, tiles, gas heating, washing machine, dishwasher, microwave oven, camera system. Monthly deposit for common building charges, water and heating CZK 3000/month. Electricity is billed separately (transfer to the tenant).



\* Area of the unit according to the Civil Code. The area consists of the sum total area of the entire unit bounded by perimeter walls.



# Apartment Two-bedroom (3+1)

Rented

100 m<sup>2</sup>, Prague 2, Vinohrady, Na Švihance

