



## Apartment Two-bedroom (3+kk)

Sold

78 m<sup>2</sup>, Prague 3, Žižkov, Řehořova





## Apartment Two-bedroom (3+kk)

**Sold**78 m<sup>2</sup>, Prague 3, Žižkov, Řehořova

Total area	78 m <sup>2</sup>
Parking	-
Cellar	-
PENB	G
Reference number	27469

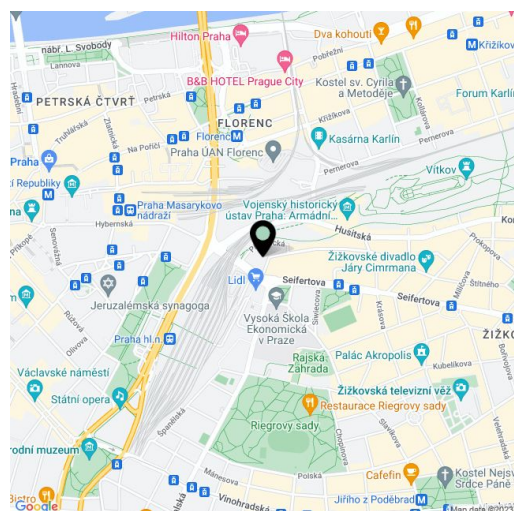
**Bright two-bedroom apartment with high ceilings situated on the 3rd floor of the new Řehořova 37 project, a sensitive renovation of an apartment building with 22 dwelling units in a popular location. Just a few minutes by tram to the center and also within easy reach of greenery and sports & leisure activities: Bike tracks, Vítkov Hill and the orchards of Rieger & Mahler (Riegrový sady & Mahlerovy sady).**

The flat is offered in its **original condition before reconstruction** with all utilities connected to the apartment and with a security entrance door. The apartment has 1-bedroom, with the architectural design counting **with the reconstruction and effective use of space for the creation of a 2-bedroom layout**, see enclosed plan.

The reconstruction of the early 20th century house with a historic facade includes a new roof, riser pipes, heating and utility networks, a gas boiler room, a new entrance door for the building, a new lift and a renovation of the facade.

Metro and tram links to the Main Train Station and the **Husinecká Tram Stop** are within walking distance. There are complete public facilities in the area including many shops, cafes and restaurants, several kindergartens and schools. Places for active relaxation such as a **cycle track, Vítkov Hill, Rieger's Orchard, Mahler's Orchard** and Parukářka Park can be found in the neighborhood.

Interior 78.85 m<sup>2</sup>.



\* Area of the unit according to the Civil Code. The area consists of the sum total area of the entire unit bounded by perimeter walls.

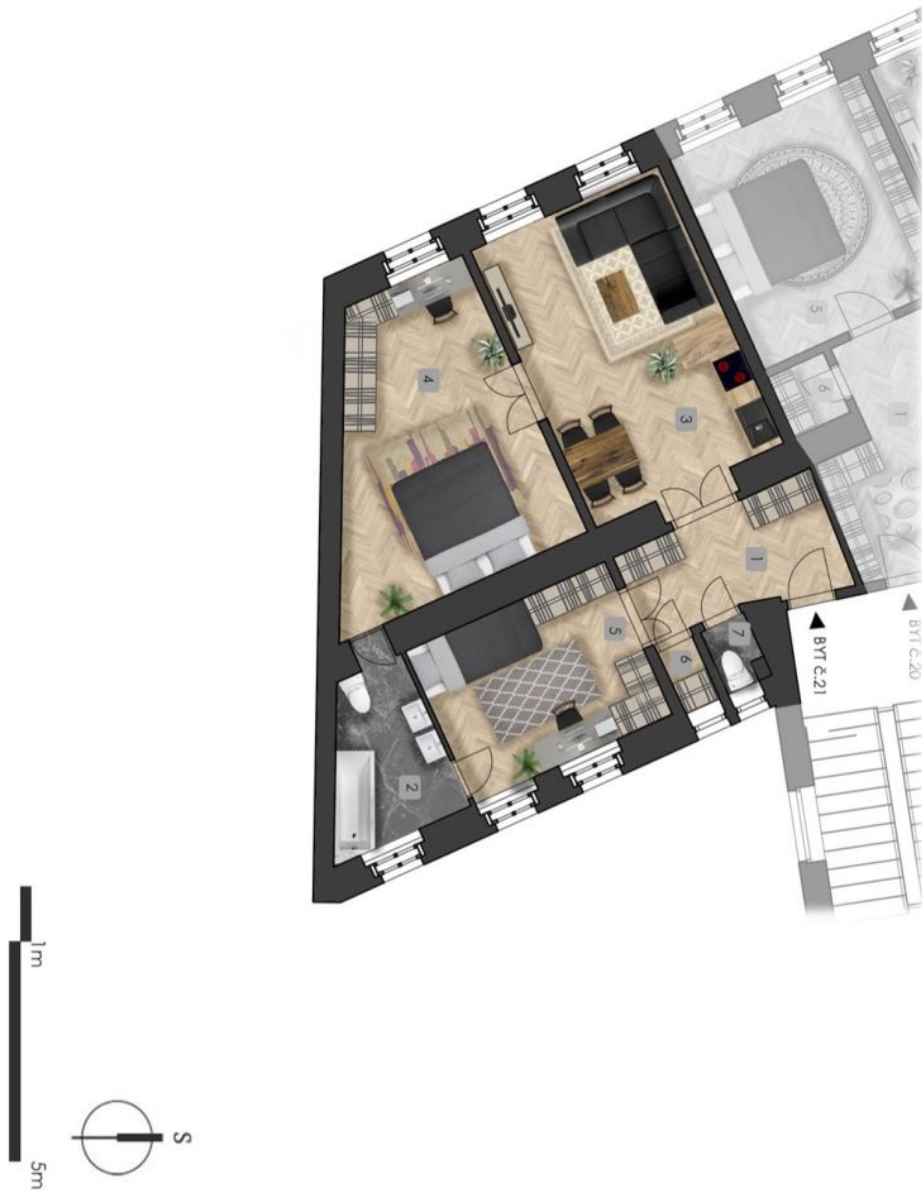




## Apartment Two-bedroom (3+kk)

78 m<sup>2</sup>, Prague 3, Žižkov, Řehořova

**Sold**





## Apartment Two-bedroom (3+kk)

78 m<sup>2</sup>, Prague 3, Žižkov, Řehořova

Sold

### Byt č.21

4.podlaží 78,85 m<sup>2</sup>

1	Chodba	8,20
2	Koupelna	6,31
3	Obývací prostor +kk	21,28
4	Pokoj	20,21
5	Pokoj	12,67
6	Komora	0,89
7	WC	1,37

Plocha bytu dle NOZ 78,85 m<sup>2</sup>



umístění bytu na patře



## Apartment Two-bedroom (3+kk)

78 m<sup>2</sup>, Prague 3, Žižkov, Řehořova

**Sold**

