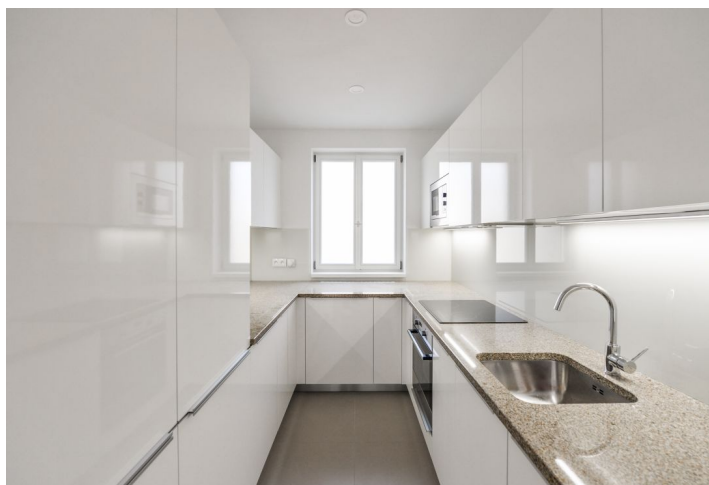
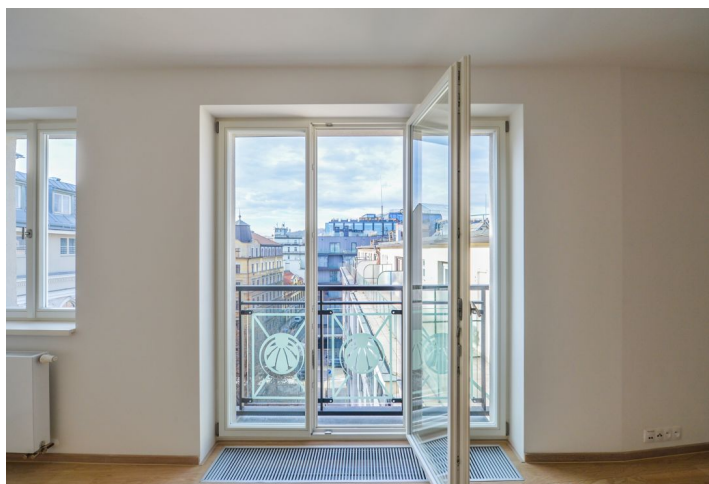




Apartment Two-bedroom (3+1)

€ 1 425 | CZK 36 000

82 m², Prague 1, Nové Město, Jungmannova





Apartment Two-bedroom (3+1)

€ 1 425 | CZK 36 000

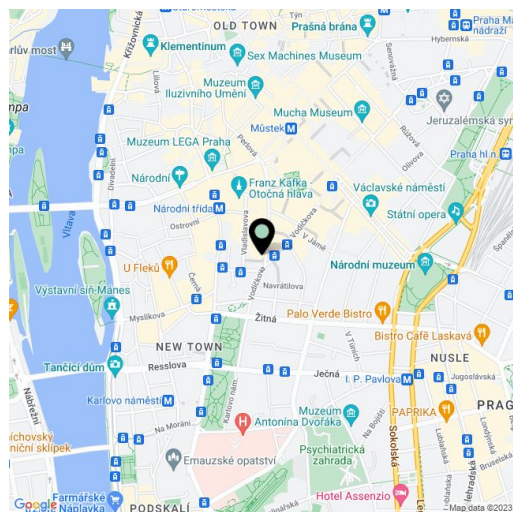
82 m², Prague 1, Nové Město, Jungmannova

Total area	82 m²
Parking	-
Cellar	-
Service price	Deposit for common building charges and water CZK 6,000/month. Electricity - transfer to the tenant.
PENB	Not required
Reference number	27601
Available from	Immediately

Benefiting from a prime central location, this 2-bathroom apartment is situated on the 4th floor of a historic building which was completely rebuilt and modernized incl. a meticulously preserved original 1920s Art Deco facade and an interior passage connecting Jungmannova Street with Purkyňova and Vladislavova streets. The front facade in the style of German Expressionism was designed by architects Viktor Lampl and Otto Fuchs. This unique multifunctional building is located in the financial and commercial center of Prague just moments from the new Quadrio shopping mall, with excellent access by public transport, minutes from the Národní třída metro station (line B) and tram line hub as well as the Můstek (lines A, B) metro. A wide range of amenities and services available in close vicinity, quiet despite the central location.

The interior features a living room with a dining area, fully fitted kitchen, two separate bedrooms, a shower bathroom with a toilet, a bathroom with a bathtub, bidet and toilet, and an entrance hall.

High-standard materials and finishes, **oak floors**, tiles, heated bathroom floors, thermally insulated **double glazed windows**, central gas heating, **granite kitchen worktop**, dishwasher, induction cooktop, microwave oven, washer with dryer, video entry phone, chip entry to the building. Can be furnished at a higher rent.



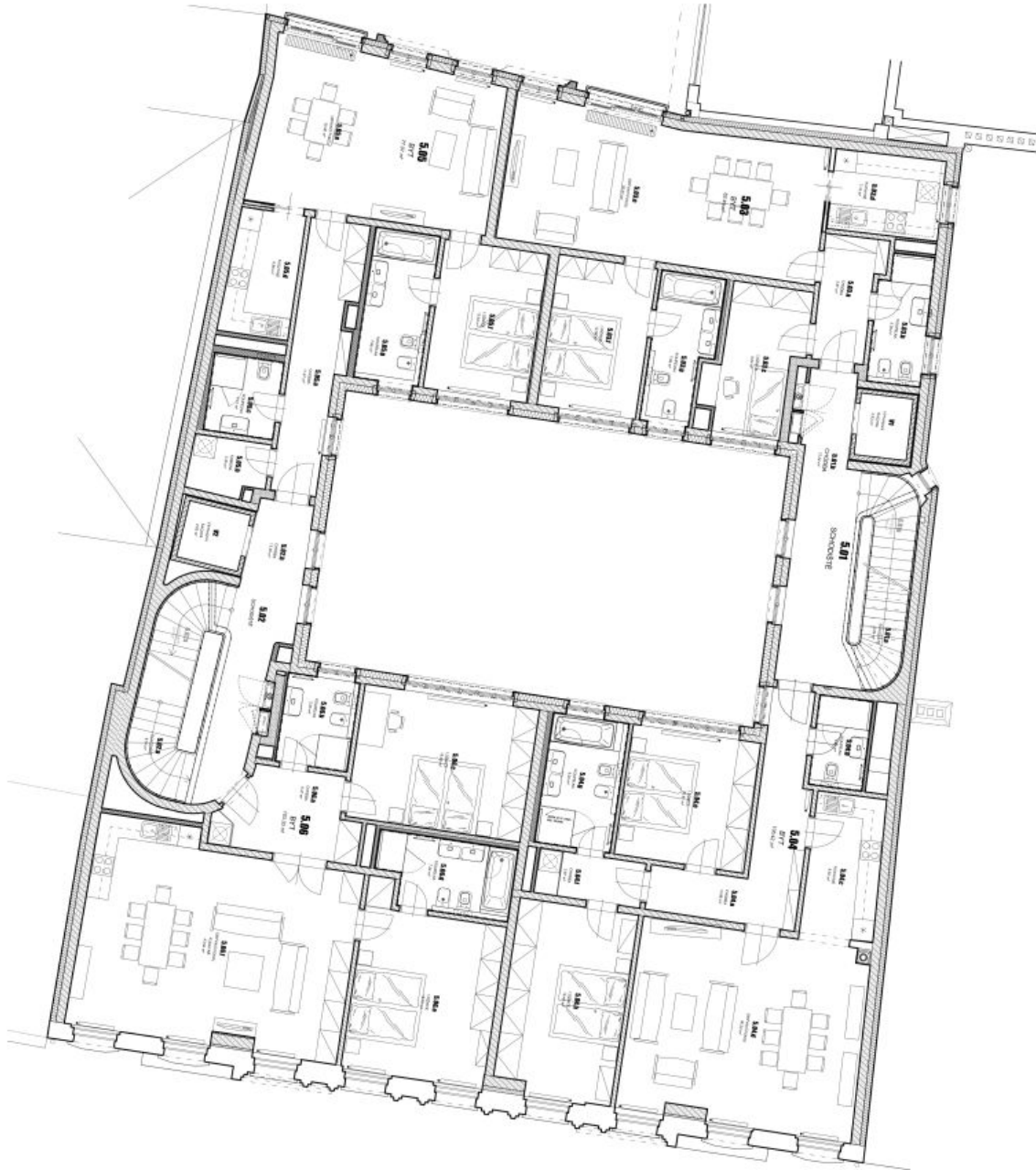
* Area of the unit according to the Civil Code. The area consists of the sum total area of the entire unit bounded by perimeter walls.



Apartment Two-bedroom (3+1)

€ 1 425 | CZK 36 000

82 m², Prague 1, Nové Město, Jungmannova



TABULKA MÍSTNOSTI - 5.NP			
d.m.	NAZEV MÍSTNOSTI	m ²	m ²
5.01	SPALOVNĚ	23,82	
5.01a	SPALOVNĚ	8,29	
5.01b	CHÝBA	15,54	
5.02	SPALOVNĚ	23,11	
5.02a	SPALOVNĚ	13,38	
5.02b	CHÝBA	9,74	
5.03	BYT	82,49	
5.03a	CHÝBA	5,61	
5.03b	KORPUS	5,38	
5.03c	LOŽNICE	9,63	
5.03d	KUCHYNĚ	7,15	
5.03e	OBÝVAJ. PRŮCH	35,57	
5.03f	LOŽNICE	12,89	
5.03g	KORPUS	7,06	
5.04	BYT	105,42	
5.04a	CHÝBA	12,86	
5.04b	KORPUS	3,91	
5.04c	KUCHYNĚ	8,32	
5.04d	OBÝVAJ. PRŮCH	36,22	
5.04e	LOŽNICE	13,61	
5.04f	CHÝBA	3,87	
5.04g	KORPUS	8,03	
5.04h	LOŽNICE	18,40	
5.05	BYT	77,07	
5.05a	CHÝBA	11,47	
5.05b	KORPUS	3,35	
5.05c	KORPUS	4,41	
5.05d	KUCHYNĚ	6,88	
5.05e	OBÝVAJ. PRŮCH	30,46	
5.05f	LOŽNICE	12,54	
5.05g	KORPUS	7,96	
5.06	BYT	103,33	
5.06a	CHÝBA	8,47	
5.06b	KORPUS	5,23	
5.06c	LOŽNICE	18,83	
5.06d	KORPUS	7,44	
5.06e	LOŽNICE	18,70	
5.06f	OBÝVAJ. PRŮCH, KUCHYNĚ	43,64	
VI	CELKEM (bez výtahových šachet)	415,24	
VI1	VÝTAHOVÁ ŠACHTA	2,63	
VI2	VÝTAHOVÁ ŠACHTA	2,93	
	TOTAL FLATS	358,31	