



## Apartment Two-bedroom (3+1)

Rented

82 m<sup>2</sup>, Prague 1, Nové Město, Jungmannova





## Apartment Two-bedroom (3+1)

Rented

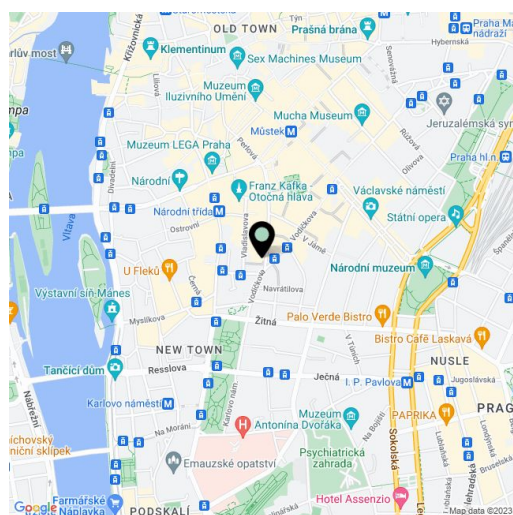
82 m<sup>2</sup>, Prague 1, Nové Město, Jungmannova

Total area	82 m <sup>2</sup>
Parking	-
Cellar	-
Service price	Deposit for common building charges and water CZK 6,000/month. Electricity - transfer to the tenant.
PENB	Not required
Reference number	27602
Available from	Immediately

Benefiting from a prime central location, this partly furnished apartment with 2 bathrooms is situated on the third floor of a historic building which was completely rebuilt and modernized incl. a meticulously preserved original 1920s Art Deco facade and an interior passage connecting Jungmannova Street with Purkyňova and Vladislavova streets. The front facade in the style of German Expressionism was designed by architects Viktor Lampl and Otto Fuchs. This unique multifunctional building is located in the financial and commercial center of Prague just moments from the new Quadrio shopping mall, with excellent access by public transport, just minutes from the Národní třída metro station (line B) and tram line hub as well as the Můstek (lines A, B) metro station. Wide range of amenities and services available in close vicinity, quiet despite the central location.

The interior features a living room with a dining area, a fully fitted kitchen, two separate bedrooms, a shower bathroom with a toilet, a bathroom with a bathtub, bidet, and toilet, and an entrance hall.

High standard materials and finishes, **oak floors**, tiles, heated bathroom floors, thermally insulated **double glazed windows**, central gas heating, **granite kitchen worktop**, dishwasher, induction cooktop, microwave oven, video entry phone, washer with dryer, chip entry to the building.



\* Size of the unit according to the Housing Act.

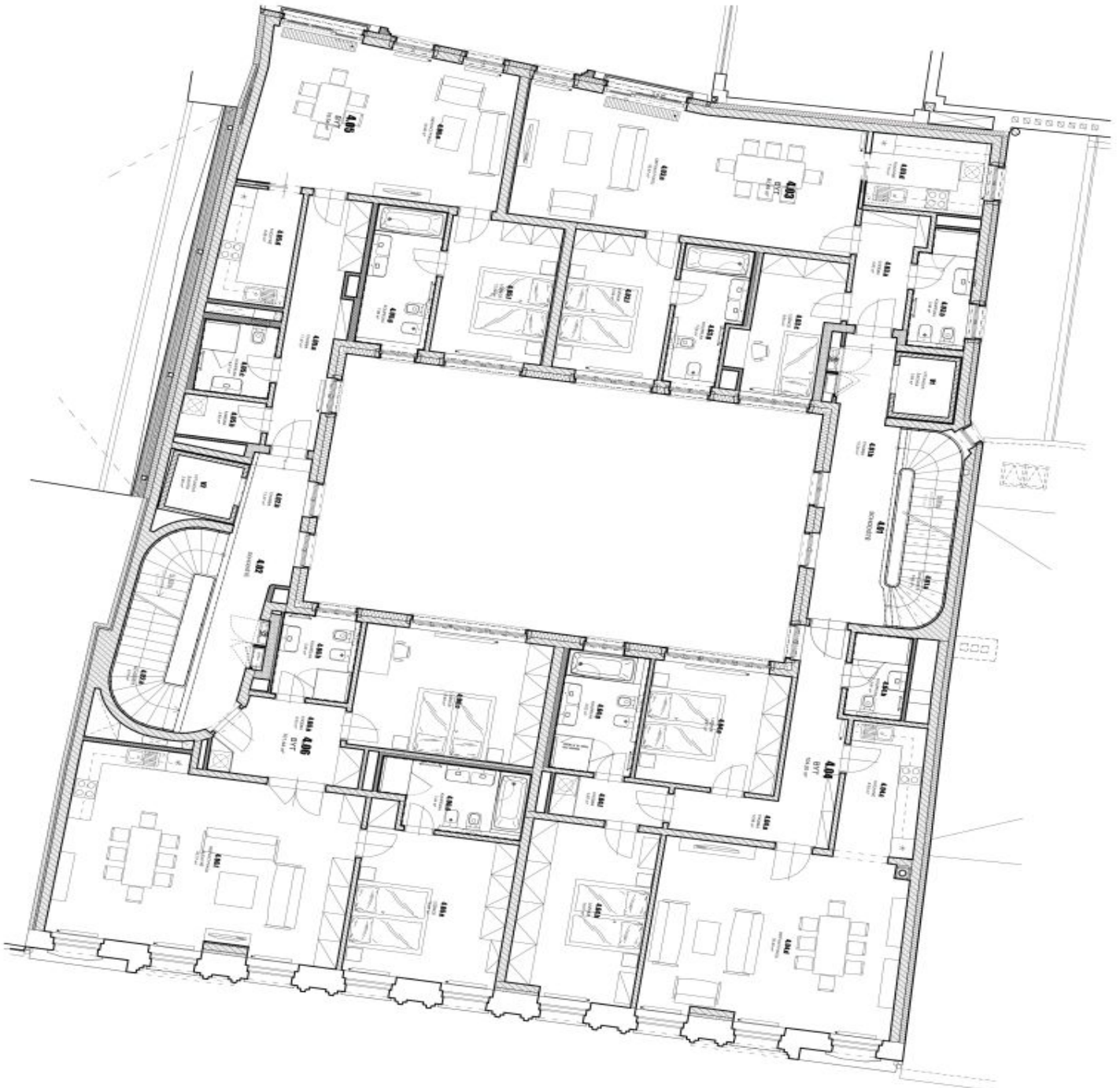
The area consists of the sum total of the internal area of every room.



# Apartment Two-bedroom (3+1)

Rented

82 m<sup>2</sup>, Prague 1, Nové Město, Jungmannova



TABULKA MÍSTNOSTÍ - 4 NP			
č.m.	NÁZEV MÍSTNOSTI	m <sup>2</sup>	m <sup>2</sup>
4.01	SPALOVNĚ	23,85	
4.01.a	SPALOVNĚ		8,05
4.01.b	OKOUBA		15,20
4.02	SPALOVNĚ	23,11	
4.02.a	SPALOVNĚ		9,74
4.02.b	OKOUBA		13,37
4.03	BYT	82,49	
4.03.a	OKOUBA		5,62
4.03.b	KOUPELNA		5,38
4.03.c	LÓŽNICE		8,83
4.03.d	KUCHYNĚ		7,15
4.03.e	OBYVACÍ PROSTOR		35,57
4.03.f	LÓŽNICE		12,09
4.03.g	KOUPELNA		7,06
4.04	BYT	104,20	
4.04.a	OKOUBA		12,86
4.04.b	KOUPELNA		3,91
4.04.c	KUCHYNĚ		8,33
4.04.d	OBYVACÍ PROSTOR		35,40
4.04.e	LÓŽNICE		15,61
4.04.f	OKOUBA		3,87
4.04.g	KOUPELNA		8,03
4.04.h	LÓŽNICE		18,01
4.05	BYT	76,54	
4.05.a	OKOUBA		11,47
4.05.b	KUCHYNĚ		2,83
4.05.c	KOUPELNA		4,41
4.05.d	KUCHYNĚ		6,88
4.05.e	OBYVACÍ PROSTOR		30,46
4.05.f	LÓŽNICE		12,54
4.05.g	KOUPELNA		7,98
4.06	BYT	101,44	
4.06.a	OKOUBA		8,23
4.06.b	KOUPELNA		5,23
4.06.c	LÓŽNICE		18,83
4.06.d	KOUPELNA		7,44
4.06.e	LÓŽNICE		18,83
4.06.f	OBYVACÍ PROSTOR, KUCHYNĚ		42,77
CELKEM (bez výtahových šachet)		411,63	
V1	VÝTĚHOVÁ ŠACHTA	2,63	
V2	VÝTĚHOVÁ ŠACHTA	2,93	
TOTAL FLATS			364,67