



Apartment One-bedroom (2+kk)

Rented

77 m², Praha 1, Nové Město, Jungmannova





Apartment One-bedroom (2+kk)

Rented

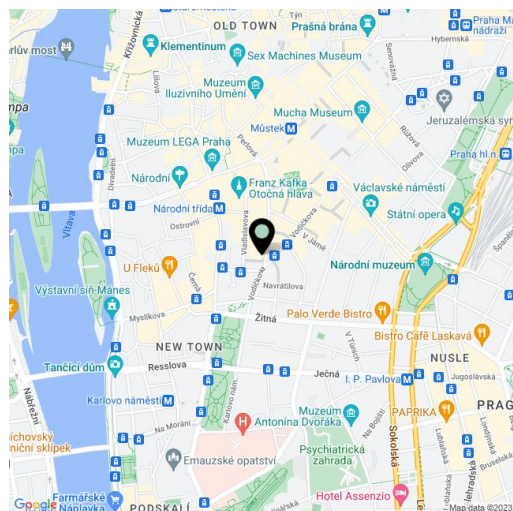
77 m², Praha 1, Nové Město, Jungmannova

| | |
|------------------|-------------------|
| Total area | 77 m ² |
| Parking | - |
| Cellar | - |
| PENB | G |
| Reference number | 27608 |
| Available from | Immediately |

Benefiting from a prime central location, this brand new 1-bedroom 2-bathroom flat is situated on the fifth floor of a historic building which was completely rebuilt and modernized incl. a meticulously preserved original 1920s Art Deco facade and an internal passage connecting Jungmannova street with Purkyňova and Vladislavova streets. The front facade in the style of German Expressionism was designed by architects Viktor Lampl and Otto Fuchs. This unique multifunctional building is located in the financial and commercial center of Prague just moments from the new Quadrio shopping mall, with excellent access by public transport, just minutes from Národní třída metro station (line B) and tram line hub as well as Můstek (lines A, B) metro. Wide range of amenities and services available in close vicinity, quiet despite the central location.

The interior features living room with French windows, a fully fitted open kitchen, one bedroom with an en-suite bathroom (bath, bidet, toilet), family bathroom (walk-in shower, toilet), walk-in closet with utility area, and entrance hall.

High standard materials and finishes, **oak floors**, tiles, heated bathroom floors, thermally insulated double glazed windows, central gas heating, **granite kitchen worktop**, dishwasher, induction cooktop, microwave oven, video entry phone, chip entry to the building. Can be furnished at a higher rent. Common building charges and deposit for utilities are billed separately.



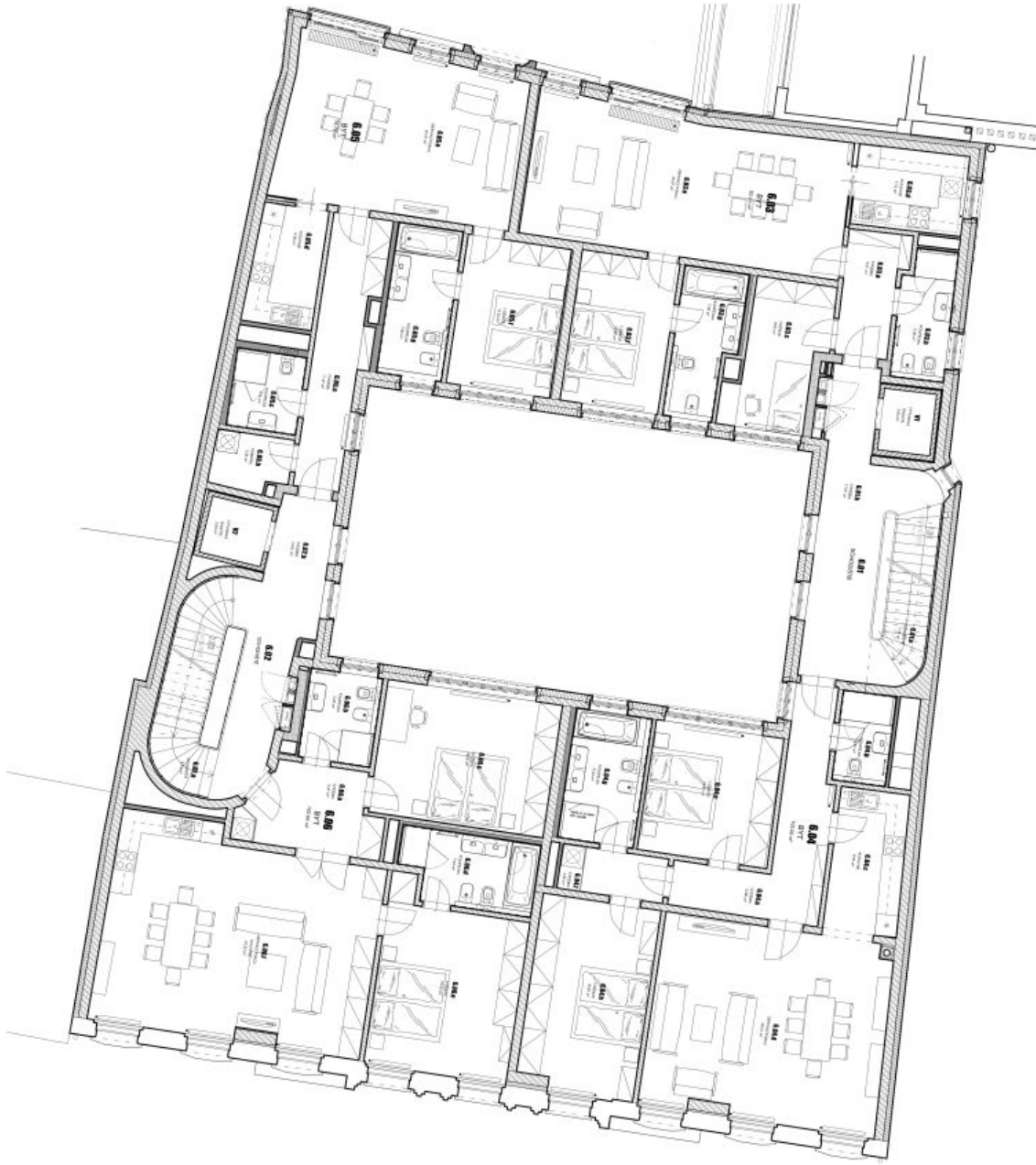
* Area of the unit according to the Civil Code. The area consists of the sum total area of the entire unit bounded by perimeter walls.



Apartment One-bedroom (2+kk)

77 m², Praha 1, Nové Město, Jungmannova

Rented



| TABULKA MÍSTNOSTÍ - 6.NP | | | |
|--------------------------------|---------------------------|----------------|----------------|
| č.m. | NAZEV MÍSTNOSTI | m ² | m ² |
| 6.01 | SOUKOŠTĚ | 25,69 | |
| 6.01a | SOUKOŠTĚ | | 7,78 |
| 6.01b | OKOUBA | | 17,91 |
| 6.02 | SOUKOŠTĚ | 24,35 | |
| 6.02a | SOUKOŠTĚ | | 9,74 |
| 6.02b | OKOUBA | | 14,61 |
| 6.03 | BT | 82,43 | |
| 6.03a | OKOUBA | | 5,81 |
| 6.03b | KOUPELNA | | 5,38 |
| 6.03c | LOŽNICE | | 9,83 |
| 6.03d | KUCHYNĚ | | 7,15 |
| 6.03e | SPRACOVÁNÍ POKOJ | | 35,37 |
| 6.03f | LOŽNICE | | 12,02 |
| 6.03g | KOUPELNA | | 7,86 |
| 6.04 | BT | 105,00 | |
| 6.04a | OKOUBA | | 12,88 |
| 6.04b | KOUPELNA | | 3,91 |
| 6.04c | KUCHYNĚ | | 8,52 |
| 6.04d | SPRACOVÁNÍ POKOJ | | 36,01 |
| 6.04e | LOŽNICE | | 13,81 |
| 6.04f | OKOUBA | | 3,85 |
| 6.04g | KOUPELNA | | 8,03 |
| 6.04h | LOŽNICE | | 18,20 |
| 6.05 | BT | 76,78 | |
| 6.05a | OKOUBA | | 11,47 |
| 6.05b | KOUBA | | 3,35 |
| 6.05c | KOUPELNA | | 4,41 |
| 6.05d | KUCHYNĚ | | 6,38 |
| 6.05e | SPRACOVÁNÍ POKOJ | | 30,47 |
| 6.05f | LOŽNICE | | 12,54 |
| 6.05g | KOUPELNA | | 7,96 |
| 6.06 | BT | 102,64 | |
| 6.06a | OKOUBA | | 8,47 |
| 6.06b | KOUPELNA | | 5,23 |
| 6.06c | LOŽNICE | | 18,83 |
| 6.06d | KOUPELNA | | 7,44 |
| 6.06e | LOŽNICE | | 19,45 |
| 6.06f | SPRACOVÁNÍ POKOJ, KUCHYNĚ | | 43,22 |
| CELKOVÁ (bez výhledových sáhů) | | 416,89 | |
| V1 | VÝTAHOVÁ ŠACHTA | 2,63 | |
| V2 | VÝTAHOVÁ ŠACHTA | 2,93 | |
| TOTAL FLATS | | | 366,85 |