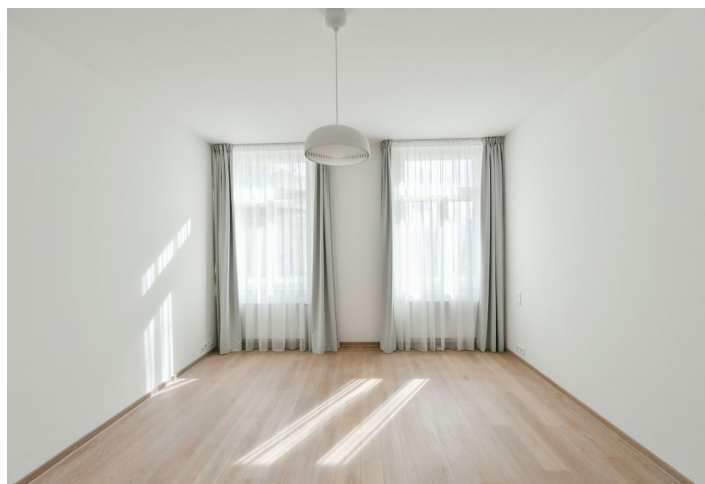
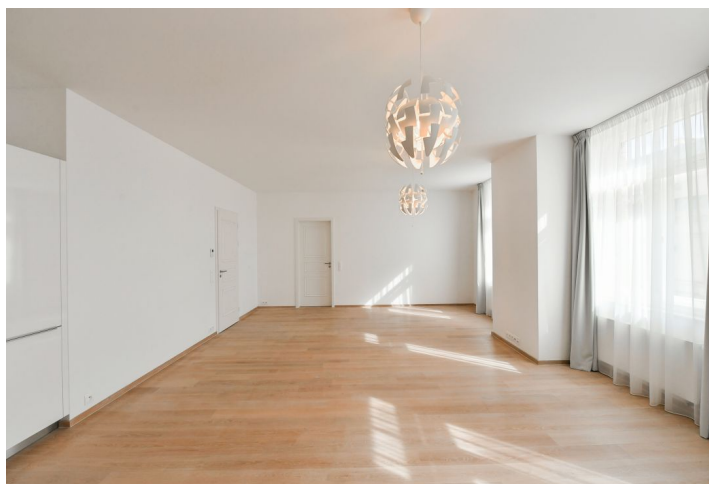




Apartment Two-bedroom (3+kk)

Rented

103 m², Prague 1, Nové Město, Jungmannova





Apartment Two-bedroom (3+kk)

Rented

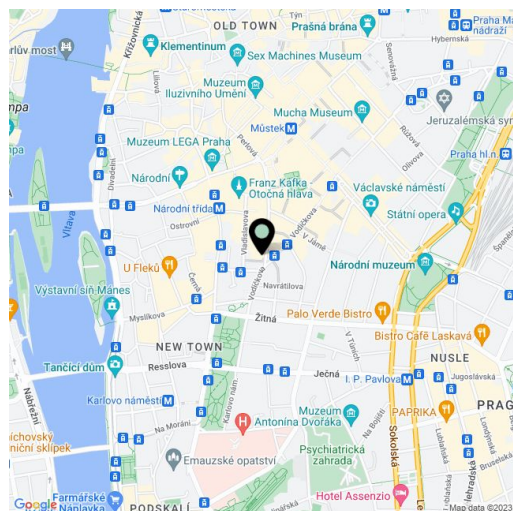
103 m², Prague 1, Nové Město, Jungmannova

Total area	103 m ²
Parking	-
Cellar	-
PENB	G
Reference number	27611
Available from	Immediately

Benefiting from a prime central location, this brand new 2-bedroom 2-bathroom flat is situated on the fifth floor of a historic building which was completely rebuilt and modernized incl. a meticulously preserved original 1920s Art Deco facade and an internal passage connecting Jungmannova street with Purkyňova and Vladislavova streets. The front facade in the style of German Expressionism was designed by architects Viktor Lampl and Otto Fuchs. This unique multifunctional building is located in the financial and commercial center of Prague just moments from the new Quadrio shopping mall, with excellent access by public transport, just minutes from Národní třída metro station (line B) and tram line hub as well as Můstek (lines A, B) metro. Wide range of amenities and services available in close vicinity, quiet despite the central location.

The interior features living room with a fully fitted open kitchen, master bedroom with a full en-suite bathroom, second bedroom, family bathroom (walk-in shower, bidet, toilet), and entrance hall.

High standard materials and finishes, **oak floors**, tiles, heated bathroom floors, thermally insulated double glazed windows, central gas heating, **granite kitchen worktop**, dishwasher, induction cooktop, microwave oven, video entry phone, chip entry to the building. Can be furnished at a higher rent. Common building charges and deposit for utilities are billed separately.



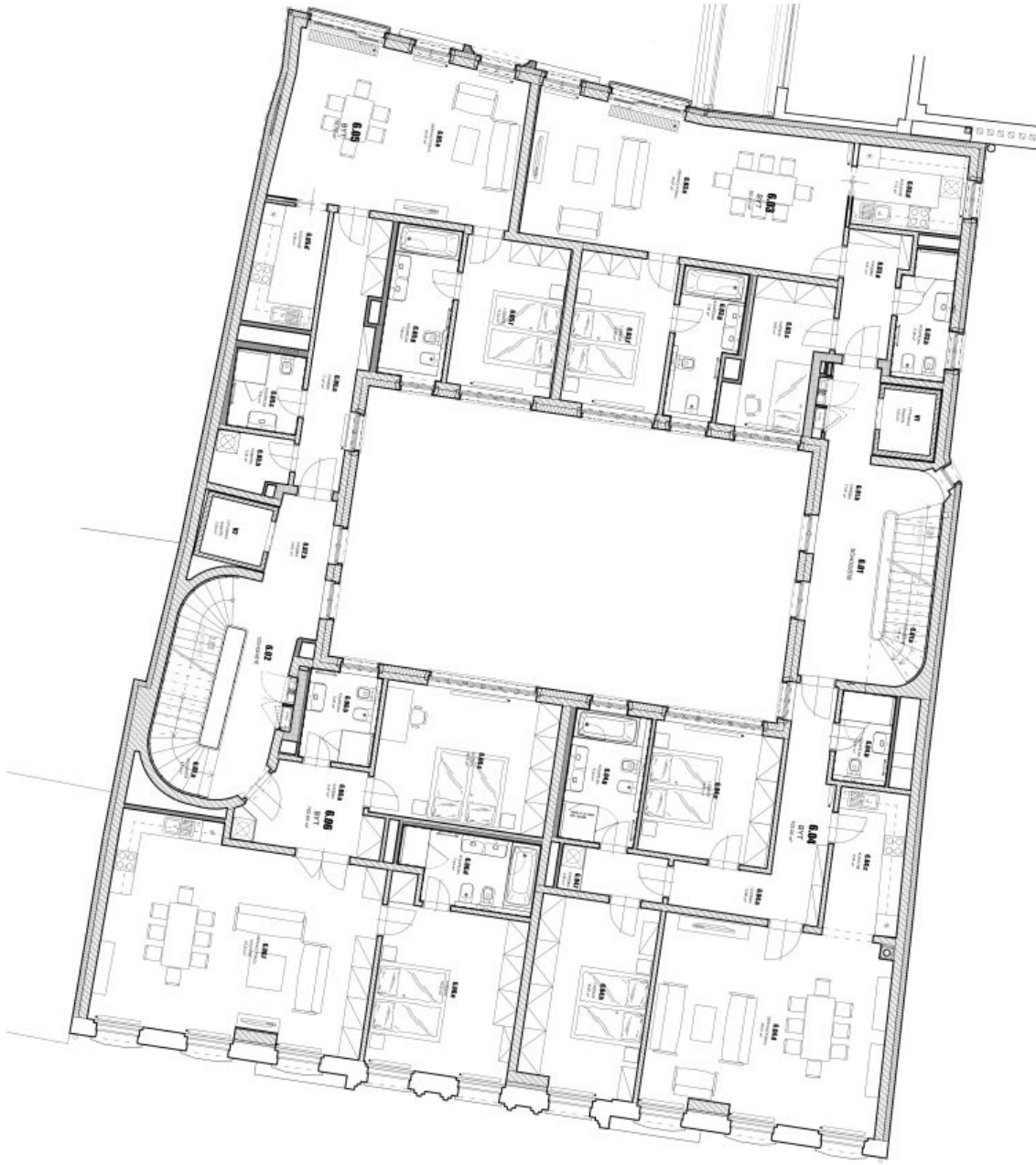
* Area of the unit according to the Civil Code. The area consists of the sum total area of the entire unit bounded by perimeter walls.



Apartment Two-bedroom (3+kk)

103 m², Prague 1, Nové Město, Jungmannova

Rented



TABULKA MÍSTNOSTÍ - 6.NP			
č.m.	NAZEV MÍSTNOSTI	m ²	m ²
6.01	SOUKOŠTĚ	25,69	
6.01a	SOUKOŠTĚ		7,78
6.01b	OKOUBA		17,91
6.02	SOUKOŠTĚ	24,35	
6.02a	SOUKOŠTĚ		9,74
6.02b	OKOUBA		14,61
6.03	BT	82,43	
6.03a	OKOUBA		5,81
6.03b	KOUPELNA		5,38
6.03c	LOŽNICE		9,83
6.03d	KUCHYNĚ		7,15
6.03e	SPRACOVÁNÍ POKOJ		39,37
6.03f	LOŽNICE		12,02
6.03g	KOUPELNA		7,86
6.04	BT	105,00	
6.04a	OKOUBA		12,88
6.04b	KOUPELNA		3,91
6.04c	KUCHYNĚ		8,52
6.04d	SPRACOVÁNÍ POKOJ		36,01
6.04e	LOŽNICE		13,81
6.04f	OKOUBA		3,85
6.04g	KOUPELNA		8,03
6.04h	LOŽNICE		18,20
6.05	BT	76,78	
6.05a	OKOUBA		11,47
6.05b	KOUBA		3,35
6.05c	KOUPELNA		4,41
6.05d	KUCHYNĚ		6,38
6.05e	SPRACOVÁNÍ POKOJ		30,47
6.05f	LOŽNICE		12,54
6.05g	KOUPELNA		7,96
6.06	BT	102,64	
6.06a	OKOUBA		8,47
6.06b	KOUPELNA		5,23
6.06c	LOŽNICE		18,83
6.06d	KOUPELNA		7,44
6.06e	LOŽNICE		19,45
6.06f	SPRACOVÁNÍ POKOJ, KUCHYNĚ		43,22
	CELKEM (bez výhledových sáhů)	416,89	
V1	VÝTAHOVÁ ŠACHTA	2,63	
V2	VÝTAHOVÁ ŠACHTA	2,93	
	TOTAL FLATS		366,85