



# Office building

2 135 m<sup>2</sup>, Prague 8, Libeň, Boudníkova

€ 18.50 - 19.50 / m<sup>2</sup> | CZK 466 - 491 / m<sup>2</sup>



**Office building****€ 18.50 - 19.50 / m<sup>2</sup> | CZK 466 - 491 / m<sup>2</sup>**2 135 m<sup>2</sup>, Prague 8, Libeň, Boudníkova

UNIT	AVAILABLE AREA	SERVICES	PARKING	MONTHLY RENT
Office space, 5th floor	611 m <sup>2</sup>	150 CZK monthly per m <sup>2</sup>	EUR 145 / ps / months	€ 18.50 / m <sup>2</sup>
Office space, 2nd floor	466 m <sup>2</sup>	150 CZK monthly per m <sup>2</sup>	EUR 145 / ps / months	€ 19.50 / m <sup>2</sup>
Sublease, Office space, 3rd + 4th floor + terrace	439 - 1 092 m <sup>2</sup>	160 CZK monthly per m <sup>2</sup>	EUR 135 / ps / months	€ 16 - 17 / m <sup>2</sup>

**Office building**2 135 m<sup>2</sup>, Prague 8, Libeň, Boudníkova**€ 18.50 - 19.50 / m<sup>2</sup> | CZK 466 - 491 / m<sup>2</sup>**

Service price	150 CZK monthly per m <sup>2</sup>
Total building area	13 658 m <sup>2</sup>
Tenant consumption	—
Parking	145 EUR
Parking service charges	—
Parking ratio	—
Certification	—
PENB	G
Reference number	27616

The six storey office building with office and retail premises for lease in Prague 8 - Libeň. Nearby subway station Palmovka (line B), together with tram and bus hubs, ensure easy access to other parts of Prague. Easy connection to the Prague ring and to the D8, D10 and D11 highways.

**Features and Services:**

24/7 Security / Reception  
Raised floors with floor boxes and electricity sockets  
HVAC  
Suspended ceiling with installed lighting  
Connection points for data and telephone cabling  
Openable windows, blinds  
Installation points for kitchenette  
Warehouse space  
Underground parking

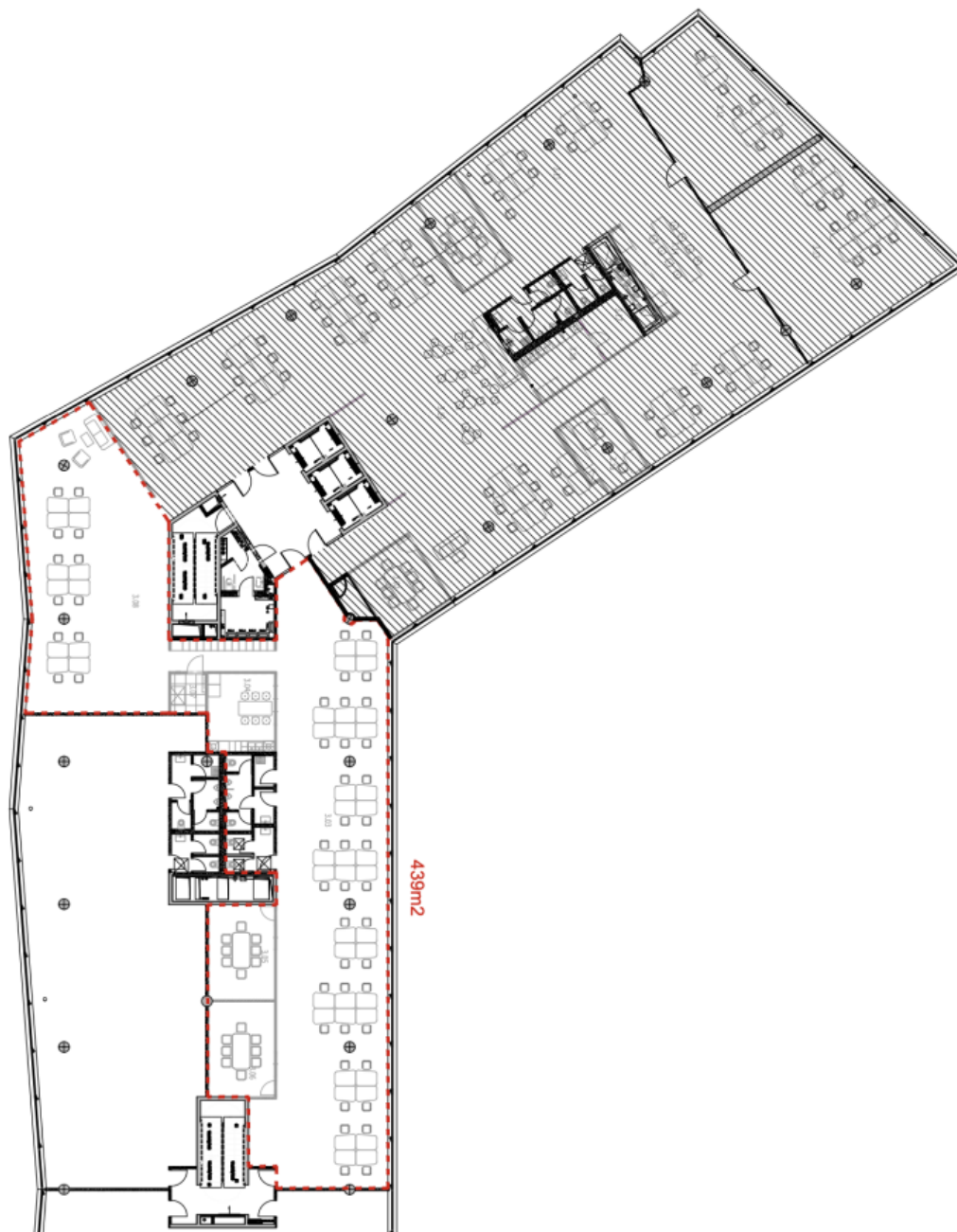
Rental and service charges listed without VAT. Lessee pays no commission.



## Office building

2 135 m<sup>2</sup>, Prague 8, Libeň, Boudníkova

€ 18.50 - 19.50 / m<sup>2</sup> | CZK 466 - 491 / m<sup>2</sup>





# Office building

2 135 m<sup>2</sup>, Prague 8, Libeň, Boudníkova

€ 18.50 - 19.50 / m<sup>2</sup> | CZK 466 - 491 / m<sup>2</sup>

