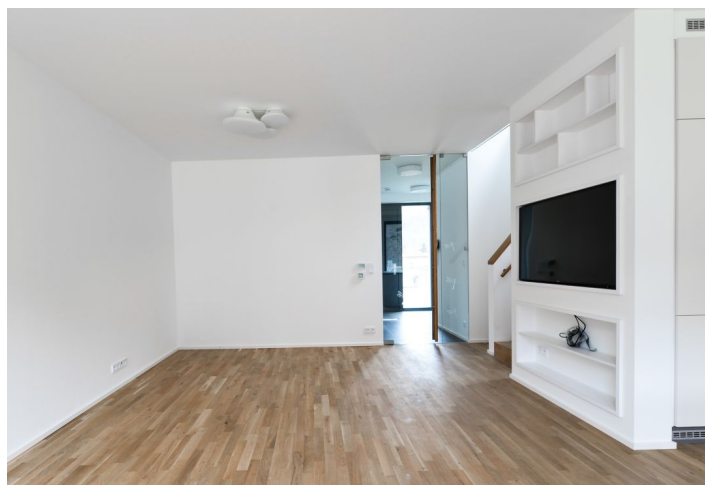




House Four-bedroom (5+kk)

Rented

186 m², Prague 6, Dejvice, V Šáreckém údolí





House Four-bedroom (5+kk)

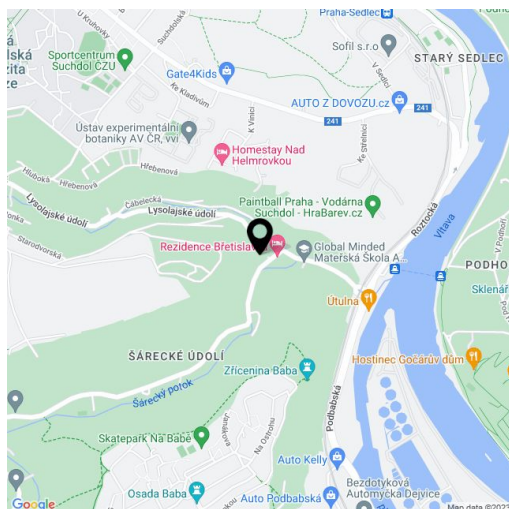
Rented186 m², Prague 6, Dejvice, V Šáreckém údolí

Plot	278 m ²
Foot print	84 m ²
Garden	194 m ²
Parking	Double garage.
Garage	Yes
Cellar	Yes
PENB	A
Reference number	27658
Available from	Immediately

High standard 4-bedroom 3-bathroom low energy townhouse - part of the TOP RESIDENCE project with interiors designed by the Olgoj Chorchoj studio, situated in the charming Šárecké Valley surrounded by green hills and peaceful countryside. Good connection to the city center, the airport and international schools in Prague 6, convenient to Dejvická metro station with full amenities in the area. Just steps to Global Concept Montessori School, and five min. to the ISP School.

The ground floor features living room with dining area, a fully fitted open kitchen and access to the terrace and **garden**, guest bedroom, guest bathroom (walk-in shower, toilet), and entry hall with built-in wardrobes. The first floor offers three bedrooms - master bedroom with en-suite bathroom (bath, bidet, toilet), family bathroom (walk-in shower, toilet), and a balcony accessible from two bedrooms. All bedrooms have **built-in wardrobes**. The basement floor includes a playroom / wellness room with garden access, laundry room, utility room, and garage access.

Wooden floors, tiles, large format French windows, automatic outdoor blinds, gas boiler, washer, dryer, dishwasher, TV, video entry phone, alarm, central vacuum cleaner. **Double garage**, automatic garage gate, 24-hour security, social club and a children's playground. There is a number of cycling and jogging paths in the area. Deposit for community charges and water around CZK 8,000 per month. Electricity and gas will be transferred to the tenant. Available from the mid of July 2021.





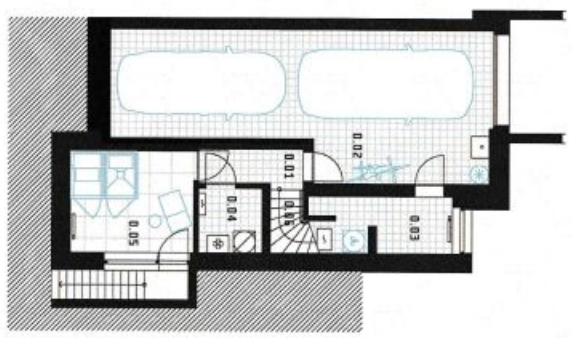
House Four-bedroom (5+kk)

Rented

186 m², Prague 6, Dejvice, V Šáreckém údolí

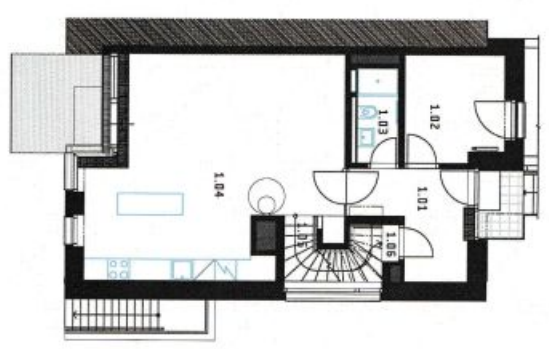
A * 5+kk * 185,8 m² [nízkoenergetický dům * low energy house]
Energetický štítek A - mimořádně úsporná, podle certifikátu energetické náročnosti budov (PENB).
Energy label A - exceptionally efficient, according to the energy performance of buildings certificate.

top residence
ŠÁRECKÉ ÚDOLÍ - PRAHA 6



SUTEREN | UNDERGROUND

0.01	chodba corridor	3,1
0.02	garáž garage	37,7
0.03	domácí prádelna workroom	6,3
0.04	technická místnost utility room	3,4
0.05	fitness / sauna	10,0
0.06	schodiště hall, staircase	3,6
UŽITNÁ PLOCHA USABLE FLOOR AREA		64,1



1. PATRO | 1ST FLOOR

1.01	hala hall	8,2
1.02	pokoj pro hosta guest room	8,2
1.03	koupelna bathroom	3,2
1.04	obývací pokoj + hl living room + Hk	39,3
1.05	schodiště staircase	4,1
1.06	chodba corridor	0,6
UŽITNÁ PLOCHA USABLE FLOOR AREA		63,5
TERASA TERRACE		7,5
ZAVĚTRÍ LEE		2,3



2. PATRO | 2ND FLOOR

2.01	chodba corridor	6,7
2.02	ložnice rodičů masterbedroom	14,5
2.03	ložnice dětí bedroom children	12,4
2.04	ložnice dětí bedroom children	13,6
2.05	koupelna bathroom	4,3
2.06	šatna, skříň closet, storage	3,3
2.07	koupelna bathroom	3,8
UŽITNÁ PLOCHA USABLE FLOOR AREA		58,4
BALKÓN BALCONY		1,8