



Apartment One-bedroom (2+kk)

Rented

62 m², Praha 10, Vršovice, Donská





Apartment One-bedroom (2+kk)

Rented

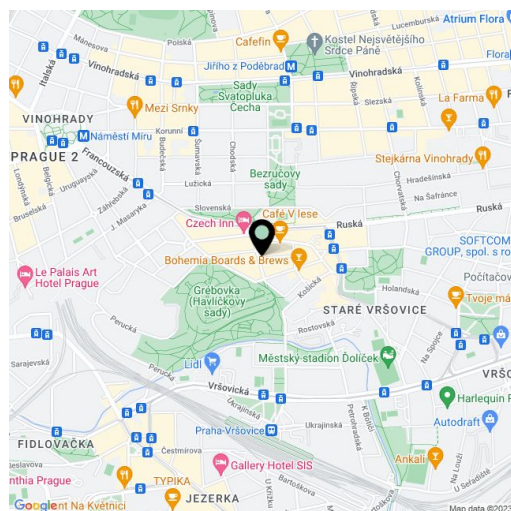
62 m², Praha 10, Vršovice, Donská

Total area	62 m ²
Parking	Garage parking.
Garage	Yes
Cellar	Yes
PENB	B
Reference number	27736
Available from	Immediately

Brand new 1-bedroom flat situated on the fourth floor of a new building with a lift and parking. Located on the border of Vinohrady and Vršovice neighborhoods, just two minutes from the Havlíčkovy sady park, with easy connection to the city center, two short tram stops from Náměstí Míru metro station with full amenities in the area.

The interior includes a spacious living room with a fully fitted open kitchen and dining area, one bedroom, bathroom with tub and toilet, and entry hall.

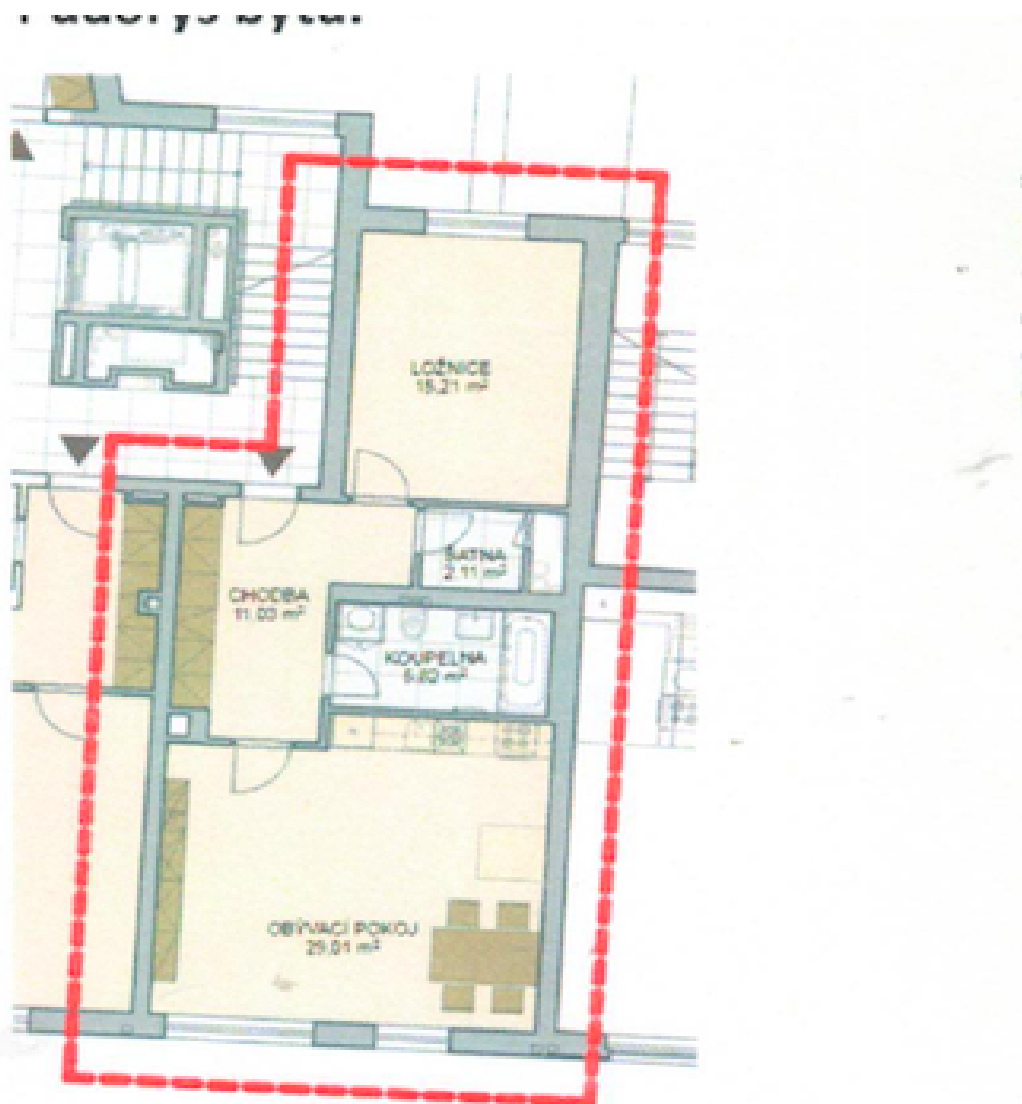
Vinyl and tile floors, security entry door, built-in wardrobes, wooden triple glazed windows, remote control operated outdoor blinds, washer, dryer, dishwasher, microwave oven, video entry phone, Internet, alarm, central switch, cellar. Chip operated entrance to the building and lift. One garage parking space included. Common building charges CZK 2500/month. Deposit for heating, water and electricity CZK 3000/month. The photos are taken from a similar apartment. Available from January 2018.



* Area of the unit according to the Civil Code. The area consists of the sum total area of the entire unit bounded by perimeter walls.



Apartment One-bedroom (2+kk)

Rented62 m², Praha 10, Vršovice, Donská

Legenda místností:

Chodba	11,03 m ²
Koupelna	5,82 m ²
Šatna	2,11 m ²
Ložnice	15,21 m ²
Obývací pokoj	29,01 m ²
Celkem	70,25 m²

K bytu patří parkovací stání a sklep ve 2. PP