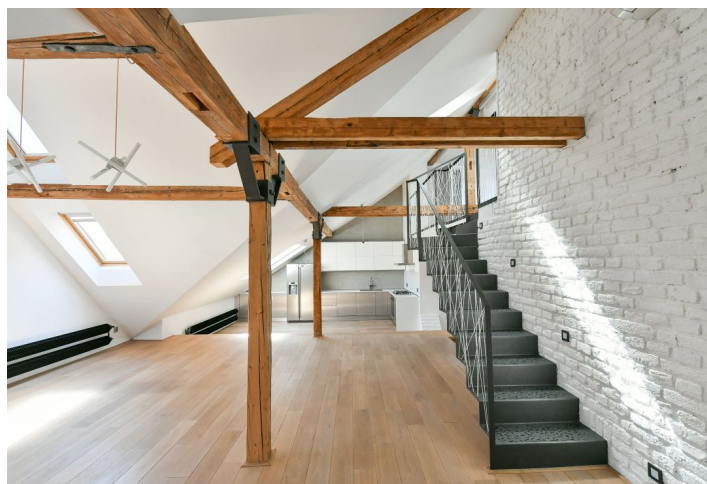




Apartment Three-bedroom (4+kk)

Rented

192 m², Prague 6, Bubeneč, Jaselská





Apartment Three-bedroom (4+kk)

Rented

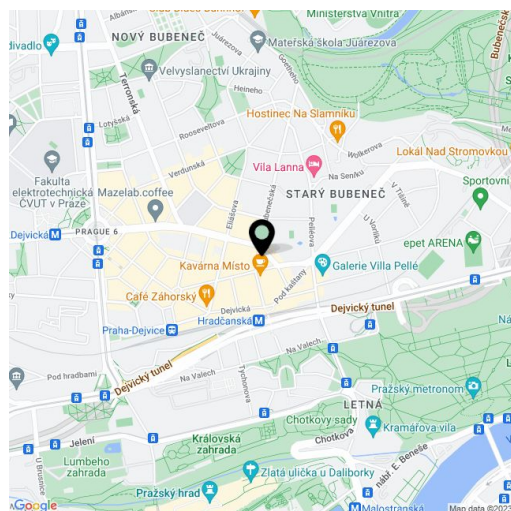
192 m², Prague 6, Bubeneč, Jaselská

Total area	225 m ²
Floor area*	192 m ²
Terrace	33 m ²
Parking	Possibility to rent a parking space nearby.
Cellar	Yes
PENB	G
Reference number	27754
Available from	Immediately

Unfurnished 3-bedroom 3-bathroom split-level attic flat with terrace and panoramic views of the city including the nearby Prague Castle. Beautifully located in a highly sought-after green residential neighborhood in Prague 6, boasting many foreign embassies. Set just a one-minute walk from the Hradčanská metro station and complete amenities, within walking distance of the Prague Castle and the Stromovka and Letenské sady Parks. Convenient access to the airport and numerous international schools.

The first level consists of a large open space living room with a **fireplace**, fully equipped kitchen and dining area, from which we can access 2 bedrooms, 2 bathrooms (one of them walk-through with bathtub, shower and toilet), closet and also stairs leading to the gallery. The upper floor features the last bathroom, guest room, and a smaller room with spacious built-in wardrobes. Straight from the gallery we enter **the terrace and elevated platform** with beautiful views of the city, Jaselská Street and a courtyard with mature trees.

Amenities include a **"smart home" system** controlled from iPhone (for example lighting, blinds, etc.), air-conditioning, wooden floors, american style fridge, gas cooker, cellar. Common building charges and energy CZK 9,000/month.



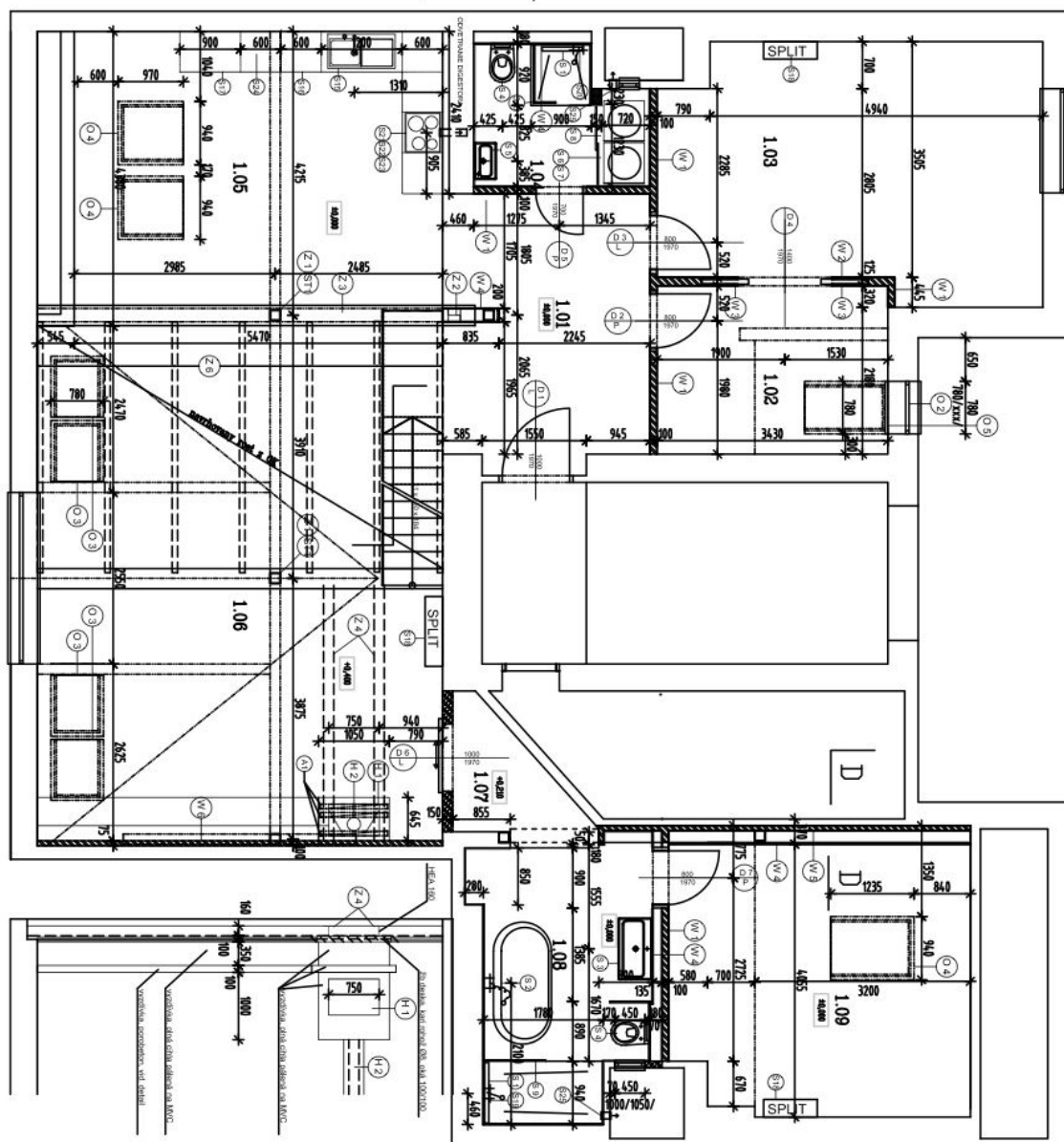
* Area of the unit according to the Civil Code. The area consists of the sum total area of the entire unit bounded by perimeter walls.



Apartment Three-bedroom (4+kk)

Rented

192 m², Prague 6, Bubeneč, Jaselská

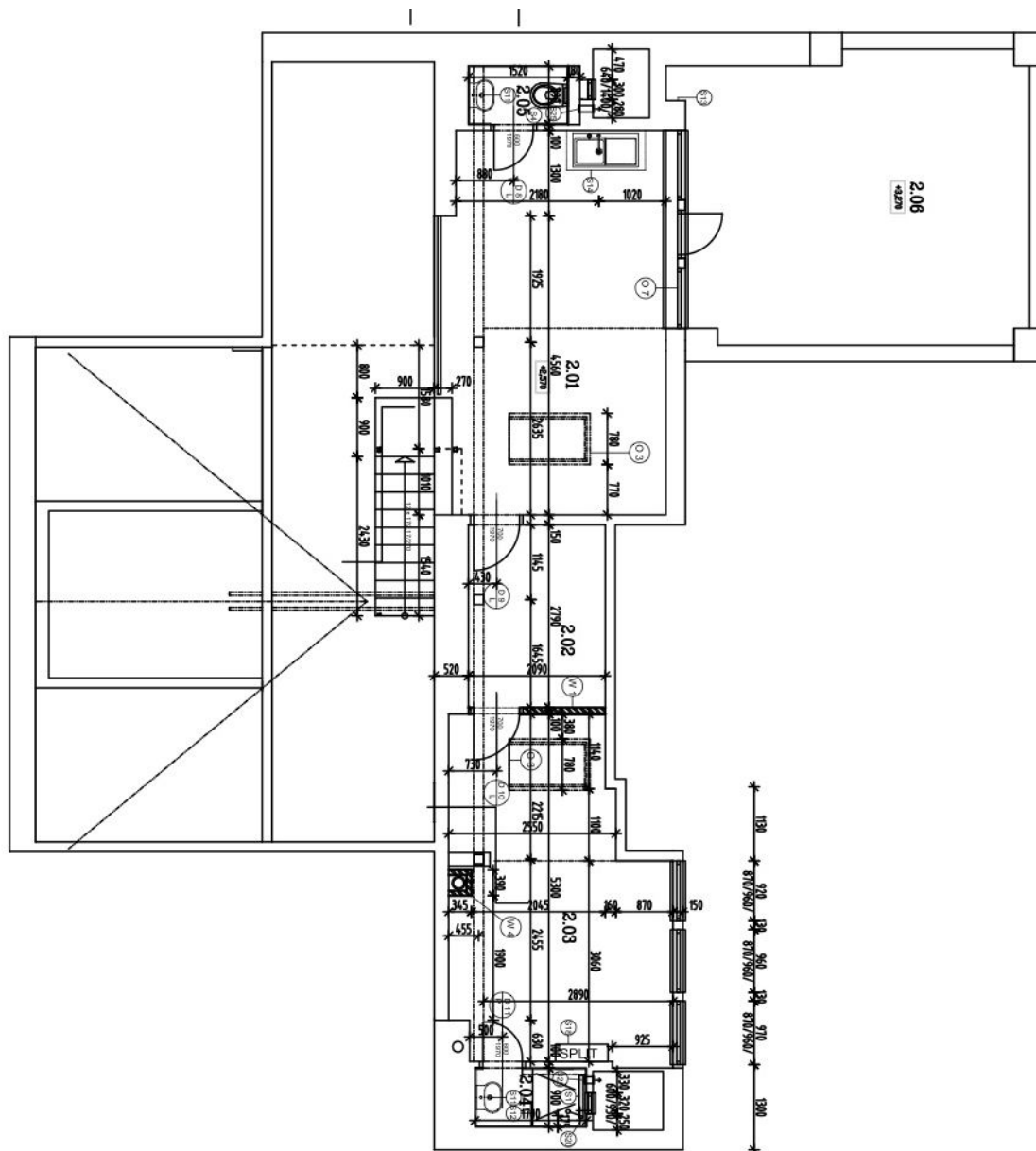




Apartment Three-bedroom (4+kk)

Rented

192 m², Prague 6, Bubeneč, Jaselská

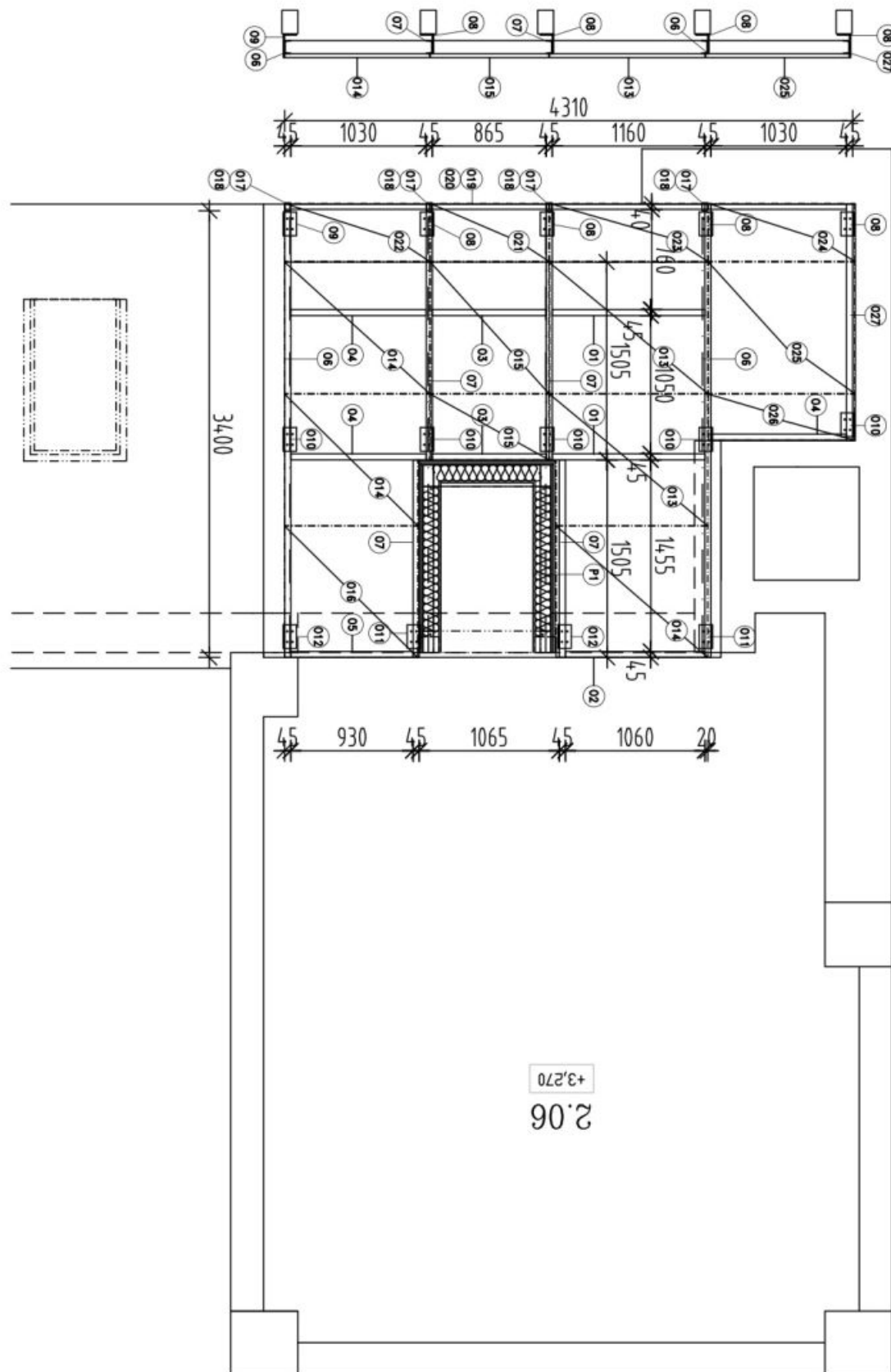




Apartment Three-bedroom (4+kk)

192 m², Prague 6, Bubeneč, Jaselská

Rented

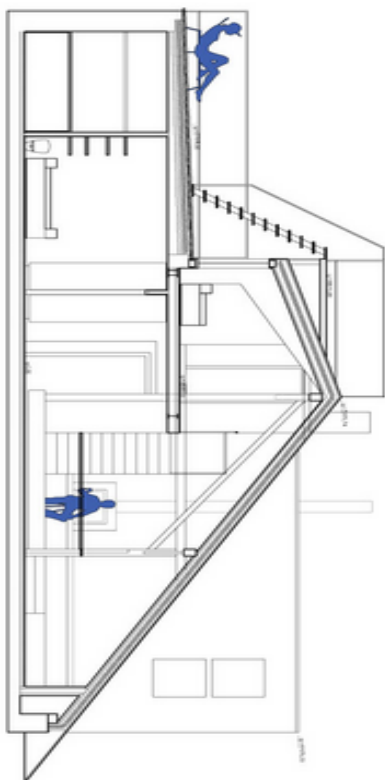




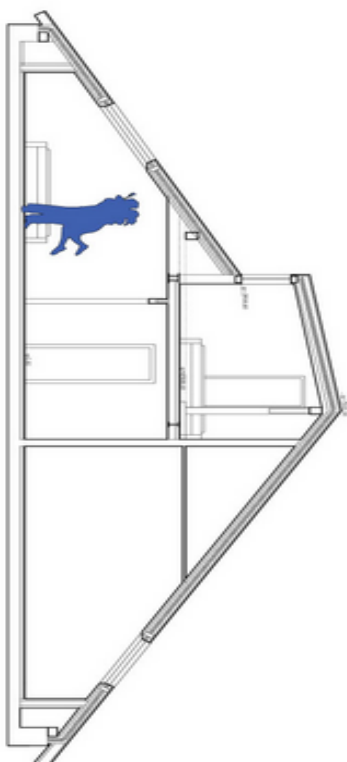
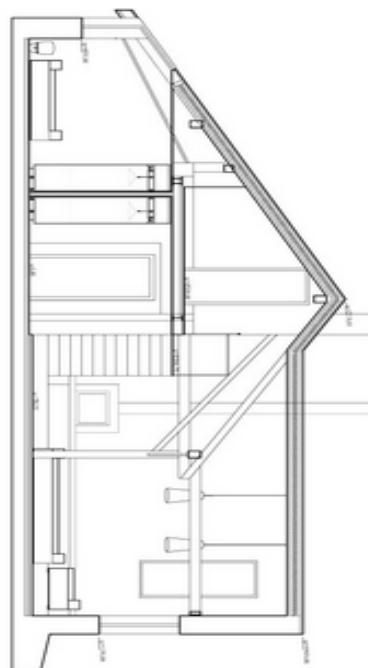
Apartment Three-bedroom (4+kk)

Rented

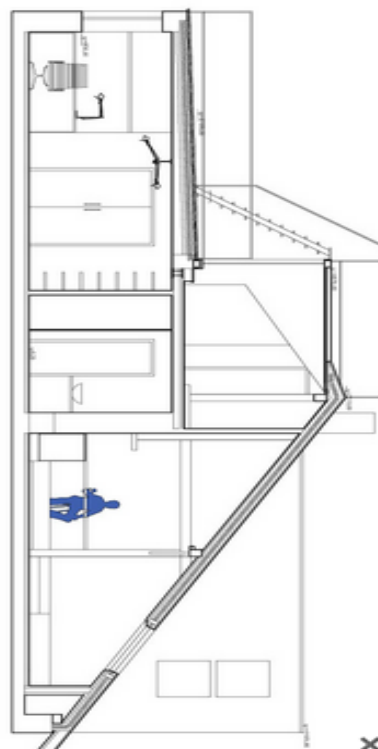
192 m², Prague 6, Bubeneč, Jaselská



Section A - A



Section C - C

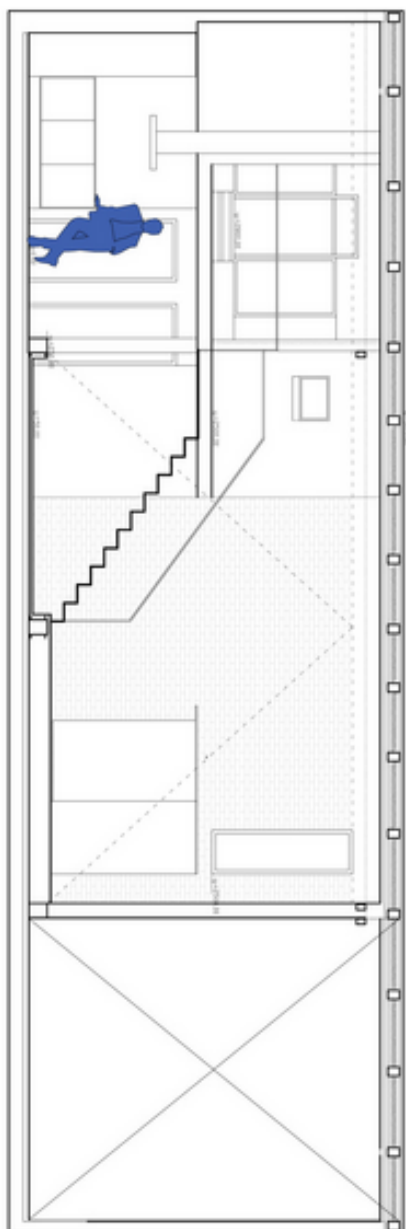




Apartment Three-bedroom (4+kk)

Rented

192 m², Prague 6, Bubeneč, Jaselská



Section E - E

