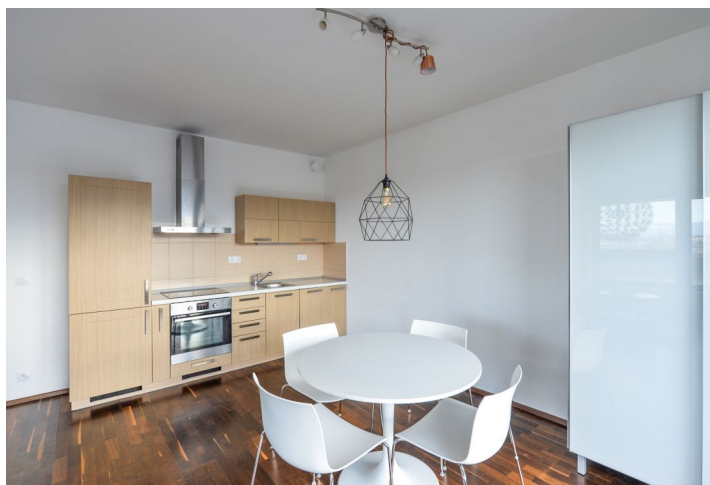




## Apartment Two-bedroom (3+kk)

Rented

70 m<sup>2</sup>, Prague 7, Holešovice, U Uranie





## Apartment Two-bedroom (3+kk)

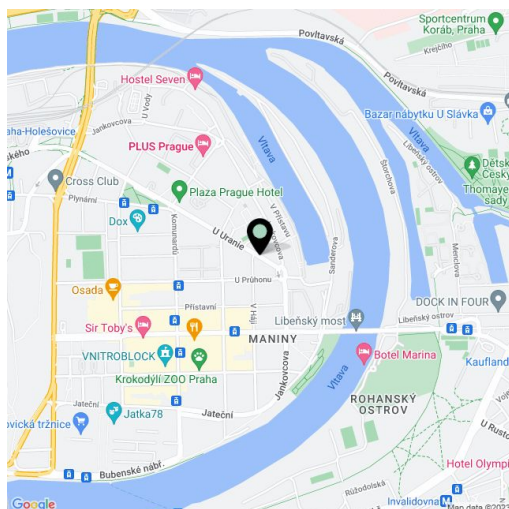
**Rented**70 m<sup>2</sup>, Prague 7, Holešovice, U Uranie

Total area	78 m <sup>2</sup>
Floor area*	70 m <sup>2</sup>
Terrace	8 m <sup>2</sup>
Parking	Garage parking.
Garage	Yes
Cellar	-
PENB	G
Reference number	27757
Available from	Immediately

**Modern furnished 2-bedroom flat with an 8 m<sup>2</sup> terrace and far reaching views of Prague on the ninth floor of the "Tower Building" in the Holešovice Brewery residential project. Quiet location near the Vltava river, with full amenities within easy reach, a few minute walk to a golf course and tennis courts. Quick connection to the city center - trams or metro line C, Nádraží Holešovice and Vltavská.**

The interior includes living room with a fully fitted open kitchen and access to the terrace, two separate bedrooms, bathroom with bath and sink, a separate toilet with sink, and entry hall.

**Wooden floors**, tiles, security entry door, large windows, blinds, central heating, dishwasher, washing machine, garden furniture, **cellar**, lift, chip entry to the building. One underground **garage parking** space included. Common building charges, water and heating around CZK 4000/month. Electricity will be transferred to the tenant. Available from March 2021.



\* Area of the unit according to the Civil Code. The area consists of the sum total area of the entire unit bounded by perimeter walls.