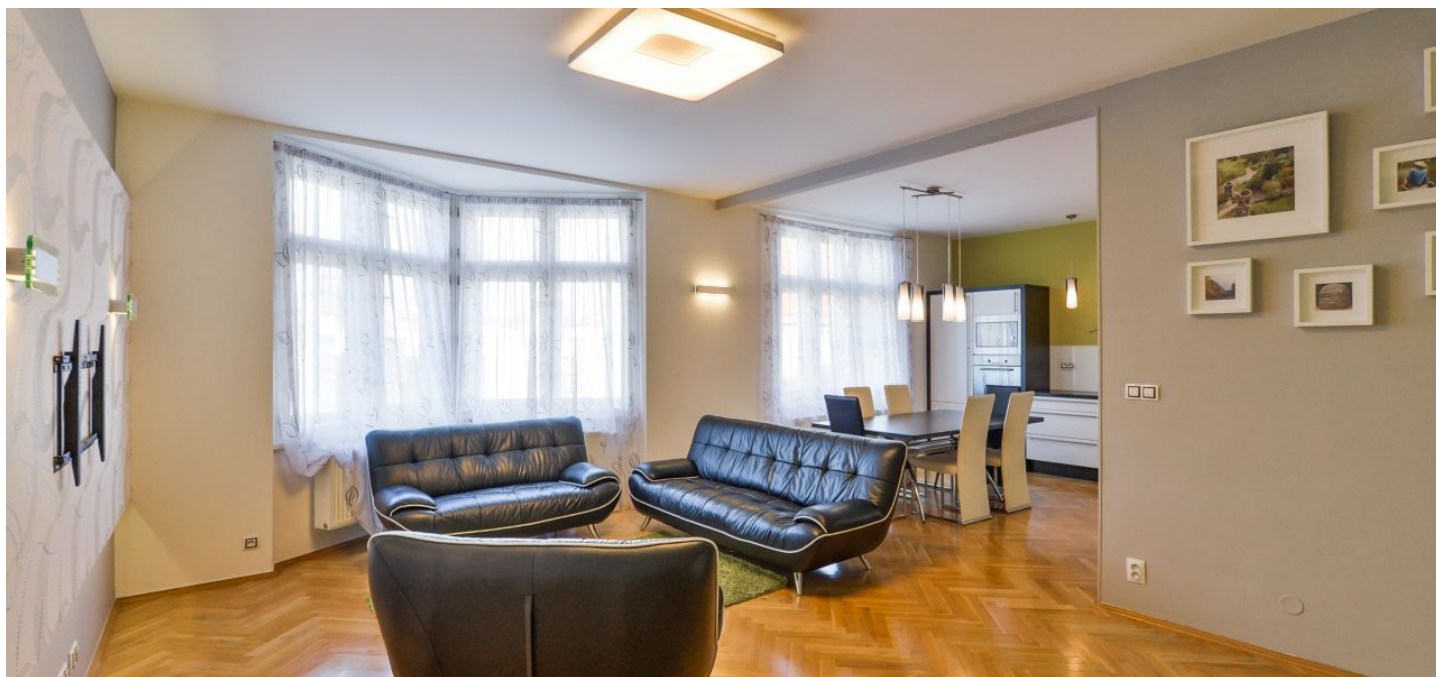




Apartment Two-bedroom (3+kk)

Sold

103 m², Prague 6, Bubeneč, Verdunská





Apartment Two-bedroom (3+kk)

Sold103 m², Prague 6, Bubeneč, Verdunská

Total area	105 m ²
Floor area*	103 m ²
Balcony	2 m ²
Parking	-
Cellar	-
Service price	3 750 CZK monthly
PENB	D
Reference number	27832

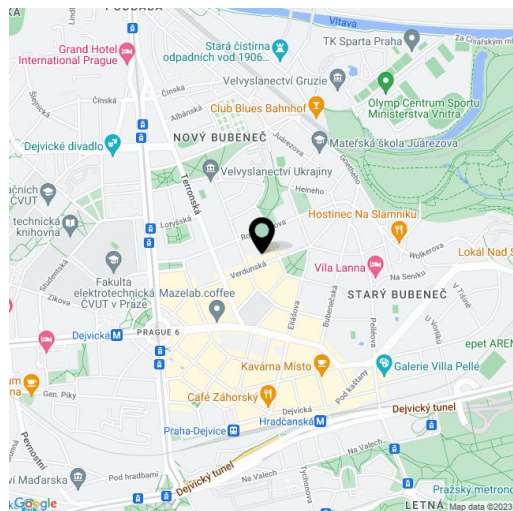
Spacious apartment just a short walk from the Dejvická metro station, housed in a well-kept 1930 house with a lift in the sought-after part of Prague 6 - Bubeneč. All services needed for comfortable living are within walking distance.

The layout of the 2nd-floor apartment features a bright living room with a **glassed-in oriel**, a partly separate fully equipped kitchen with a dining area and a large window. There are also **2 bedrooms facing southeast into the courtyard with greenery** (a balcony adjoins 1 bedroom), bathroom with bathtub and 2 sinks, separate toilet, utility room and spacious hallway.

The apartment features originally **new oak parquet** in the living rooms (**heated floor tiles** in the bathroom), new casement windows, original copies (in the direction of the street), built-in wardrobes and bedrooms, Baumatic built-in kitchen appliances.

The location has excellent transport availability, the **Dejvická (A)** metro station, trams and bus stops are only a few steps from the house. All services nearby: supermarket, pharmacy, ATMs, cafes, restaurants, post office, schools of all levels, including a university campus and 3 theaters. Perfect area for neighborhood strolls - especially through the diplomatic quarter that leads to **Stromovka** - the largest park in Prague.

Interior 103 m², balcony 1.5 m².



* Area of the unit according to the Civil Code. The area consists of the sum total area of the entire unit bounded by perimeter walls.



Apartment Two-bedroom (3+kk)

103 m², Prague 6, Bubeneč, Verdunská

Sold

