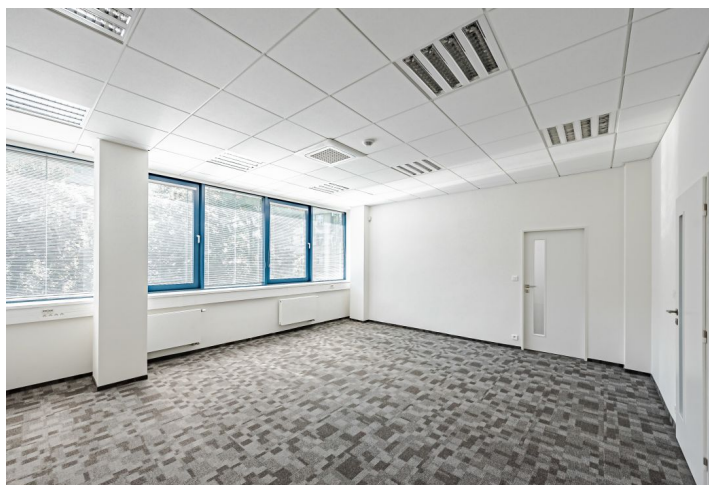




# Office building

Prague 7, Holešovice, U Pergamenky

Rented



**Office building**

Prague 7, Holešovice, U Pergamenky

**Rented**

Service price	70 CZK monthly per m <sup>2</sup>
Total building area	4 078 m <sup>2</sup>
Tenant consumption	—
Parking	1 500 CZK
Parking service charges	—
Parking ratio	—
Certification	—
PENB	C
Reference number	27903

**Eight-story administrative building with office space for lease situated in Prague 7 – Holešovice with renovated common areas on the ground floor.**

**Location:**

The building is easily accessible by car and public transport – within walking distance of the Nádraží Holešovice metro station (line C), close to tram stops and a number of primary transportation routes, including access to the D1 and D8 highways.

**Features and Services:**

Openable windows  
 Load-bearing carpets - carpet squares 500x500  
 SDK system raster ceiling  
 LED luminaires system in raster ceiling and specification according to luminaire book, 500 LUX lighting at table top height  
 Air conditioning  
 Heating - radiators  
 Internal horizontal blinds  
 EZS basic (without cameras), ACS module at the entrance, SGK  
 1x kitchenette  
 2 parking spaces

Rental and service charges listed without VAT. Lessee pays no commission.

