



## Apartment Three-bedroom (4+kk)

Rented

128 m<sup>2</sup>, Prague 1, Nové Město, Jungmannova





## Apartment Three-bedroom (4+kk)

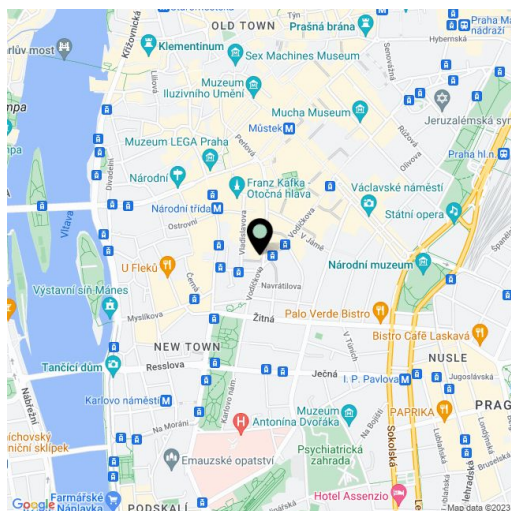
**Rented**128 m<sup>2</sup>, Prague 1, Nové Město, Jungmannova

Total area	128 m <sup>2</sup>
Parking	-
Cellar	-
PENB	G
Reference number	27990
Available from	Immediately

Spacious apartment in a unique Neo-Renaissance building, part of the so called "Hlávka buildings" from 1887-98, built by a renown Czech architect Josef Fanta for a prominent Czech philanthropist Josef Hlávka. This brand new fully reconstructed fully air-conditioned 3-bedroom 2-bathroom flat with preserved original details is situated on the third floor of a renovated historic palace with a grand interior. Located in a prime central area with full amenities and instant access to metro and multiple tram links.

The interior features a large living room with a fully fitted open kitchen and dining area, two bedrooms with a shared bathroom with a walk-in shower and toilet (one of the bedrooms is walk-through), and one more bedroom with bay windows. There is also a family bathroom (walk-in shower, toilet), utility room, and entrance hall.

**High ceilings**, large windows, **solid wood parquet floors**, tiles, gas boiler, dishwasher, microwave oven, lift. Common building charges and water CZK 600/person/month. Gas and electricity will be transferred to the tenant.



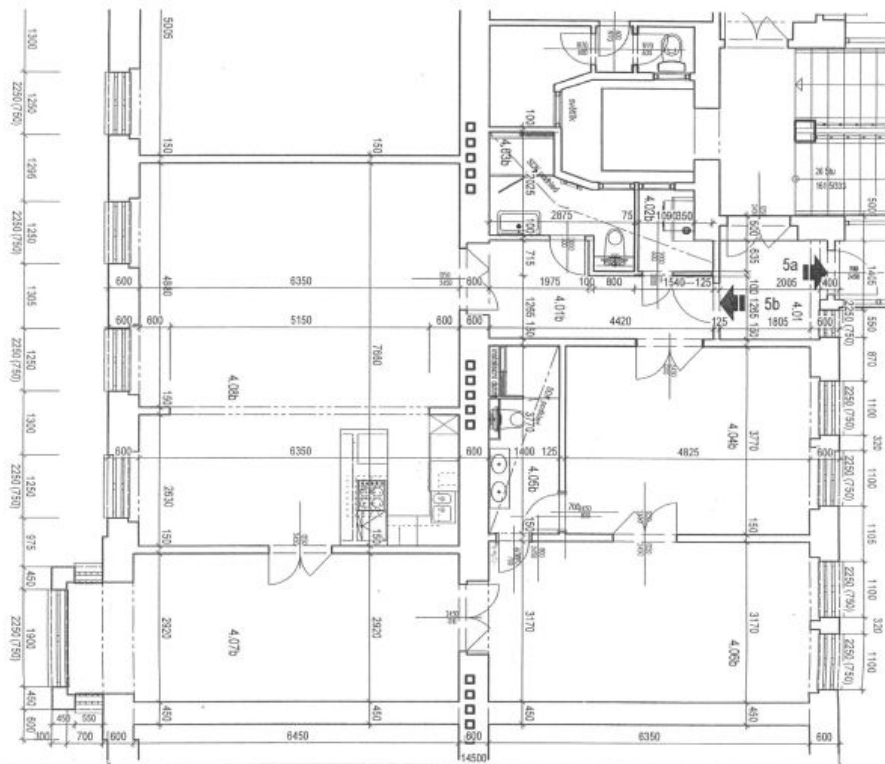
\* Area of the unit according to the Civil Code. The area consists of the sum total area of the entire unit bounded by perimeter walls.



# Apartment Three-bedroom (4+kk)

128 m<sup>2</sup>, Prague 1, Nové Město, Jungmannova

Rented



## LEGENDA MÍSTNOSTI

Č. M.	NÁZEV MÍSTNOSTI	PLOCHA	NAŠLAP Vrstva	STĚNY	STROP
4.01	Společná předstih	4.12 m <sup>2</sup>	Výšy	malba Primalex	malba Primalex
4.01b	Předstih	7.39 m <sup>2</sup>	Výšy	malba Primalex	malba Primalex
4.02b	Techn. místnost	1.74 m <sup>2</sup>	Dlažba	Bálinový obklad malba Primalex	malba Primalex
4.03a	Lázeň+WC	4.48 m <sup>2</sup>	Dlažba	Bálinový obklad malba Primalex	malba Primalex
4.04b	Ložnice	18.48 m <sup>2</sup>	Výšy	malba Primalex	malba Primalex
4.05b	Lázeň	5.36 m <sup>2</sup>	Dlažba	Bálinový obklad malba Primalex	malba Primalex
4.06b	Pokoj	19.92 m <sup>2</sup>	Parkey	malba Primalex	malba Primalex
4.07b	Pokoj	21.68 m <sup>2</sup>	Parkey	malba Primalex	malba Primalex
4.08b	Obývací pokoj + KK	48.48 m <sup>2</sup>	Parkey	malba Primalex	malba Primalex

JUNGMANNOVA

Celková rozloha bytu: 127,50 m<sup>2</sup>