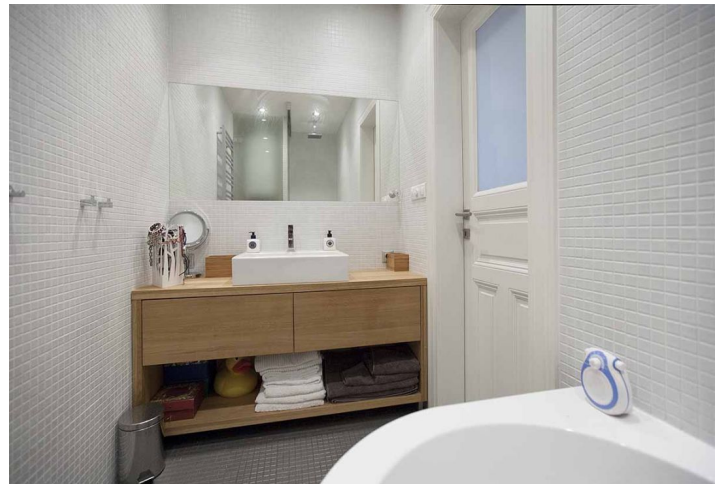
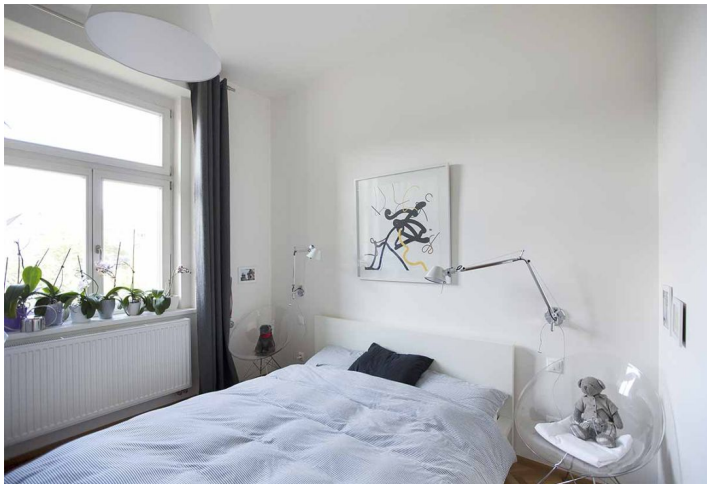




## Apartment One-bedroom (2+kk)

67 m<sup>2</sup>, Praha 6, Bubeneč, Jaselská

Sold





## Apartment One-bedroom (2+kk)

**Sold**67 m<sup>2</sup>, Praha 6, Bubeneč, Jaselská

Total area	67 m <sup>2</sup>
Parking	-
Cellar	Yes
PENB	G
Reference number	28074

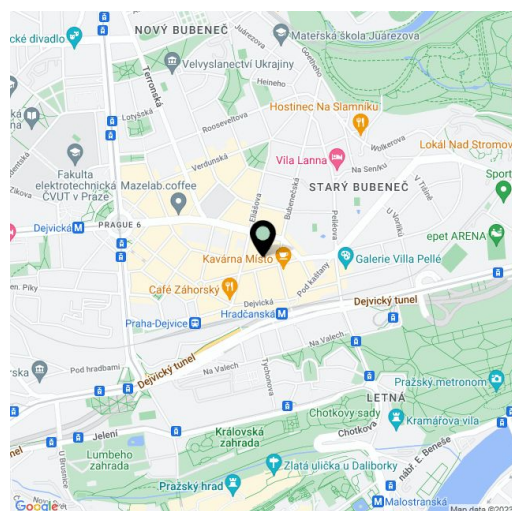
This completely refurbished and well furnished flat situated on the fourth floor of an apartment building with a lift is located in a popular residential neighborhood, with all amenities nearby. Attractive location close to the Prague Castle, Stromovka and Letná.

The layout features a **south-eastern living room** with kitchen and dining area, 1 bedroom (with a storage room) which is oriented to the green courtyard, a **large equipped walk-in closet**, bathroom with bathtub, separate toilet and an entrance hall.

The interior includes high-ceilings, **new oak parquet flooring**, underfloor heating in the bathroom and toilet, **Gustavsberg** and **Laufen** sanitary facilities, Butterfly Mosaic Tile, P. M.H bathroom radiator, AEG washing machine with a drier, glass screen and door. High-quality lighting from the **Artemide**, **Prolicht** and **Flos** brands. Kitchen unit with glass tiles and Bosch appliances (including a wine fridge). The heating is provided by the new Junkers gas boiler, entrance door from the NEXT brand. The purchase price also includes some furniture (it does not fully correspond to photos) and an **large cellar**.

The house is situated on a tree-lined street in the popular area of Prague 6 - Bubeneč, close to the **Hradčanská** tram and metro stations. Several theaters, shops and restaurants, full civic amenities, close proximity to greenery, quick access to the center and a great connection to the airport. Traveling in and out of Prague is facilitated by close access to the Blanka tunnel.

Interior 67 m<sup>2</sup>.



\* Area of the unit according to the Civil Code. The area consists of the sum total area of the entire unit bounded by perimeter walls.



# Apartment One-bedroom (2+kk)

67 m<sup>2</sup>, Praha 6, Bubeneč, Jaselská

Sold

