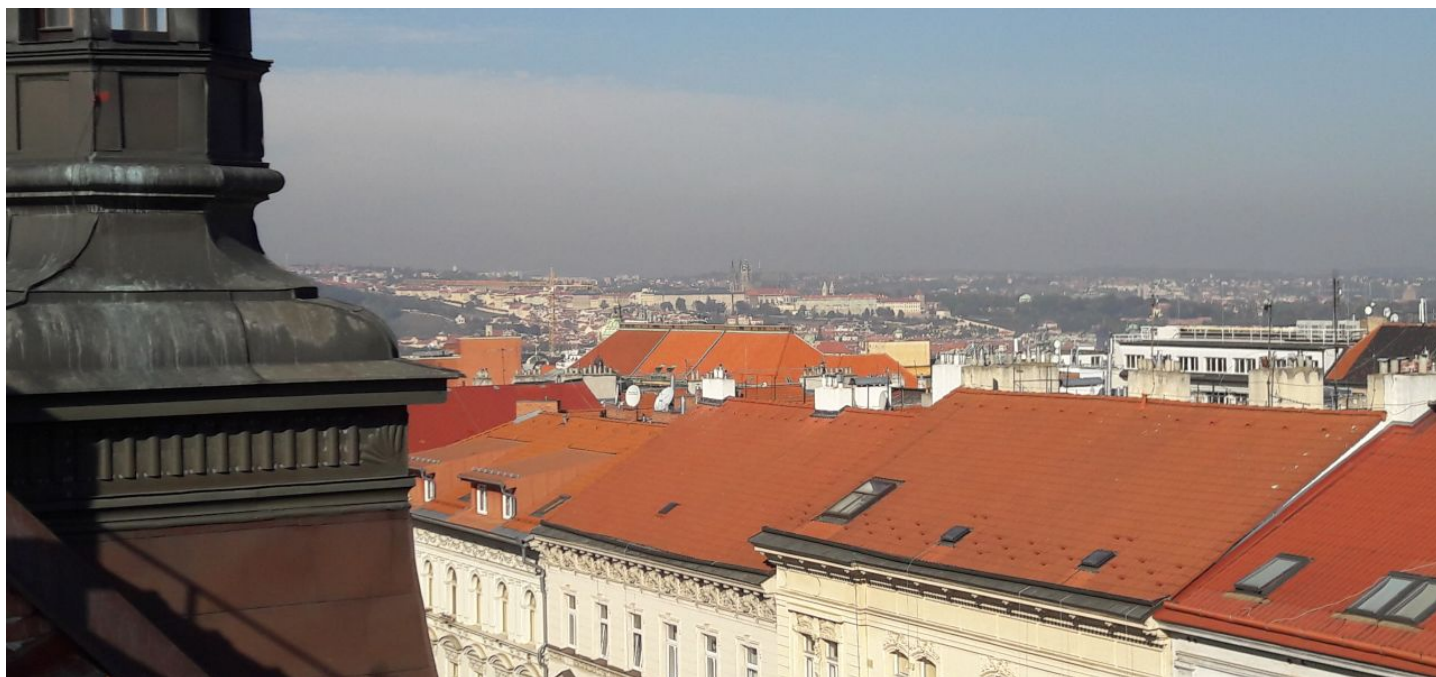




Apartment Three-bedroom (4+kk)

Sold

124 m², Prague 2, Vinohrady, Korunní





Apartment Three-bedroom (4+kk)

Sold124 m², Prague 2, Vinohrady, Korunní

Total area	139 m ²
Floor area*	124 m ²
Terrace	15 m ²
Parking	-
Cellar	Yes
PENB	G
Reference number	28081

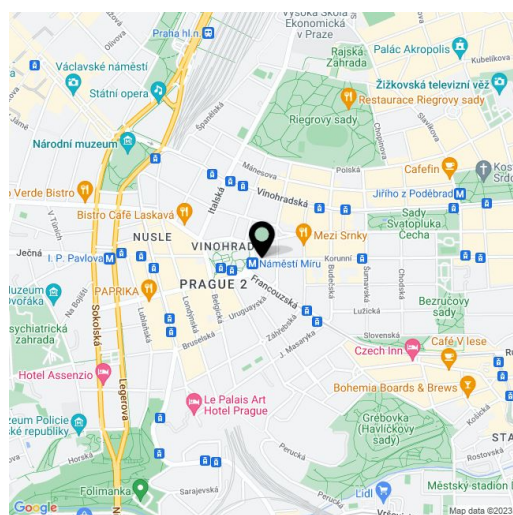
Newly emerging split-level attic flat with a terrace, set on the 6th and 7th floors of a residential building situated close to Svatopluk Čech Orchards. Attractive residential area, just a few stepsw from the tram stop Šumavská. Construction is scheduled for Q1 2018 - Q1 2019.

The lower floor will consist of 3 bedrooms, 2 bathrooms, a separate toilet, walk-in closet and an entry hall. The layout of the upper floor will offer a spacious living room (52 m²) with kitchen and dining area with access to the **terrace**, and a separate toilet with a sink.

The standard equipment of the apartment will include Quick Parquet two-layer oak floors, Impronta Italgraniti large format tiles, Schuco aluminum sliding glass walls and skylights with triple-glazing, Sapeli **interior doors with concealed hinges**, NEXT entrance door of highest security level, Baxi gas boiler, quality bathroom fixtures (e.g. Laufen, Grohe), audio entry phone, preparation for air-conditioning, white plasters, suspended plasterboard ceilings. **The purchase price includes a cellar.** The reconstruction of the common areas and the construction of the elevator will take place with the construction of the apartment.

Popular residential area within easy reach of downtown and within walking distance of Riegrovy sady. Full civic amenities in the area.

Interior 124.70 m², terrace 14.70 m².



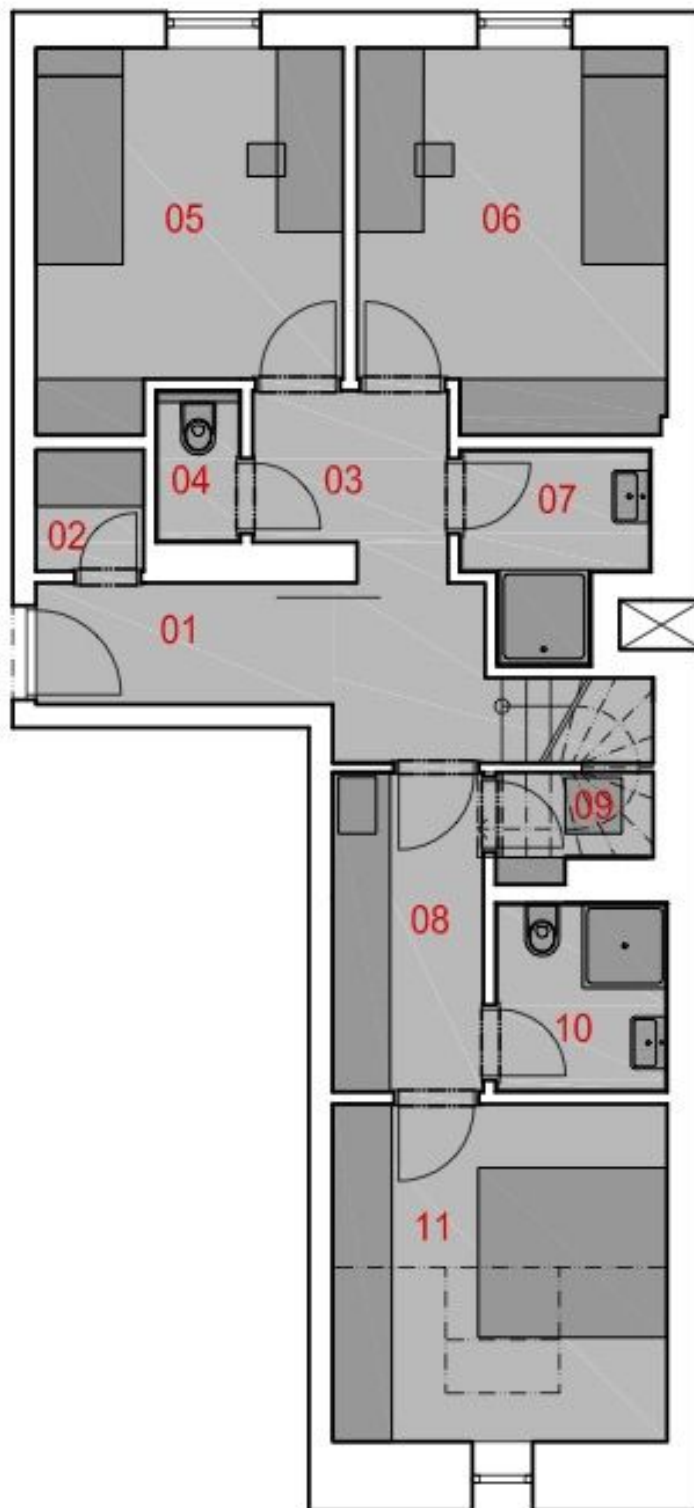
* Area of the unit according to the Civil Code. The area consists of the sum total area of the entire unit bounded by perimeter walls.



Apartment Three-bedroom (4+kk)

Sold

124 m², Prague 2, Vinohrady, Korunní

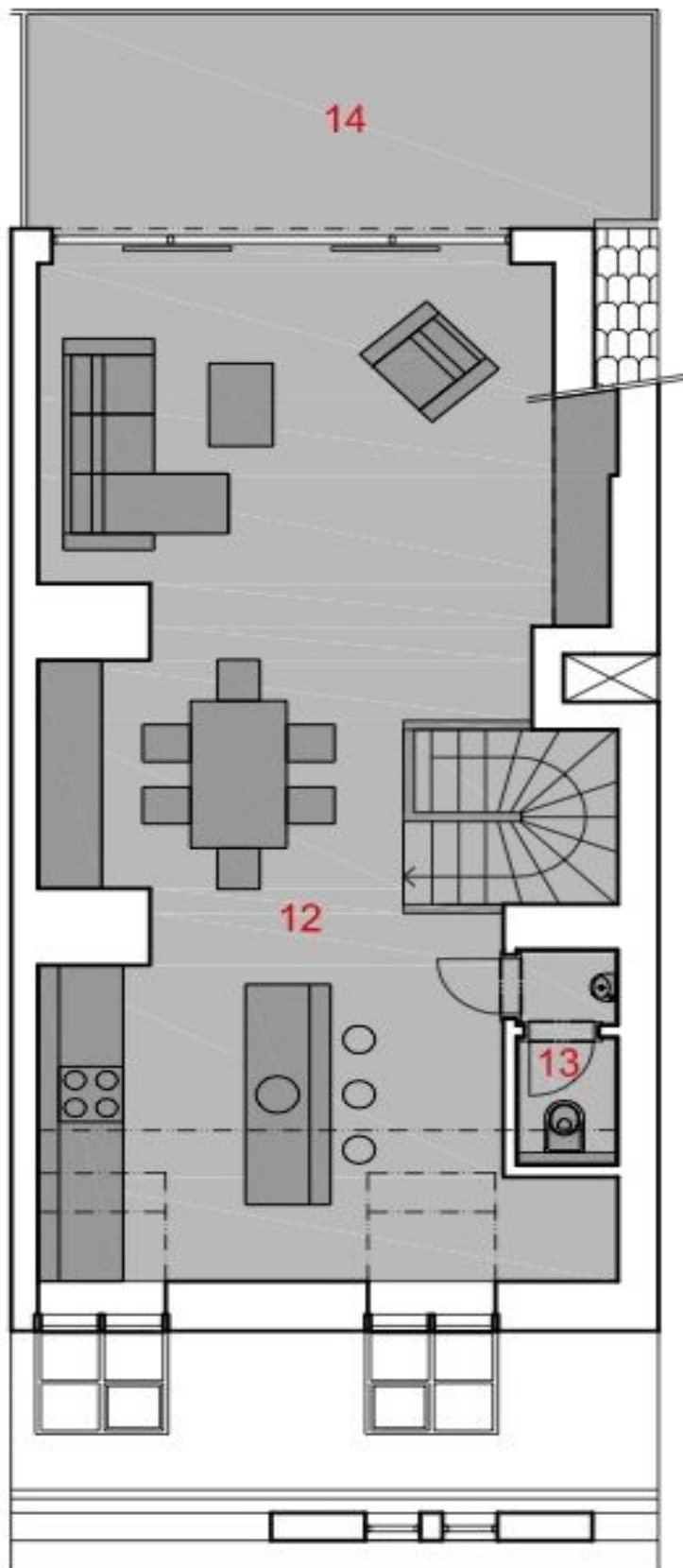




Apartment Three-bedroom (4+kk)

Sold

124 m², Prague 2, Vinohrady, Korunní





Apartment Three-bedroom (4+kk)

Sold

124 m², Prague 2, Vinohrady, Korunní

