



## Apartment Three-bedroom (4+1)

Rented

159 m<sup>2</sup>, Prague 5, Motol, Brdlikova





## Apartment Three-bedroom (4+1)

Rented

159 m<sup>2</sup>, Prague 5, Motol, Brdlikova

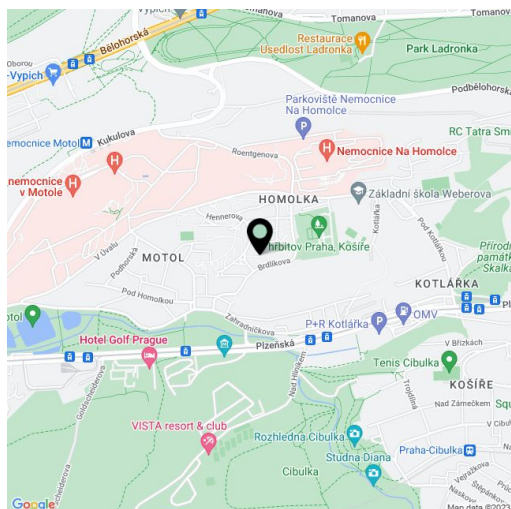
Total area	167 m <sup>2</sup>
Floor area*	159 m <sup>2</sup>
Balcony	8 m <sup>2</sup>
Parking	2 parking spaces included.
Garage	Yes
Cellar	Yes
PENB	C
Reference number	28164
Available from	Immediately

This duplex 3-bedroom 2-bathroom flat with a balcony and stunning green views is located on the 4th and 5th floors of an apartment building on a quiet street within walking distance to the Cibulka and Ladrunka popular parks.

The lower floor of the apartment consists of a living room with balcony, separated kitchen, bedroom, bathroom with toilet and a bathtub, and an entry hall. Upper floor offers a gallery with bookcase, 2 bedrooms, bathroom with shower and a separate toilet.

Skylights, Whirlpool appliances, security entrance door, home phone. The apartment includes **two parking spaces and a cellar**. The public transport stops are 500 meters away, a few minutes by bus to the **Anděl metro station (line B)** or the **Nemocnice (Hospital) Motol metro station (line A)**. Thanks to the nearby **Plzeňská and Rozvadovská spojka streets**, the apartment is also well-placed for departures from Prague to the west. Two garage spaces included. Common building charges, heating and water CZK 5,262/month. Electricity is billed separately.

Interior 159 m<sup>2</sup>, balcony 8 m<sup>2</sup>.



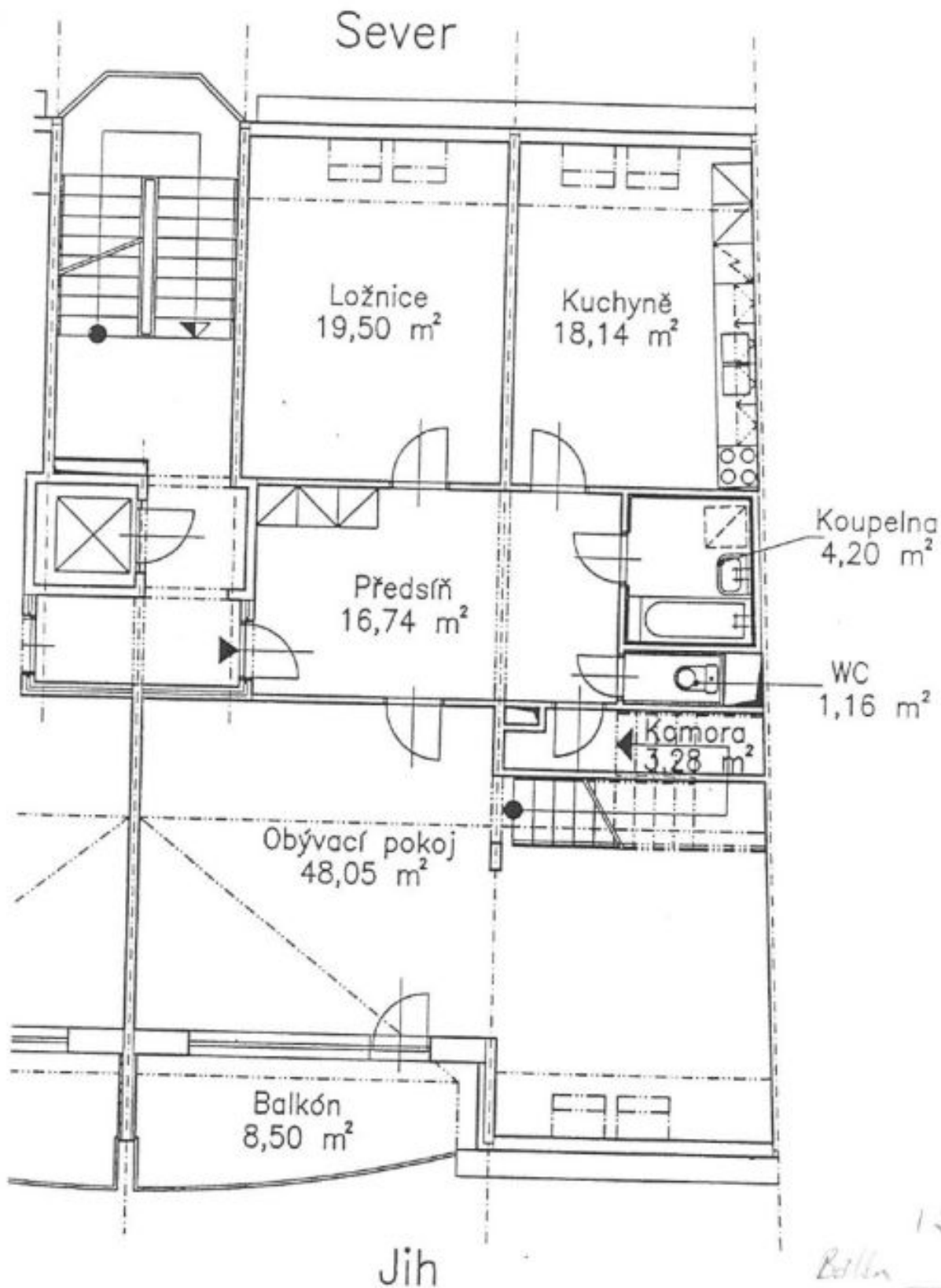
\* Area of the unit according to the Civil Code. The area consists of the sum total area of the entire unit bounded by perimeter walls.



## Apartment Three-bedroom (4+1)

Rented

159 m<sup>2</sup>, Prague 5, Motol, Brdlikova





## Apartment Three-bedroom (4+1)

159 m<sup>2</sup>, Prague 5, Motol, Brdlikova

Rented

