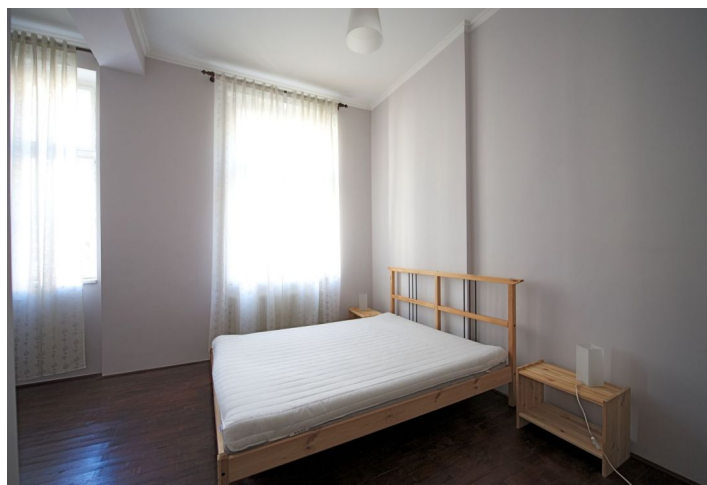




## Apartment Two-bedroom (3+kk)

Sold

120 m<sup>2</sup>, Praha 5, Smíchov, Na Bělidle





## Apartment Two-bedroom (3+kk)

**Sold**120 m<sup>2</sup>, Praha 5, Smíchov, Na Bělidle

Total area	120 m <sup>2</sup>
Parking	-
Cellar	Yes
PENB	G
Reference number	28205

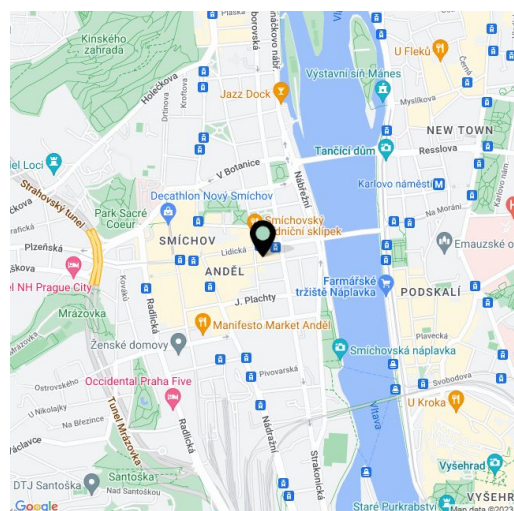
This renovated apartment is situated on the 2nd floor of a classic apartment building with a lift. Convenient location on a quiet side street, just a few minutes' walk from the commercial, shopping & entertainment area of Anděl and public transportation.

The layout consists of a spacious entrance hall, living room, partly separated fully equipped kitchen and dining area, **2 bedrooms**, a **walk-in closet**, separate toilet and bathroom (w/ **large corner bathtub under a window**, **shower**, **2 sinks** and utility area).

The interior features **wooden parquet floors**, **high ceilings**, casement windows, double wing doors and a **tile stove** in the bedroom. Security is provided by a latch on the front door. The apartment is equipped with **Internet**, satellite connection and an intercom system. Heating is provided by gas boiler Junkers. Furthermore, the apartment comes with a **cellar**. The elevator leads to the mezzanine.

The location boasts **great accessibility to the center** and plenty of services. Nearby you can find the Anděl metro station (Line B) & tram stop (100 meters from the building), various cafes & restaurants, small shops, a shopping mall, theater, health center, pharmacies and cinemas. Within walking distance are the **Smíchovská náplavka embankment** and the **Sacré Coeur park**. The popular Náplávka with its farmers markets and regular festivals is just across the river.

Interior: 120 m<sup>2</sup>.



\* Area of the unit according to the Civil Code. The area consists of the sum total area of the entire unit bounded by perimeter walls.



# Apartment Two-bedroom (3+kk)

**Sold**

120 m<sup>2</sup>, Praha 5, Smíchov, Na Bělidle

