



## Apartment Three-bedroom (4+kk)

Rented

173 m<sup>2</sup>, Prague 6, Střešovice, Lomená





## Apartment Three-bedroom (4+kk)

Rented

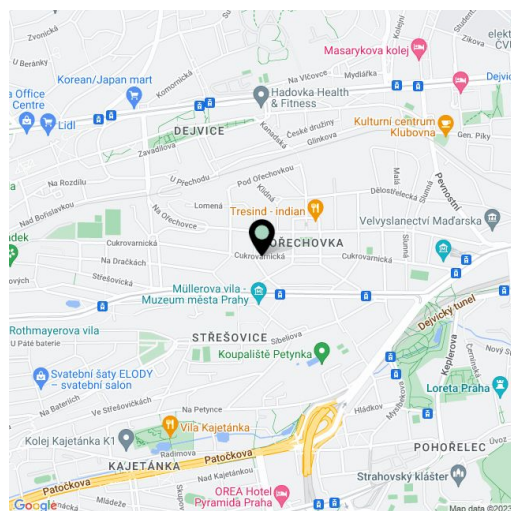
173 m<sup>2</sup>, Prague 6, Střešovice, Lomená

Total area	173 m <sup>2</sup>
Parking	Garage.
Garage	Yes
Cellar	-
PENB	G
Reference number	28340
Available from	Immediately

Brand new completely reconstructed air-conditioned 3-bedroom 2-bathroom split-level attic flat on the second floor of a renovated villa with a shared garden in a quiet cul-de-sac in a prestigious Prague 6 neighborhood, near the Prague Castle. Wonderful location with grand homes and lots of greenery, just minutes from a tram and bus stop, a few stops from Dejvická and Hradčanská metro stations with full amenities in the area, within easy reach of the airport and international schools.

The lower level features a large open plan living room with a **double sided fireplace**, dining area and a fully fitted kitchen, two bedrooms, bathroom (walk-in shower, sink, bidet, toilet), utility room, and an open entry hall with built-in storage. The upper floor includes a spacious walk-through **gallery suitable for a study**, one more bedroom, and bathroom (bath, sink, toilet).

Preserved original details, **hardwood floors**, heated tiles in the bathrooms, built-in wardrobe in one bedroom, gas boiler, automatic outdoor blinds, marble kitchen countertop, dishwasher, **alarm**, no lift. Part of the shared garden available for the tenants. **Garage** (included), easy parking on the street. Deposit for common building charges and utilities around CZK 4000 per month.



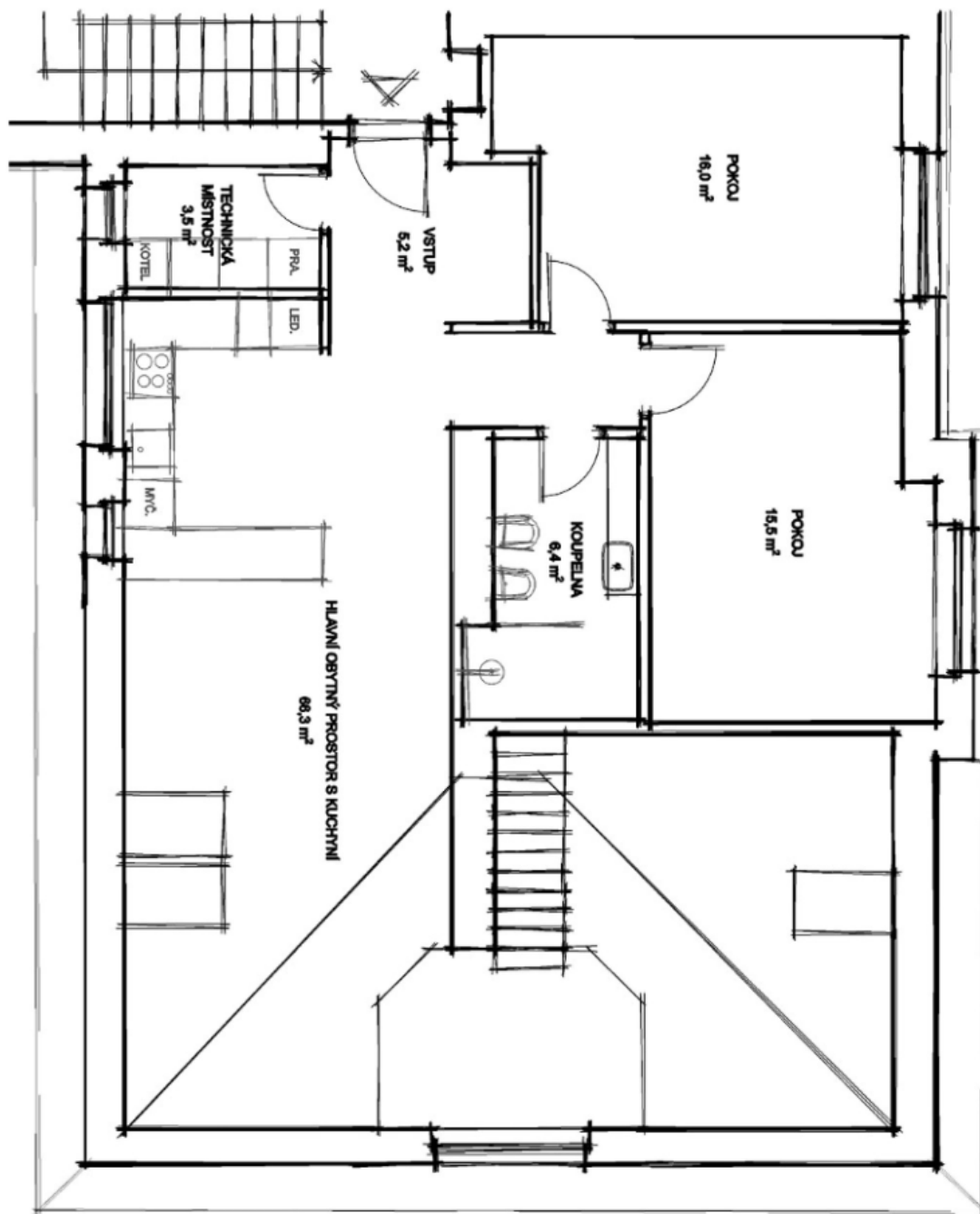
\* Area of the unit according to the Civil Code. The area consists of the sum total area of the entire unit bounded by perimeter walls.



## Apartment Three-bedroom (4+kk)

Rented

173 m<sup>2</sup>, Prague 6, Střešovice, Lomená





## Apartment Three-bedroom (4+kk)

Rented

173 m<sup>2</sup>, Prague 6, Střešovice, Lomená

