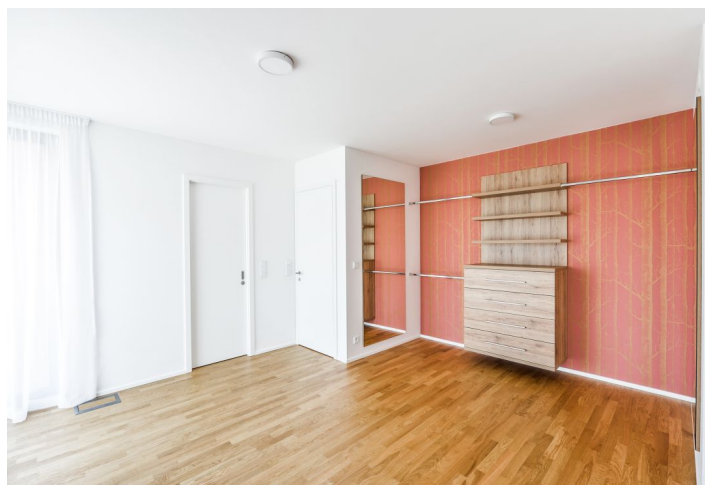




## House Four-bedroom (5+kk)

Rented

230 m<sup>2</sup>, Prague 6, Dejvice, V Šáreckém údolí





## House Four-bedroom (5+kk)

**Rented**

230 m², Prague 6, Dejvice, V Šáreckém údolí

Plot	207 m²
Foot print	95 m²
Parking	Double garage.
Garage	Yes
Cellar	Yes
PENB	A
Reference number	28388
Available from	Immediately

This brand new high standard 4-bedroom 3-bathroom low energy passive townhouse - part of the TOP RESIDENCE project with interiors designed by the Olgoj Chorchoj studio, is situated in the charming Šárecké Valley surrounded by green hills and peaceful countryside. Good connection to the city center, the airport and international schools in Prague 6, convenient to Dejvická metro station with full amenities in the area. Just steps to Global Concept Montessori School, and five min. to the ISP School.

The ground floor features living room with dining area, a fully fitted open kitchen, pantry and access to the terrace and garden, guest bedroom, guest bathroom (walk-in shower, toilet), and entry hall with built-in wardrobes. The first floor includes a spacious master bedroom with an en-suite bathroom (bath, bidet, toilet), two more bedrooms with a shared balcony overlooking the adjacent forest, family bathroom (walk-in shower, toilet), and walk-in closet with laundry area. The basement floor includes a wellness room (or playroom / guest bedroom) with garden access, utility room, boiler room, and garage.

Wooden floors, tiles, heated floors in the bathrooms, heat recovery ventilation, large format French windows, automatic outdoor blinds, gas boiler, dishwasher, microwave oven, video entry phone. Double garage, automatic garage gate, 24/7 security service, security camera system, social club and a children's playground. There is a number of cycling and jogging paths in the area. Deposit for community charges and water CZK 8100 per month. Gas and electricity are billed separately.

