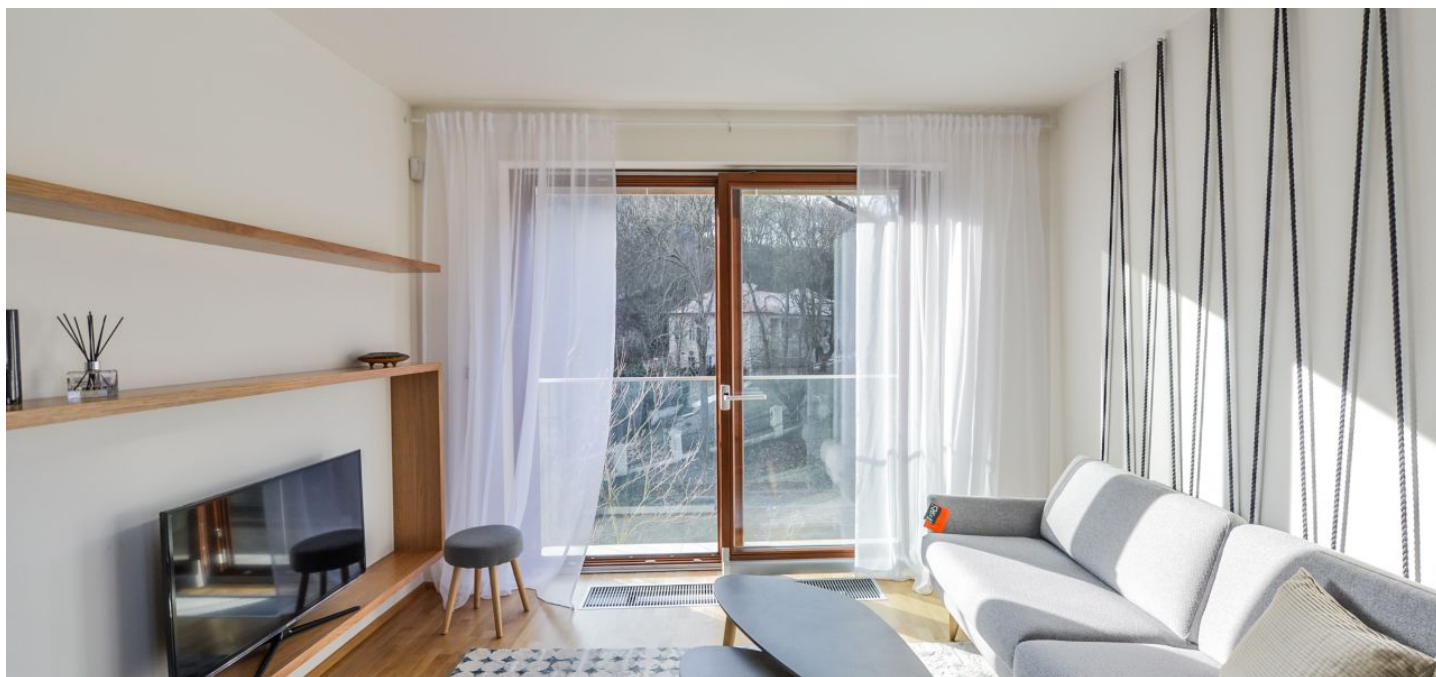




Apartment One-bedroom (2+kk)

Rented

60 m², Prague 5, Smíchov, Mozartova





Apartment One-bedroom (2+kk)

Rented

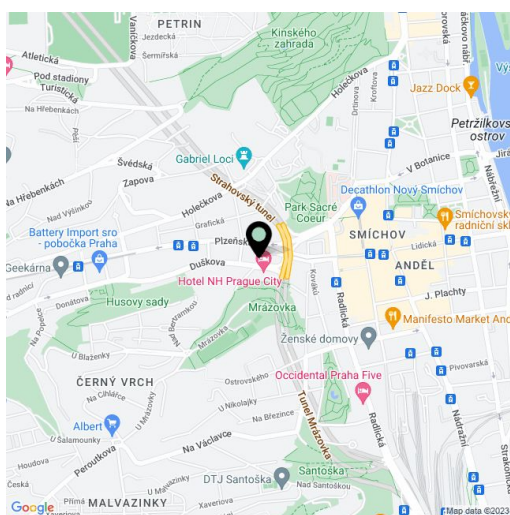
60 m², Prague 5, Smíchov, Mozartova

Total area	60 m ²
Parking	Garage parking.
Garage	Yes
Cellar	Yes
PENB	B
Reference number	28397
Available from	Immediately

Benefiting from beautiful views of the adjacent Bertramka Park incl. the W. A. Mozart Museum is this brand new fully furnished 1-bedroom flat on the fifth floor of the new Na Bertramce Residence. Situated in a quiet part of Smíchov, in the vicinity of the Anděl and Nový Smíchov shopping and entertainment centers, a full service commercial district, and with quick connections to the city center - Anděl metro station, trams.

The interior includes one bedroom with built-in wardrobes, a living room with a fully fitted open plan kitchen, a fitted **walk-in closet**, bathroom (bathtub with a shower screen, toilet), and entrance hall. Both main rooms have large French windows overlooking the park.

Heat recovery ventilation, wooden floors, tiles, security entry door, automatic outdoor blinds, washer, dryer, induction cooktop, dishwasher, microwave oven, basic kitchenware, vacuum cleaner, TV, alarm that can be connected to a security agency, video entry phone, **cellar**. One **garage parking space** included. Deposit for common building charges and utilities CZK 3000 per month.



* Area of the unit according to the Civil Code. The area consists of the sum total area of the entire unit bounded by perimeter walls.



Apartment One-bedroom (2+kk)

60 m², Prague 5, Smíchov, Mozartova

Rented

