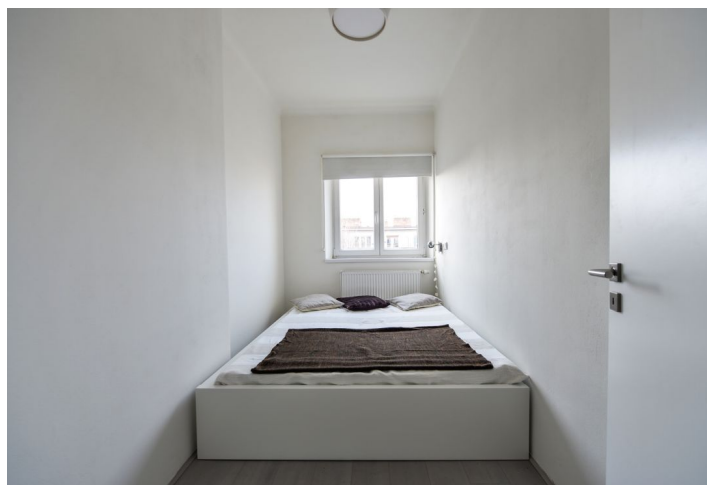




Apartment One-bedroom (2+kk)

Rented

34 m², Prague 4, Nusle, U Družstva Ideál





Apartment One-bedroom (2+kk)

Rented

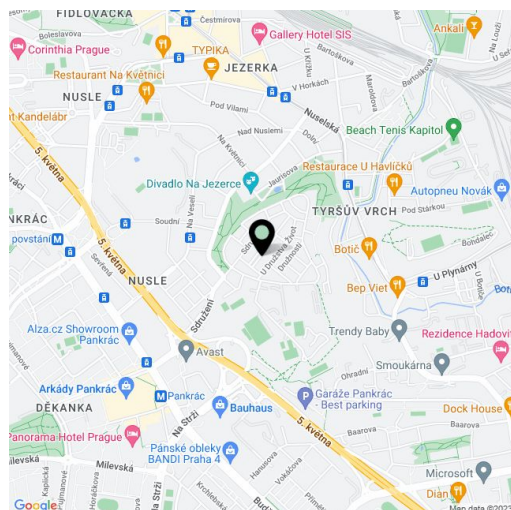
34 m², Prague 4, Nusle, U Družstva Ideál

Total area	46 m ²
Floor area*	34 m ²
Terrace	12 m ²
Parking	-
Cellar	Yes
PENB	G
Reference number	28491
Available from	Immediately

Furnished reconstructed 1-bedroom flat with a 12 m² west facing terrace, on the fourth top floor of a well maintained residential building surrounded by lots of greenery and with no lift. Located in a quiet Prague 4 area moments from the Jezerka Park, with full amenities within easy reach and very good transportation connections (trams, buses), a ten minute walk to Pankrác metro station and Arkády Pankrác shopping mall.

The flat includes living room with a fully fitted open kitchen and terrace access, one bedroom, shower bathroom with toilet, and entrance hall.

Basic furniture, laminated floors, tiles, gas heating, roller blinds, automatic awning, washing machine, dishwasher, TV, 4 m² cellar. Common building charges and water CZK 750/month for one person. Gas and electricity will be transferred to the tenant.



* Area of the unit according to the Civil Code. The area consists of the sum total area of the entire unit bounded by perimeter walls.