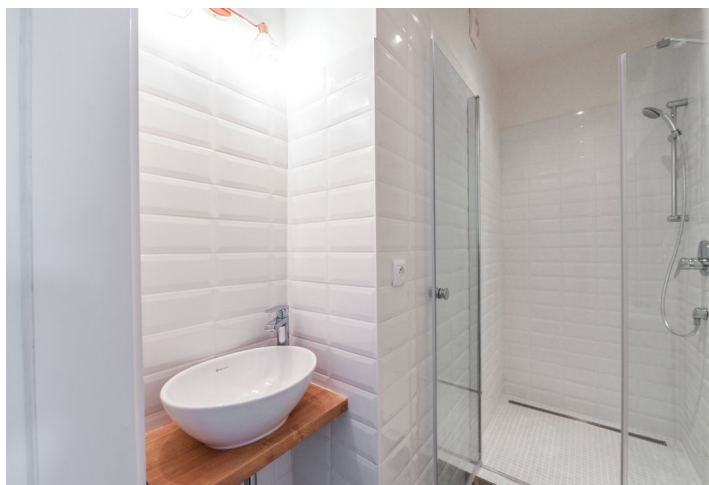




Apartment One-bedroom (2+1)

Rented

58 m², Prague 2, Vyšehrad, Vratislavova





Apartment One-bedroom (2+1)

Rented

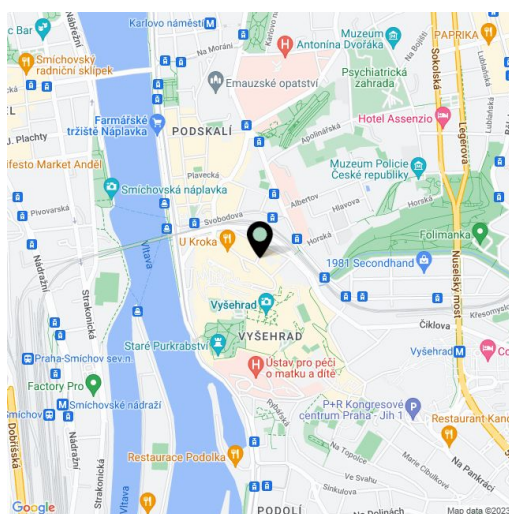
58 m², Prague 2, Vyšehrad, Vratislavova

Total area	58 m ²
Parking	-
Cellar	-
PENB	G
Reference number	28495
Available from	Immediately

Completely renovated 1-bedroom flat located below the Vyšehrad Castle. Situated on the third floor of a fully renovated building with a lift, with a children's playground just next door and a green park nearby. Quiet residential street within walking distance of the Vltava embankment, with quick tram connections to the city center and the Palackého / Karlovo náměstí metro station and full amenities within easy reach.

The interior features one bedroom, a fully fitted walk-through kitchen with dining area, living room, bathroom with a walk-in shower, toilet, and entrance hall.

Preserved original details, large windows, vinyl floors, tiles, double interior doors, gas boiler, dishwasher. Common building charges and water CZK 500/person/month. Electricity and heating bills will be transferred to the tenant.



* Area of the unit according to the Civil Code. The area consists of the sum total area of the entire unit bounded by perimeter walls.