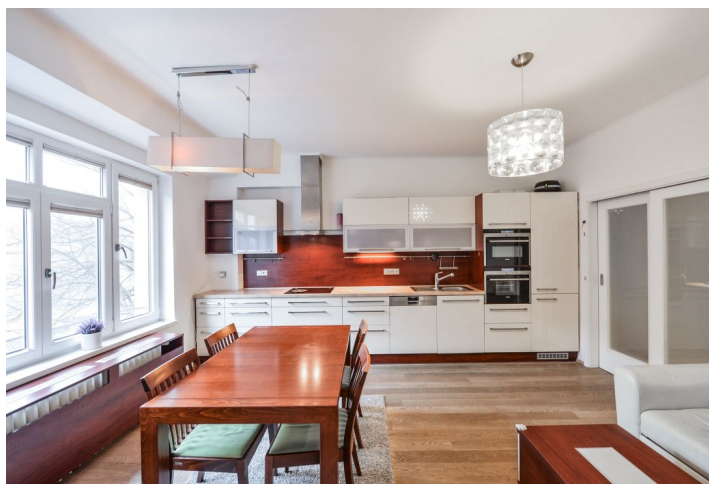




## Apartment Three-bedroom (4+kk)

Rented

91 m<sup>2</sup>, Prague 6, Dejvice, Generála Píky





## Apartment Three-bedroom (4+kk)

Rented

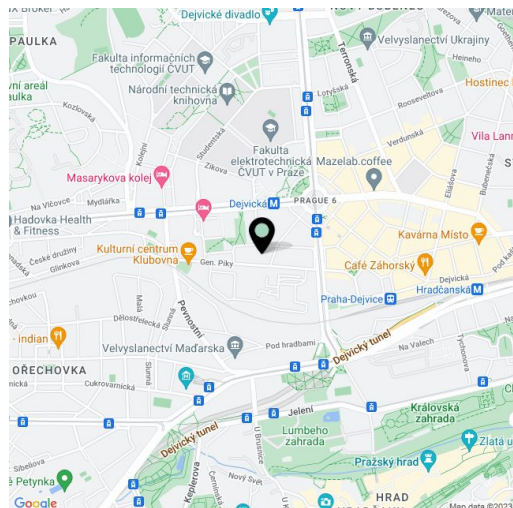
91 m<sup>2</sup>, Prague 6, Dejvice, Generála Píky

Total area	93 m <sup>2</sup>
Floor area*	91 m <sup>2</sup>
Balcony	2 m <sup>2</sup>
Parking	-
Cellar	Yes
PENB	G
Reference number	28535
Available from	Immediately

Sunny renovated furnished 3-bedroom flat with a balcony on the second floor of a completely renovated building with lift, in a popular residential area of Prague 6 – Dejvice with full amenities within easy reach. Located a few min. from Dejvická metro station at Vítězné náměstí square with multiple tram and bus stops, and within walking distance of the Prague Castle. Convenient to numerous international schools and the airport.

The interior includes living room with a fully fitted open kitchen, two bedrooms - one with a **balcony** and the other with a small **walk-in closet** and a **winter garden**, a study which can be used as a guest bedroom, bathroom with bath and toilet, a guest toilet, and a spacious entry hall.

**Bleached oak floors**, tiles, high quality plastic windows, security entry door, built-in storage, heated bathroom floor, central heating, blinds, Laufen and Kaldewei bathroom fixtures, washer, dryer, dishwasher, induction cooktop, **cellar**. Deposit for common building charges, water and heating CZK 4500 per month. Electricity is billed separately. Available from September 2021.



\* Area of the unit according to the Civil Code. The area consists of the sum total area of the entire unit bounded by perimeter walls.





# Apartment Three-bedroom (4+kk)

Rented

91 m<sup>2</sup>, Prague 6, Dejvice, Generála Píky



Generála Píky

pokoj 1	23,4 m <sup>2</sup>
pokoj 2	12,7 m <sup>2</sup>
pokoj 3	11,9 m <sup>2</sup>
kuchyně	23,1 m <sup>2</sup>
předstřn	11,1 m <sup>2</sup>
koupelna + wc	5,4 m <sup>2</sup>
wc	1,0 m <sup>2</sup>
komora	2,5 m <sup>2</sup>
<b>balkon</b>	<b>2,3 m<sup>2</sup></b>
<b>CELKEM</b>	<b>91,1 m<sup>2</sup></b>



mříčka : 1 : 50  
č.z. 1/2016  
vyhotovil: Ing. Janská Marcela v roce 2016