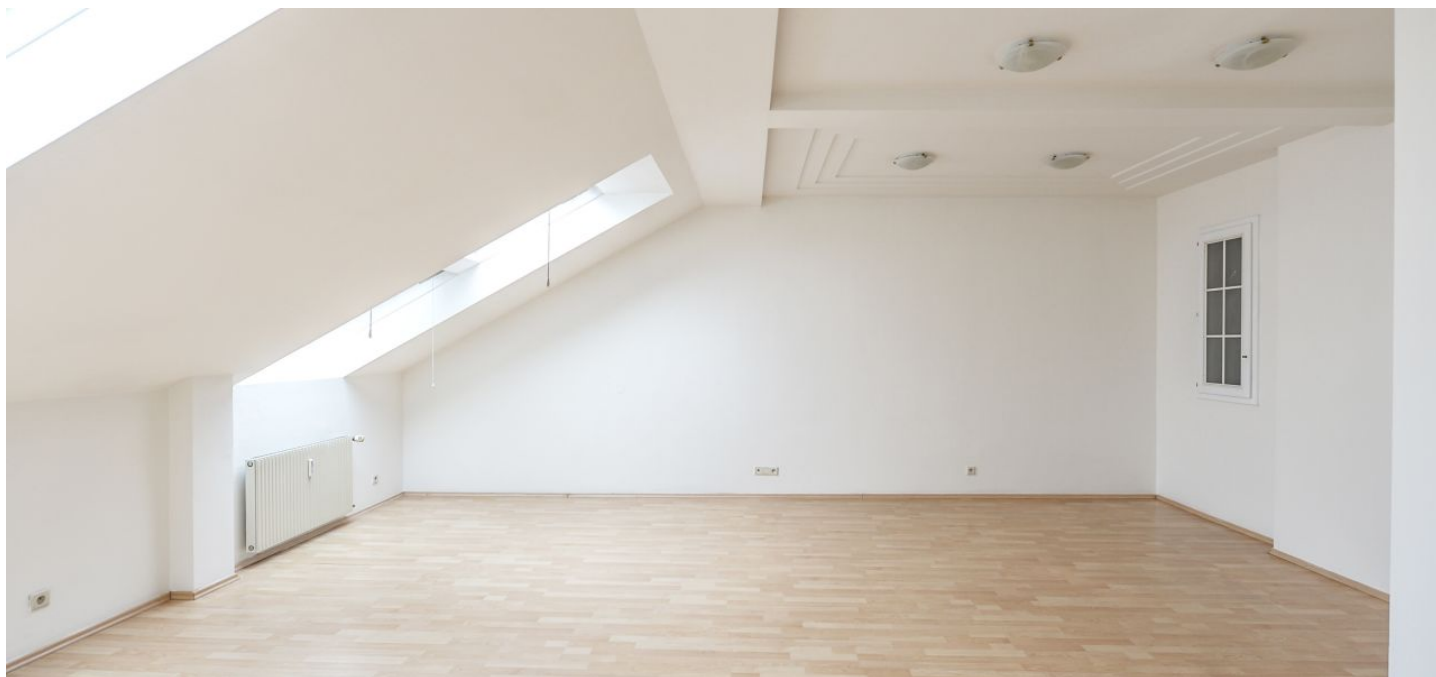




Apartment Two-bedroom (3+1)

Rented

134 m², Praha 1, Nové Město, Krakovská





Apartment Two-bedroom (3+1)

Rented

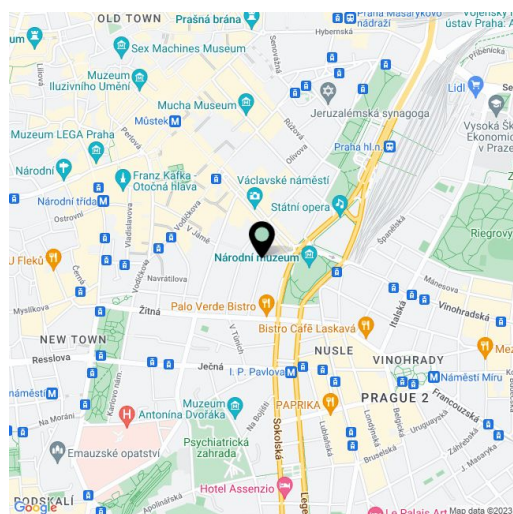
134 m², Praha 1, Nové Město, Krakovská

Total area	134 m ²
Parking	Courtyard parking available.
Cellar	-
PENB	G
Reference number	28578
Available from	Immediately

This spacious 2-bedroom attic flat with parking is situated on the sixth top floor of a renovated Art-Nouveau building with lift, reception and 24/7 security. Centrally located just a few minute walk from Wenceslas Square and I.P.Pavlova Square with access to all three Prague metro lines and full amenities within easy reach.

The flat features a fully fitted kitchen, a spacious living room, two separate bedrooms with a shared **walk-in closet**, bathroom (bath, walk-in shower, double sink, toilet), a guest toilet, and a large entrance hall with a small walk-in closet.

Built-in storage, laminated floors, tiles, light tunnels, blinds, washing machine, dishwasher, microwave oven. Courtyard **parking** available at CZK 4500 or 3500 per month. Deposit for common building charges, water and heating CZK 6617 per month. Electricity is billed separately.



* Area of the unit according to the Civil Code. The area consists of the sum total area of the entire unit bounded by perimeter walls.