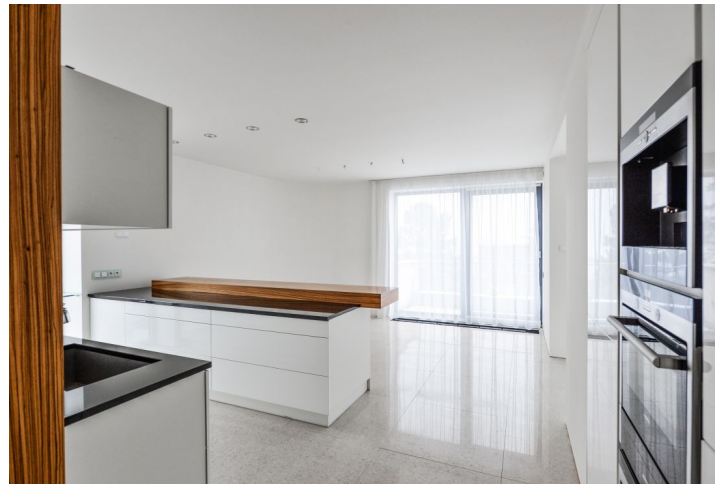
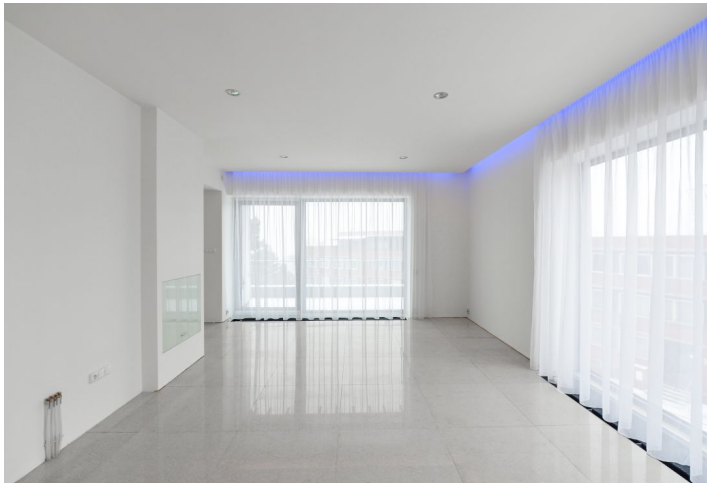




Apartment Two-bedroom (3+kk)

Rented

117 m², Prague 6, Dejvice, Na Míčáncě





Apartment Two-bedroom (3+kk)

Rented

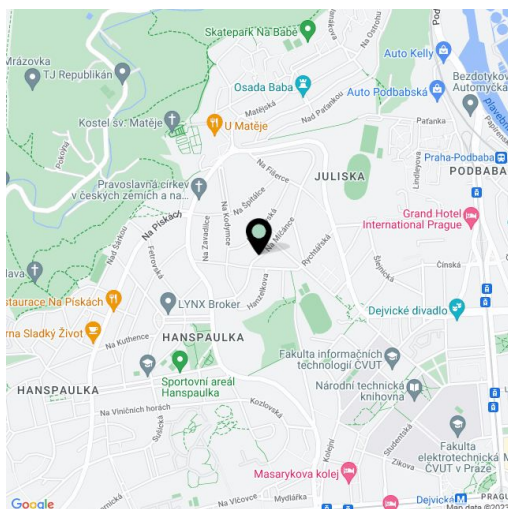
117 m², Prague 6, Dejvice, Na Míčánce

Total area	131 m ²
Floor area*	117 m ²
Terrace	14 m ²
Parking	Garage.
Garage	Yes
Cellar	-
PENB	G
Reference number	28582
Available from	Immediately

Elegant flat in a prestigious neighborhood. This is a fully refurbished 2-bedroom flat with a large terrace on the first floor of a traditional villa with a shared garden. Situated in a quiet residential neighborhood of Hanspaulka in close vicinity of the green Šárka Valley. Location with very good transportation connections - a few bus stops to Bořislavka and Hradčanská metro stations, a 15-20 min. drive to the city center, a short drive to the airport. Convenient to international schools, within walking distance of Juliska sports grounds.

The **tasteful** interior features an open living room with a fully fitted open kitchen, dining area and access to the terrace providing nice green views, two separate bedrooms, a fitted walk-in closet, shower bathroom with bidet and toilet, utility room, guest toilet, and entrance hall.

Tile floors throughout, floor-to-ceiling windows, recessed lighting, quality kitchen equipment, gas boiler, central heating, alarm, video entry phone, shared garden. No lift. Can be furnished at a higher rent. Ground floor **garage** available. Service charges and utilities around CZK 3500 per month.



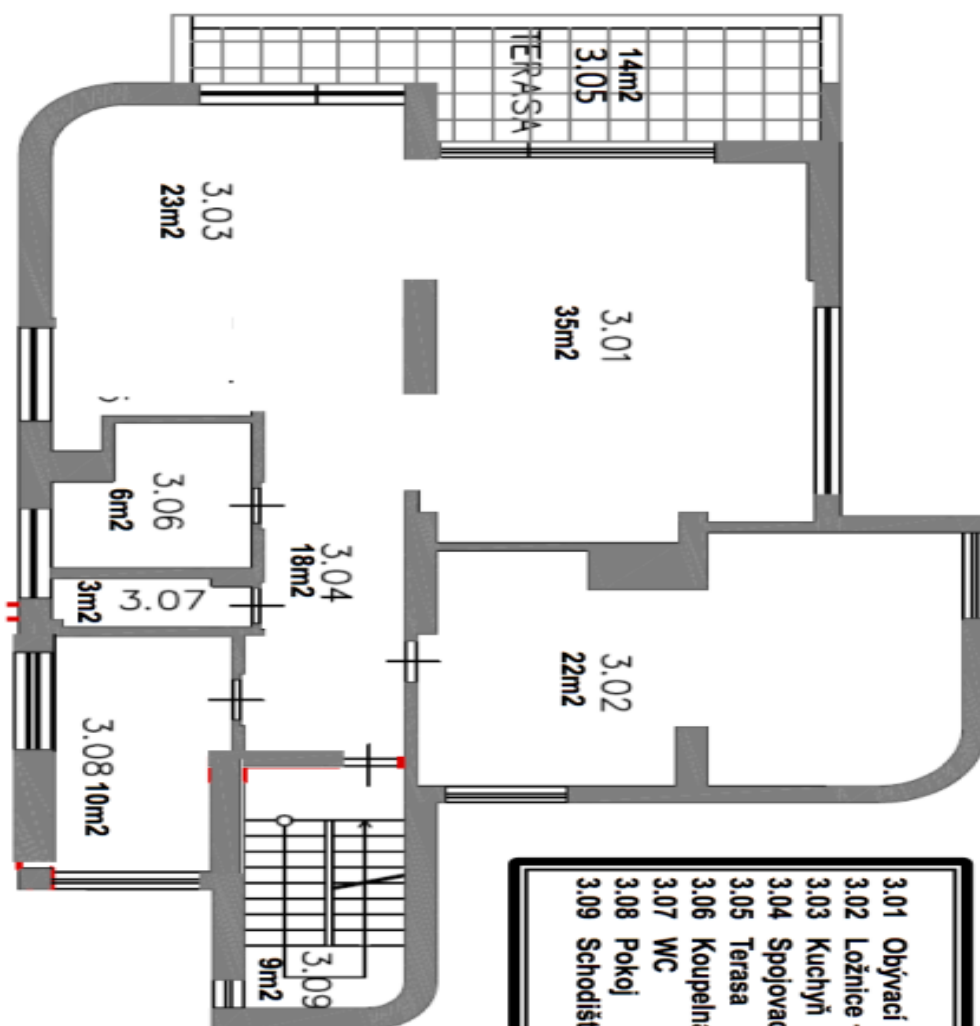
* Area of the unit according to the Civil Code. The area consists of the sum total area of the entire unit bounded by perimeter walls.



Apartment Two-bedroom (3+kk)

117 m², Prague 6, Dejvice, Na Míčáncce

Rented



3.01	Obývací pokoj	35m ²
3.02	Ložnice + šatna	22m ²
3.03	Kuchyně	23m ²
3.04	Spojovací chodba	18m ²
3.05	Terasa	14m ²
3.06	Koupelna	6m ²
3.07	WC	3m ²
3.08	Pokoj	10m ²
3.09	Schodiště	9m ²