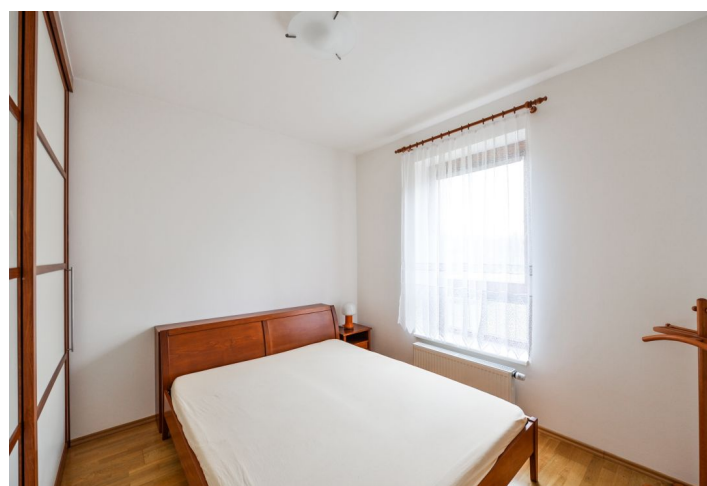




## Apartment One-bedroom (2+kk)

Rented

48 m², Prague 9, Libeň, Podvinný mlýn





## Apartment One-bedroom (2+kk)

**Rented**

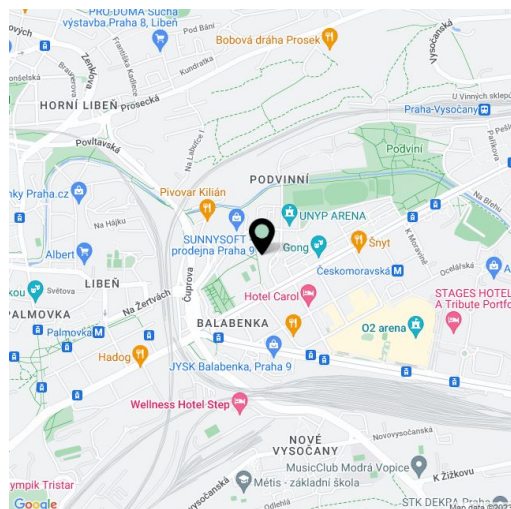
48 m², Prague 9, Libeň, Podvinný mlýn

Total area	54 m²
Floor area*	48 m²
Balcony	6 m²
Parking	Garage parking.
Garage	Yes
Cellar	-
PENB	G
Reference number	28624
Available from	Immediately

Fully furnished 1-bedroom flat with a balcony and views of the adjacent park, situated on the first floor of a modern residential project with lots of surrounding greenery - a park with a river and a bike path, underground parking and 24-hour security service. Perfect setting just a short walk to Českomoravská metro station and a 10-15 minute drive to the city center.

The interior includes living room with a fully fitted open kitchen and access to the balcony, one bedroom with built-in wardrobes, bathroom with a walk-in shower and toilet, and entrance hall with built-in wardrobes and storage.

Wooden floating and tile floors, security entry door, central heating, blinds, washer, microwave oven, video entry phone, UPC cable, garden furniture, lift. One garage parking space included. Common building charges (incl. security and greenery maintenance), heating and water CZK 2800 per month. Deposit for electricity CZK 700 per month.



\* Area of the unit according to the Civil Code. The area consists of the sum total area of the entire unit bounded by perimeter walls.