



## Apartment Two-bedroom (3+kk)

Sold

62.2 m<sup>2</sup>, Prague 8, Karlín, Pernerova





## Apartment Two-bedroom (3+kk)

**Sold**62.2 m<sup>2</sup>, Prague 8, Karlín, Pernerova

Total area	67 m <sup>2</sup>
Floor area*	62 m <sup>2</sup>
Balcony	5 m <sup>2</sup>
Parking	Yes
Garage	Yes
Cellar	Yes
PENB	B
Reference number	28661

This spacious apartment with a balcony is part of a modern residence, which is located near the center in the sought-after district of Karlín, on the edge of a park and a short walk from a metro station and tram stops.

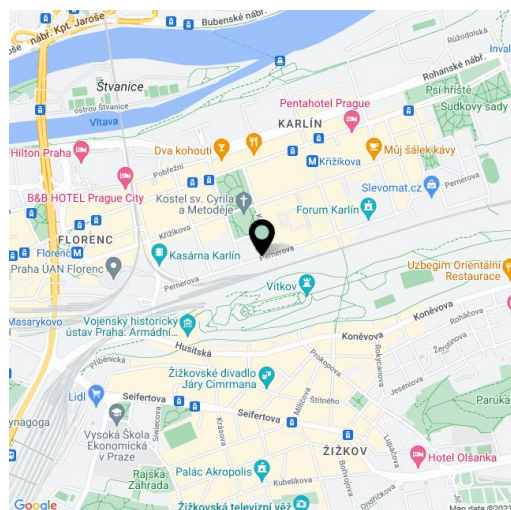
The apartment on the 3th floor, set in a building with preparation for reception and security, features a spacious living room with a kitchen and the entrance to an **east-facing balcony**. There is also a bedroom, a bathroom, a utility room and an entrance hall.

The three types of interior standards offered (CITY/STYLE/PREMIUM) include, for example, **solid three-layer oak floors**, large-format tiles, large windows, high-quality bathroom sanitary facilities and fittings, alarm, security door and videophone. Currently, client changes can be made. **The purchase price includes a cellar, parking space is for extra cost.**

The dynamically developing district of Karlín carries elements of European cities. The area boasts an abundance of greenery, cultural centers, schools of all levels, shops, cars, bars, and restaurants offering culinary delights from all over the world. The **Křižíkova metro station** (line B) and tram stop are just a **few meters** from the building, making travel to the city center easy, fast and convenient (just a few minutes).

Final inspection is planned for December 2019. The unit will be approved as an accommodation unit with use for long-term accommodation. The unit may be rented out with permanent residency registration.

Interior 62.2 m<sup>2</sup>, balcony 4.91 m<sup>2</sup>, cellar 3.72 m<sup>2</sup>.



\* Area of the unit according to the Civil Code. The area consists of the sum total area of the entire unit bounded by perimeter walls.





# Apartment Two-bedroom (3+kk)

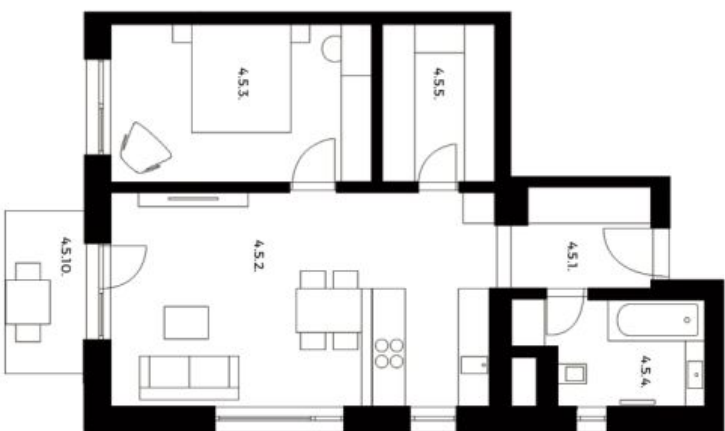
62.2 m<sup>2</sup>, Prague 8, Karlín, Pernerova

Sold

## PRAGA Residence

### JEDNOTKA 4.5. 3+KK | 4 NP

Č.M.	NAZEV MÍSTNOSTI	PLOCHA M <sup>2</sup>
4.5.1.	PŘEDSÍŇ	5.22
4.5.2.	OBYTNÝ PROSTOR + KK	27.48
4.5.3.	LOŽNICE	14.13
4.5.4.	KOUPELNA+WC	5.95
4.5.5.	KOMORA	6.16
	OSTATNÍ PLOCHY A PŘÍČKY	3.25
	<b>CELKOVÁ PLOCHA JEDNOTKY*</b>	<b>62.2</b>
4.5.10.	BALKON	4.91
5.4.5.	SKLEP	3.72



1:100

svoboda&williams | CHRISTIE'S INTERNATIONAL REAL ESTATE

Na Pevštině 2, 110 00 Praha 1, Česká republika, +420 257 328 281, +420 257 328 281, +420 257 328 032, info@svoboda-williams.com

m2realestate