



## Apartment Four-bedroom (5+kk)

Sold

126 m<sup>2</sup>, Prague 10, Strašnice, Gutova





## Apartment Four-bedroom (5+kk)

**Sold**126 m<sup>2</sup>, Prague 10, Strašnice, Gutova

Total area	162 m <sup>2</sup>
Floor area*	126 m <sup>2</sup>
Balcony	5 m <sup>2</sup>
Terrace	31 m <sup>2</sup>
Parking	2 garage parking spaces
Cellar	Yes
PENB	G
Reference number	28739

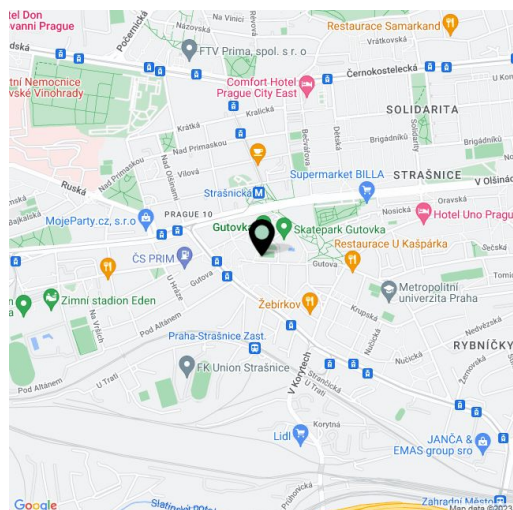
This maisonette with large terrace, balcony and 2 garage parking spaces is part of a modern building with a lift, situated in a quiet residential area with a quick connection to the centre and with many sports opportunities.

The layout of the apartment located on the 3rd and 4th floor consists of a living room with a kitchen and an entrance to the **balcony**, 2 bedrooms (1 with bathroom and built-in wardrobe) with windows leading to a landscaped garden, guest toilet and a staircase to the floor. There are a **large bright gallery** and 1 bedroom with patio entrances and another bathroom.

The interior includes **parquet floors** (tiles in the bathrooms), **wooden euro-windows**, kitchen unit with gas stove and Whirlpool built-in appliances. A gas boiler provides heating. The **cellar** belongs to the apartment.

The house stands in a quiet location side from the bustling streets and near tram stops. The way to the **A Strašnická metro station** takes 1-minute by tram. The kindergarten and the elementary school are within walking distance as well as all other amenities. Sports lovers will appreciate the nearby football, ice and snow stadiums, a swimming pool with a swimming pool or **Gutovka park** with a skatepark, minigolf, rope centre and children's and transport playgrounds.

Interior 127.2 m<sup>2</sup>, terrace 30.9 m<sup>2</sup>, balcony 4.70 m<sup>2</sup>.



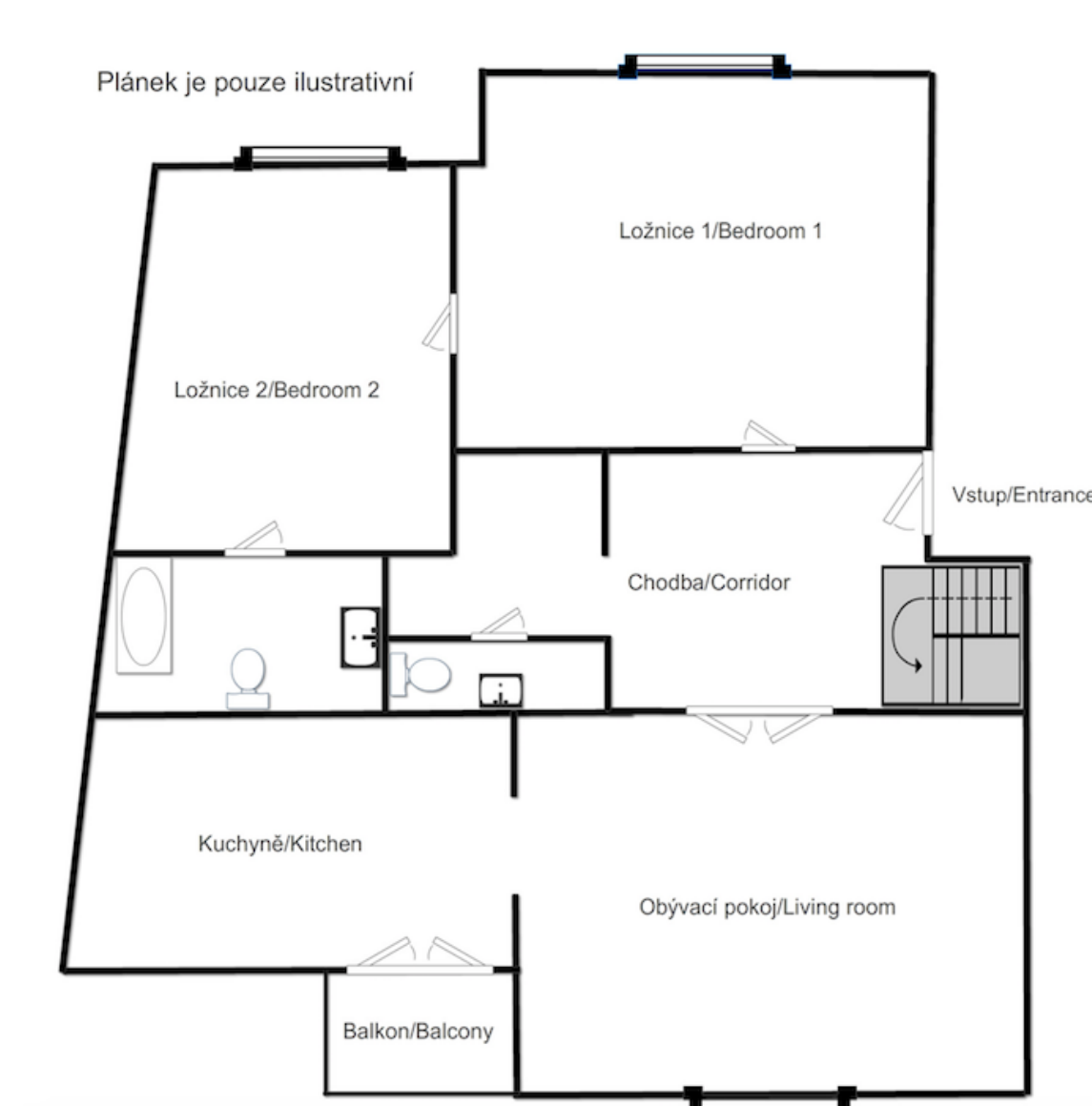
\* Area of the unit according to the Civil Code. The area consists of the sum total area of the entire unit bounded by perimeter walls.



## Apartment Four-bedroom (5+kk)

126 m<sup>2</sup>, Prague 10, Strašnice, Gutova

Sold





## Apartment Four-bedroom (5+kk)

126 m<sup>2</sup>, Prague 10, Strašnice, Gutova

Sold

Plánek je pouze ilustrativní

