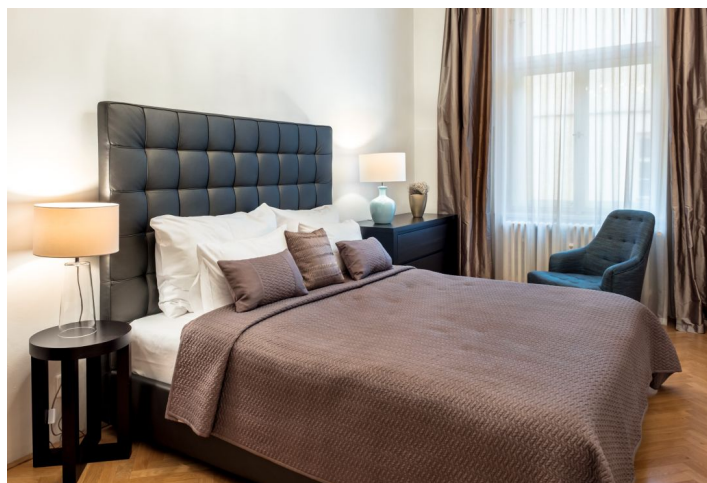
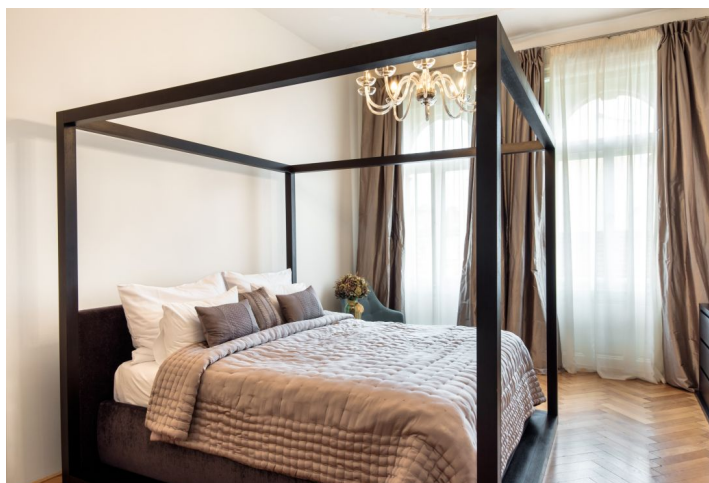




## Apartment Two-bedroom (3+kk)

Rented

120 m<sup>2</sup>, Prague 1, Staré Město





## Apartment Two-bedroom (3+kk)

**Rented**120 m<sup>2</sup>, Prague 1, Staré Město

Total area	120 m <sup>2</sup>
Parking	-
Cellar	-
PENB	G
Reference number	28750
Available from	Immediately

\* Area of the unit according to the Civil Code. The area consists of the sum total area of the entire unit bounded by perimeter walls.

**Fully refurbished furnished 2-bedroom flat with views of the Vltava River and the Prague Castle, on the third floor of a completely reconstructed historic building with a lift and an impressive entrance hall. Located in the historic center of Prague just steps from the Rotunda of the Holy Cross, moments from the National Theatre and Charles Bridge. Within easy reach of multiple tram links and Národní třída metro station.**

The interior features a living room with a fully fitted open kitchen, two bedrooms, bathroom with a walk-in shower and bath, a separate toilet, utility room, and an entrance hall.

**Preserved original details**, high ceilings, large windows, **solid wood parquet floors**, tiles, dishwasher, WiFi, alarm, chip card entry to the building. Monthly deposit for common building charges, water, heating and weekly cleaning CZK 7654. Electricity is billed separately. **Short term** available at a higher rent.