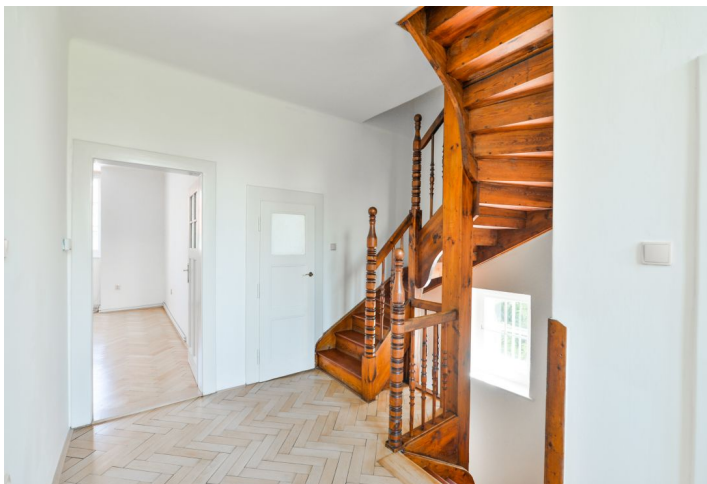




House Four-bedroom (5+kk)

Rented

230 m², Prague 6, Střešovice, Spojená





House Four-bedroom (5+kk)

Rented230 m², Prague 6, Střešovice, Spojená

Plot	413 m ²
Parking	Garage and parking on the plot.
Garage	Yes
Cellar	Yes
PENB	G
Reference number	28805
Available from	Immediately

Newly renovated 4-bedroom 3-bathroom corner townhouse from the 1920s, built in the "English style", with preserved original details and a front and back garden. Situated in the center of the prestigious residential neighborhood of Ořechovka, in close vicinity of the Prague Castle. Quiet green location with quick access to the city center and full amenities, in the immediate neighborhood of the Central Ořechovka Building with restaurants and a grocery store. Convenient to the airport and international schools, bus and tram stop nearby (to Hradčanská, Dejvická, Bořislavka and Petřiny metro stations).

Ground floor: living room with dining area and a fully fitted open kitchen, shower bathroom with toilet, hall, corridor with built-in storage and back garden / patio entrance. First floor: hall, two interconnected bedrooms with a **double sided historic ceramic stove**, walk-in closet / study, bathroom with bath and toilet. Second floor: hall, one bedroom, spacious open attic room, walk-in shower, toilet. Basement floor: boiler room, storage rooms.

Original wooden staircase, solid wood parquet and vinyl floors, new gas boiler, dishwasher, attic storage. **Garage** and parking on the plot. Deposit for water and garbage removal CZK 2000 per month. Gas and electricity will be transferred to the tenant.

