



Apartment Three-bedroom (4+kk)

Rented

163 m², Praha 3, Vinohrady, Laubova





Apartment Three-bedroom (4+kk)

Rented

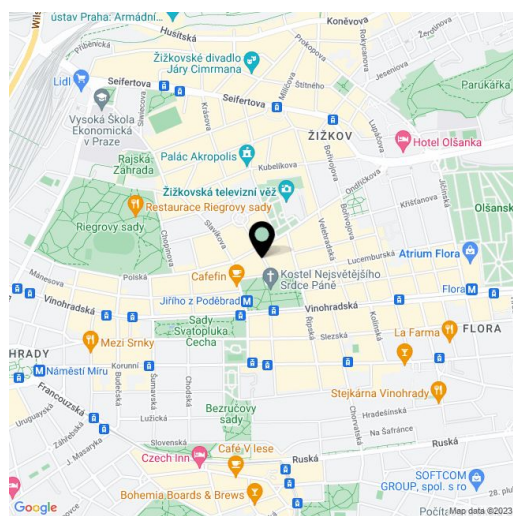
163 m², Praha 3, Vinohrady, Laubova

Total area	167 m ²
Floor area*	163 m ²
Balcony	4 m ²
Parking	One parking space located 350 m from the building is included in the rent.
Garage	Yes
Cellar	Yes
Service price	Common building charges CZK 3,000/person/month. Monthly deposit for water and heating CZK 4,000-5,000. Electricity will be transferred to the tenant.
PENB	G
Reference number	28832
Available from	01.03.2025

Boasting views of Jiřího z Poděbrad Square and the unique modern Church of the Most Sacred Heart of Our Lord, this attractive air-conditioned unfurnished apartment is situated on the second floor of a completely refurbished Art Nouveau building with an elevator and preserved original features. Conveniently located in a popular Vinohrady residential area by Jiřího z Poděbrad Square with a metro station and tram links, with full amenities within easy reach.

The interior of this corner apartment includes a spacious living room with a fully fitted open plan kitchen and dining area with access to the balcony, a master bedroom with a walk-in closet and a fully equipped en-suite bathroom with a tub, shower, and toilet, two bedrooms (one with a balcony), a bathroom with a shower, toilet, and bidet, and an entry hall.

High-standard materials and finishes, large windows, hardwood parquet floors, tiles, security entry door, built-in wardrobes, gas boiler, high-quality appliances incl. a washer/dryer, plenty of storage space, cellar. Unfurnished, possibility to furnish at a higher rent.



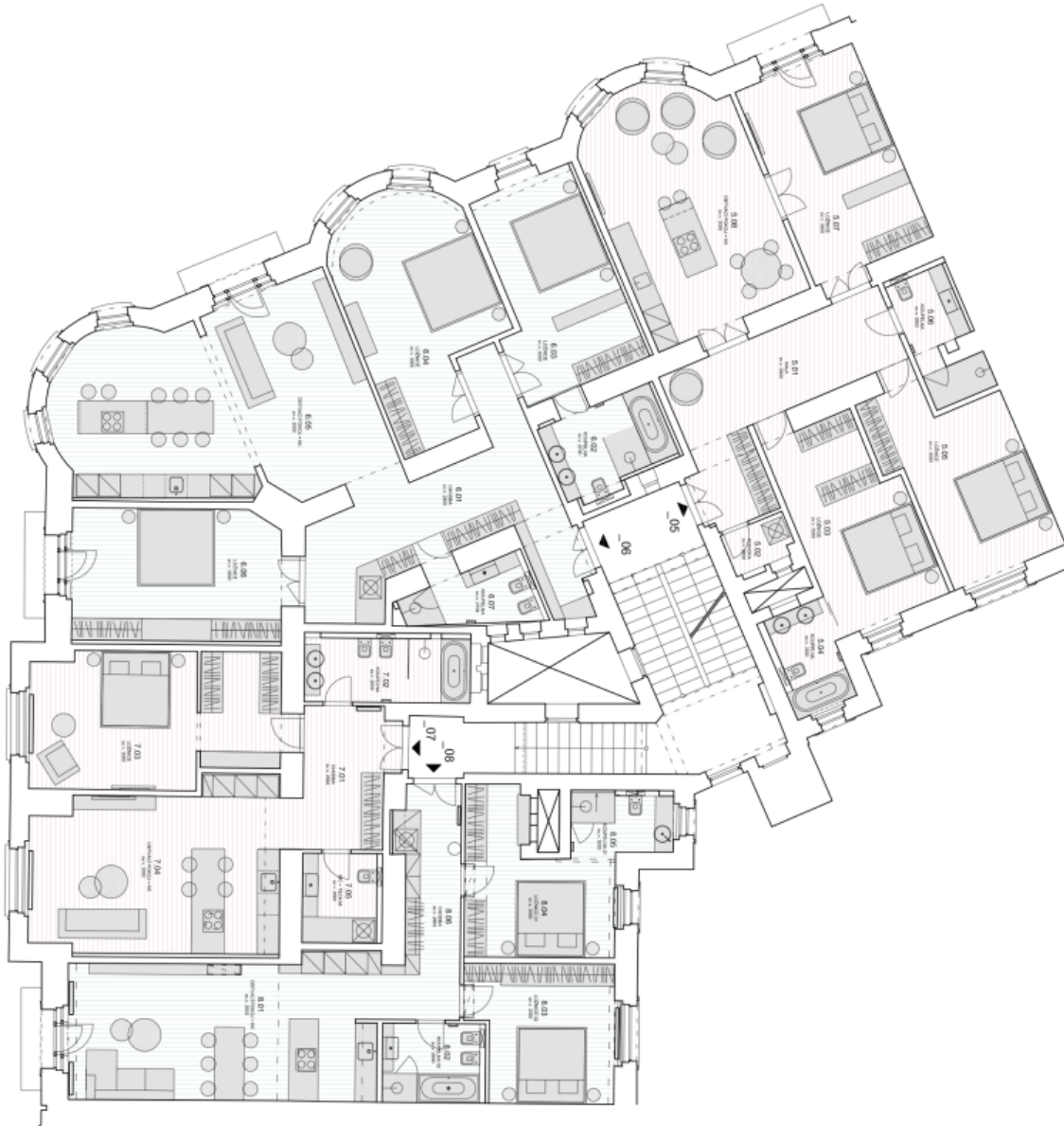
* Area of the unit according to the Civil Code. The area consists of the sum total area of the entire unit bounded by perimeter walls.



Apartment Three-bedroom (4+kk)

163 m², Praha 3, Vinohrady, Laubova

Rented



Byt 05_4+kk

Č.Ú.	MEŠTŮSTĚ	PLOCHA m ²
5.01	UHÁ	218
5.02	KOKOSKVA	24
5.03	LOŽNICE	201
5.04	KOUPÁLNA	54
5.05	LOŽNICE	209
5.06	KOUPÁLNA	64
5.07	LOŽNICE	210
5.08	LOŽNICE	245
CELKEM		1563

Byt 06_4+kk

Č.Ú.	MEŠTŮSTĚ	PLOCHA m ²
6.01	ČEKKA	277
6.02	KOUPÁLNA	91
6.03	LOŽNICE	209
6.04	LOŽNICE	202
6.05	LOŽNICE	201
6.06	LOŽNICE	244
6.07	LOŽNICE	64
CELKEM		1503

Byt 07_2+kk

Č.Ú.	MEŠTŮSTĚ	PLOCHA m ²
7.01	ČEKKA	127
7.02	KOUPÁLNA	91
7.03	LOŽNICE	283
7.04	LOŽNICE	283
7.05	LOŽNICE	54
7.06	LOŽNICE	54
CELKEM		692

Byt 08_3+kk

Č.Ú.	MEŠTŮSTĚ	PLOCHA m ²
8.01	LOŽNICE	98
8.02	LOŽNICE	98
8.03	LOŽNICE	142
8.04	LOŽNICE	142
8.05	LOŽNICE	54
8.06	LOŽNICE	117
CELKEM		650